

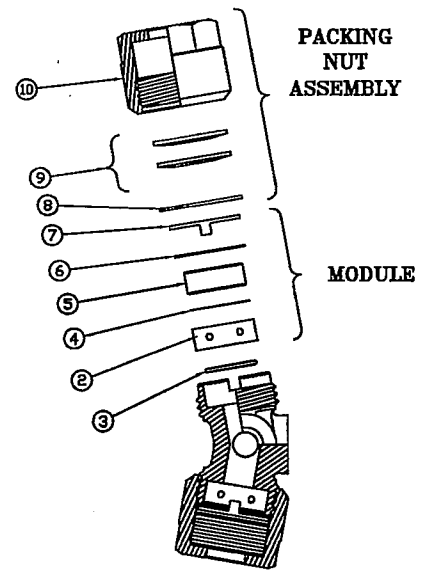
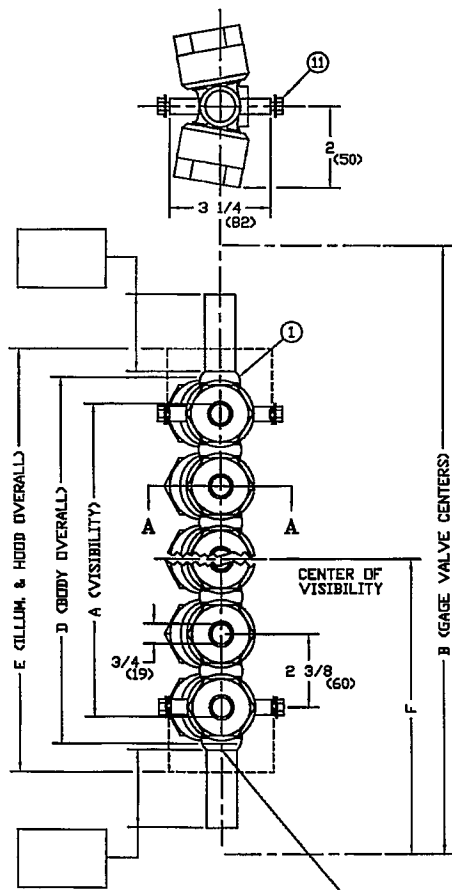
DIMENSION CHART -- STANDARD SIZES

SIMPLIPOINT PART NO.	NO. OF WINDOW UNITS	VISION A		MIN. WATER GAGE CENTERS FOR VALVE SERIES INDICATED				BODY D		E		F (MIN)			
				B		403RS 404RS		SG860 SG854				403RS 404RS		SG860 SG854	
		INCHES	MM	INCHES	MM	INCHES	MM	INCHES	MM	INCHES	MM	INCHES	MM	INCHES	MM
P4005	5	10 1/4 (260)	17 3/4 (450)	21 (533)	11 7/8 (301)	12 3/4 (323)	10 3/16 (258)	10 3/8 (263)							
P4006	6	12 5/8 (320)	20 1/8 (511)	23 3/8 (593)	14 1/4 (361)	15 1/8 (384)	11 3/8 (288)	11 9/16 (293)							
P4007	7	15 (381)	22 1/2 (571)	25 3/4 (654)	16 5/8 (422)	17 1/2 (444)	12 9/16 (319)	12 3/4 (323)							
P4008	8	17 3/8 (441)	24 7/8 (631)	28 1/8 (714)	19 (482)	19 7/8 (504)	13 3/4 (349)	13 15/16 (354)							
P4009	9	19 3/4 (501)	27 1/4 (692)	30 1/2 (774)	21 3/8 (542)	22 1/4 (565)	15 1/16 (382)	15 1/4 (387)							
P4010	10	22 1/8 (561)	29 5/8 (752)	32 7/8 (835)	23 3/4 (603)	24 5/8 (625)	16 1/8 (409)	16 5/16 (414)							

TO BE SPECIFIED BY CUSTOMER		
SIMPLIPOINT PART NO.	B	F
ILLUMINATOR PART NO.	HOOD PART NO.	

BILL OF MATERIAL					
ITEM	PART NO.	QTY	DESCRIPTION	MATERIAL	DWG. NO.
1	P40**	1	BODY-WELDED ASSEMBLY	STN. STL.	B-14312
2	PW-84	2	MODULE CUP	STN. STL.	PS7289-A
3	PW-90	2	SEALING GASKET	MONEL	PS7290-A
4	PW-89	2	MICA SHIELD	MICA	PS7289-A
5	PW-18	2	GAGE GLASS	GLASS	A-10419
6	PW-63	2	CUSHION GASKET	COPPER	PS7154-A
7	PW-64	2	LUG WASHER	STN. STL.	PS7155-A
8	PW-40	2	SPRING RETAINER	STN. STL.	PS7003-A
9	PW-66	4	SPRING WASHER	STN. STL.	
10	PW-65	2	PACKING NUT	STEEL	PS7156-A
11	X172125	4	HEX-WASHER HD. SCR. 5/16-18 x 1/2	STN. STL.	

- NOTES:
- * TO COMPLETE PART NO. ADD NO. OF WINDOW UNITS
 - ITEMS 2 THRU 10 FORM ONE COMPLETE ASSEMBLY OF SINGLE WINDOW UNIT
 - ITEMS 2 THRU 7 COMPRISE A REPLACEMENT PACKAGE INCLUDING THE MODULE, TO BE ORDERED AS PART NO. PW-873 (SEE EXPLODED VIEW)
 - ITEMS 8 THRU 10 COMPRISE A PACKING NUT ASSEMBLY, TO BE ORDERED AS PART NO. PW-68 (SEE EXPLODED VIEW)
 - ASSEMBLY OF ILLUMINATOR & HOOD ON GAGE REF. DWG. AB-14916



SECTION A-A
EXPLODED VIEW OF SINGLE WINDOW UNIT

FIGURE A

SCREWED FOR 0-900 WSP
WELDED FOR 901-1500 WSP

FOR NIPPLE CONNECTION (1500 PSI MAX)
(10345 KPa MAXIMUM)

DESIGN TEMPERATURE: 595°F.
312.8° C.

ITEM	PART NO.	DWG. NO.
SIMPLIPOINT ILLUMINATORS:		
STANDARD	PI*	B-9131
WEATHERPROOF	PIW*	B-9133
EXPLOSION-PROOF	PIWEP*	B-10034
SIMPLIPOINT HOODS:		
OPEN-END WEATHERPROOF	PHOW*	1-15-62
DIRECT-VISION WEATHERPROOF	PHOW*	B-10547
PERISCOPE-WEATHERPROOF	PHPW*	B-9133
PERISCOPE-WEATHERPROOF WITH SOCKET DUCT	PHPWS*	B-9134
PERISCOPE-WEATHERPROOF WITH FLANGED DUCT	PHPWF*	B-9134

DIMENSIONS IN INCHES
DIMENSIONS IN () MILLIMETERS

PATENT NO. 3,187,573
HYDROTEST AT 2250 PSI
(15518 KPa)

REV	DESCRIPTION REVISIONS	DATE	SIG

UNLESS OTHERWISE NOTED:
TOLERANCES (G)
DECIMAL & STOCK (.002)
FIN. FRACTIONAL (UP TO 1", NOT INCL.) (.010)
FIN. FRACTIONAL (1" INCL., UP TO 3") 1/64
FIN. FRACTIONAL (3" INCL., UP TO 6") 1/32
FIN. FRACTIONAL (6" INCL., UP TO 12") 1/16
FIN. FRACTIONAL (12" & OVER) 1/8
ANGLES 1'
MACHINE FINISH- 125√ DR SMOOTHER
REMOVE BURRS AND SHARP EDGES

CLARK-RELIANCE CORP.
STRONGSVILLE, OHIO, U.S.A.

SIMPLIPOINT 4000 SERIES GAGE ASS'Y
0-1500 WSP

MATERIAL	
SEE INDIVIDUAL PART DRAWINGS	
DRAWN H.J.G.	SCALE NONE
CHKD. SA	DATE 10/22/07
DRAWING NO.	REV.
PS1483-A	