

# Maxon Model “400” OVENPAK® Gas Burners



Model 415 OVENPAK® Burner  
with connecting base and linkage  
assembly to adapt customer's automatic  
electric control motor

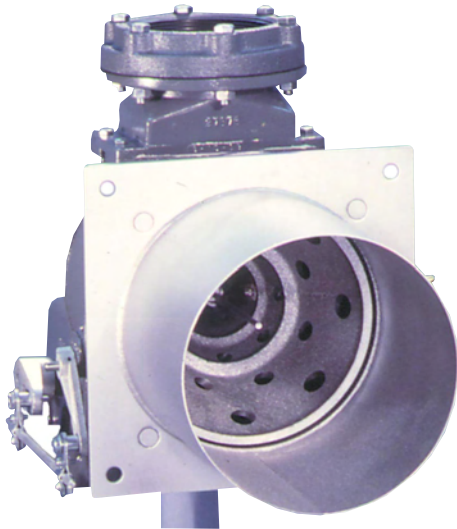
- Burns any clean fuel gas
- Fires into passing air streams
- Requires only low pressure gas
- Provides clean combustion with low NOx levels
- Compact burner design provides quick and easy installation
- Simple field adjustment and maintenance

## Model “400” OVENPAK® Burner applications have included:

Air heating in ovens and dryers, paint finishing lines, paper and textile machines, food baking ovens, coffee roasters, grain dryers, and fume incinerators. Manufactured under U.S. patent #3,574,508; Canadian and European patents granted and pending.



# Maxon Model "400" OVENPAK® Gas Burners

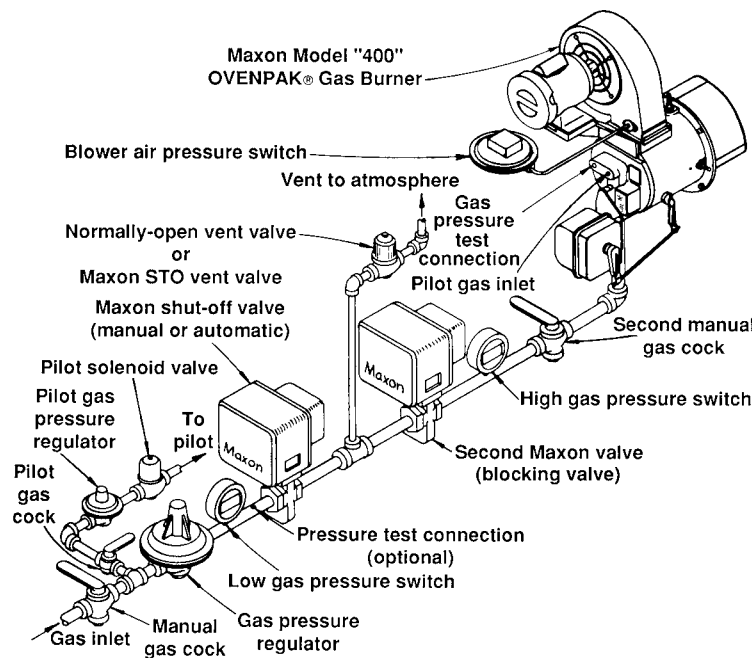


Model EB-3 OVENPAK® Burner with connecting base and linkage assembly

*Provide application flexibility with:*

- 40:1 turndown or more
- Over 90 different styles and sizes
- Heat releases to 16,500,000 Btu/hr
- Cost-effective external blower (EB) version

## Typical piping layout with "Block and Bleed" gas train arrangement



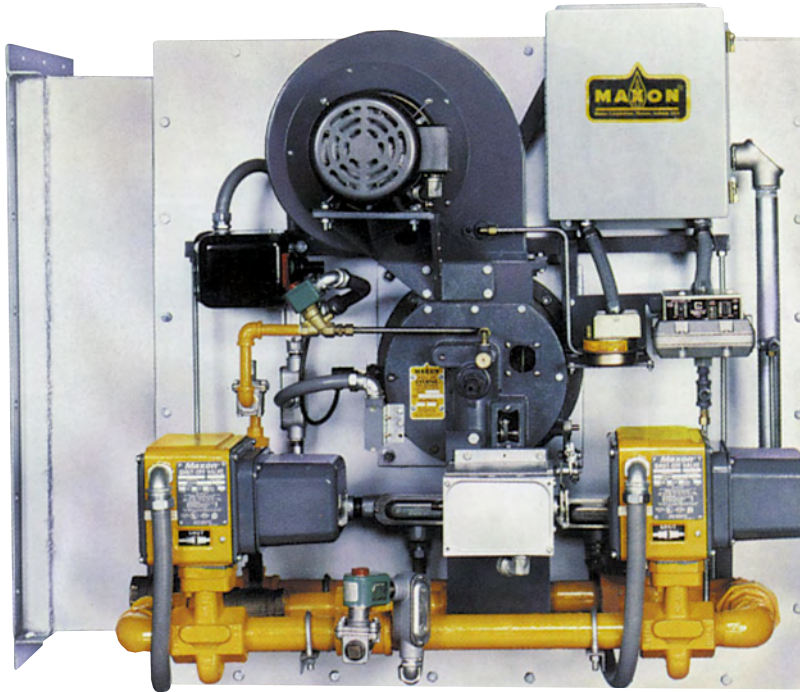
# Maxon Pre-Assembled Package Model “400” OVENPAK® Gas Burner System



Model 435  
OVENPAK®  
Burner with pre-  
assembled “Block  
& Bleed” pipe  
train and pre-  
wired into  
package system

- A complete “packaged burner” system for maximum efficiency
- Pre-assembled system includes:
  - High turndown Model “400” OVENPAK® Burner
  - Completely assembled and pre-wired pipe train package
- Fast and easy installation with your choice of mounting options:
  - Arranged for mounting onto your existing duct;
  - Or mounted by Maxon in a pre-fabricated combustion heater/duct

# Maxon Packaged Heater/Duct Sections for Pre-Assembled OVENPAK® Gas Burner Systems



Model 425  
OVENPAK® Burner  
pre-assembled  
package system,  
installed and mounted  
onto a Maxon pre-  
fabricated heater/duct  
section

- Reduce your fabrication time and costly design details
- Easy mounting provided by flanged duct connection joints
- Application flexibility offered by:
  - Three duct sizes
  - Five capacity options
  - Optional return/inlet duct opening positions
- Discharge air volumes up to 12,000 SCFM
- Handles discharge air temperatures up to 600°F (316°C)

