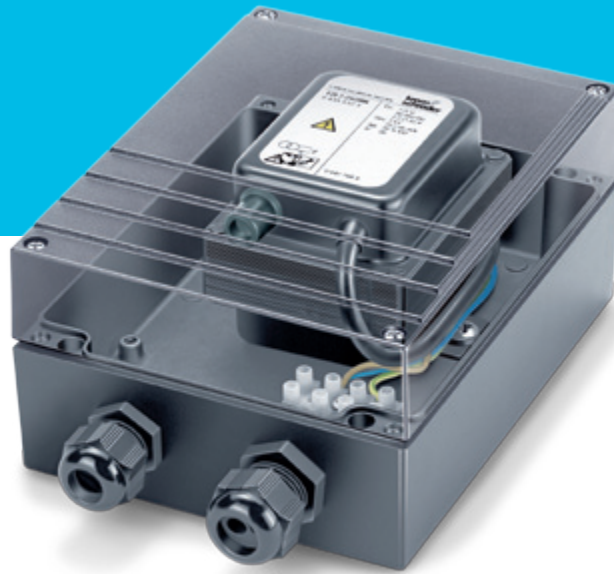


Ignition transformers TZI, TGI

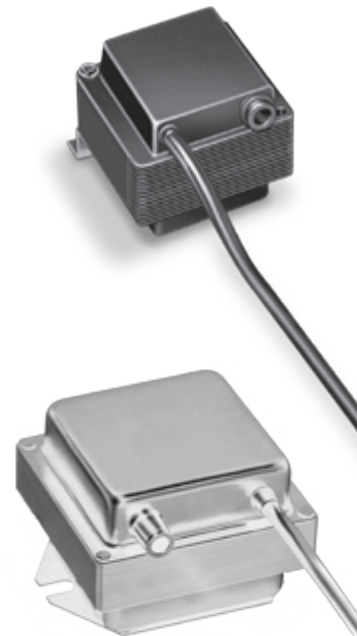
Product brochure - GB
8.1.1 Edition 02.11

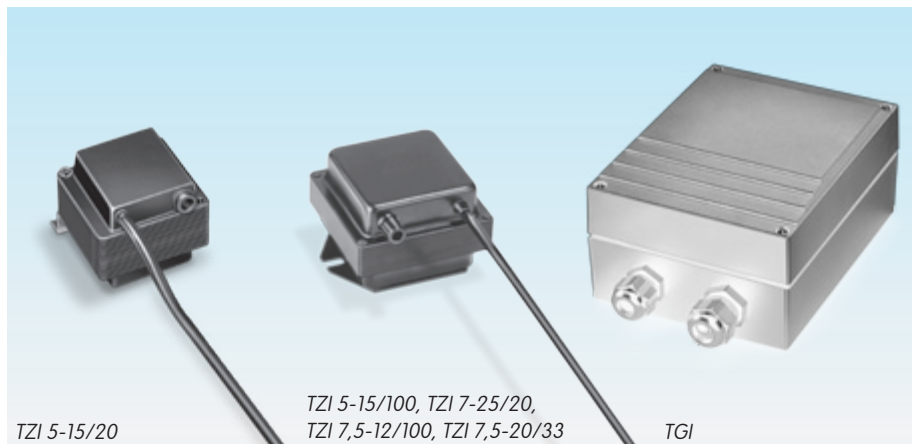


**krom
schroder**



- Electrical ignition of gas burners
- Ignition and burner control with a single electrode possible
- For installation in a control cabinet or wall mounting
- Complying with EN 61558-2-3
- TZI 7,5-20/33R complies with CSA



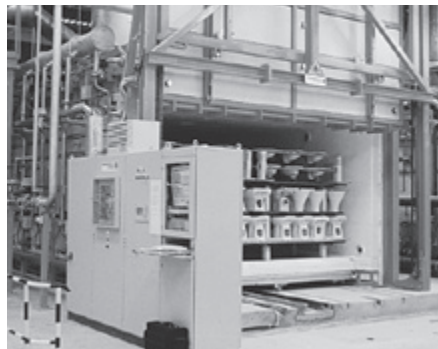


Application

Ignition transformers TZI and TGI are designed for high-voltage spark ignition of gas burners and gas-ignited or directly ignited oil burners. The ignition transformers can also be used on burners with single-electrode operation; the ignition current and ionization current flow over a common electrode. Ignition transformer TZI fulfils the requirements for enclosure IP 20. It is suitable for installation in a control cabinet. Ignition transformer TGI in its die-cast aluminium housing meets the requirements for enclosure IP 65. It is suitable for on-site mounting near to the burner.



Bogie hearth forging furnace in the metallurgical industry

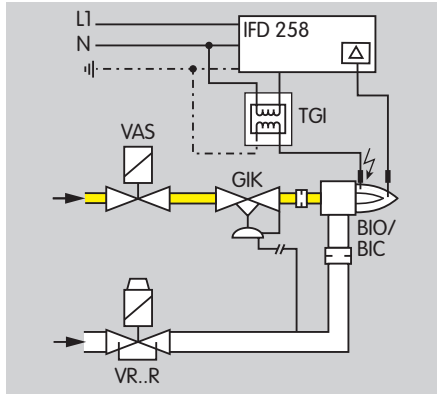


Intermittent shuttle kiln in the ceramics industry



Walking beam furnace with overhead firing

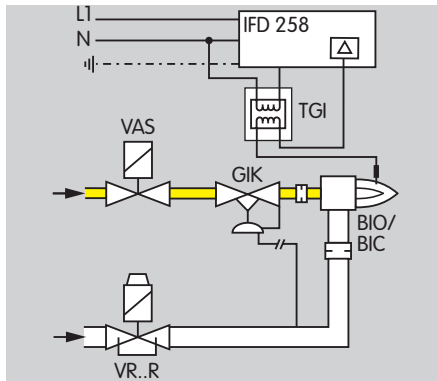
Examples of application



Double-electrode operation

Ignition using ignition electrode

Ignition transformer TGI is supplied with voltage via the automatic burner control unit IFD 258. The ignition transformer generates a high voltage. This high voltage creates ignition sparks between the ignition electrode and burner ground. After the burner start, a current flows via the ionization electrode for flame control.



Single-electrode operation

Ignition using an ignition and ionization electrode

After burner start, a flame control current flows via the same electrode that is also used for ignition.

Type code

Code	Description
TZI	Ignition transformer
TGI	Ignition transformer, enclosed
5	High voltage: 5 kV
7	7 kV
7,5	7.5 kV
-12	Output current: 12 mA at 50 Hz (9 mA at 60 Hz)
-15	15 mA at 50 Hz (11 mA at 60 Hz)
-20	20 mA at 50 Hz (15 mA at 60 Hz)
-25	25 mA at 50 Hz (18 mA at 60 Hz)
/20	Duty cycle: 20%
/33	33%
/100	100%
R	Mains voltage: 115 V
W	230 V

Technical data

Type	Input			Output			Duty cycle**	Enclosure	Weight kg
	V AC	Hz*	A*	V	mA*				
TZI 5-15/20W	230	50 (60)	0.5 (0.35)	5000	15 (11)		20	IP 20	0.9
TZI 5-15/100W	230	50 (60)	0.45 (0.35)	5000	15 (11)		100	IP 20	1.5
TZI 7-25/20W	230	50 (60)	1.1 (0.8)	7000	25 (18)		20	IP 20	1.5
TZI 7,5-12/100W	230	50 (60)	0.6 (0.45)	7500	12 (9)		100	IP 20	2
TZI 7,5-20/33W	230	50 (60)	0.9 (0.7)	7500	20 (15)		33	IP 20	2
TZI 5-15/20R	115	50 (60)	1 (0.7)	5000	15 (11)		20	IP 20	0.9
TZI 5-15/100R	115	50 (60)	0.9 (0.7)	5000	15 (11)		100	IP 20	1.5
TZI 7-25/20R	115	50 (60)	2.2 (1.6)	7000	25 (18)		20	IP 20	1.5
TZI 7,5-12/100R	115	50 (60)	1.2 (0.9)	7500	12 (9)		100	IP 20	2
TZI 7,5-20/33R	115	50 (60)	1.8 (1.35)	7500	20 (15)		33	IP 20	2
TGI 5-15/100W	230	50 (60)	0.45 (0.35)	5000	15 (11)		100	IP 65	3
TGI 7-25/20W	230	50 (60)	1.1 (0.8)	7000	25 (18)		20	IP 65	3
TGI 7,5-12/100W	230	50 (60)	0.6 (0.45)	7500	12 (9)		100	IP 65	3.5
TGI 7,5-20/33W	230	50 (60)	0.9 (0.7)	7500	20 (15)		33	IP 65	3.5
TGI 5-15/100R	115	50 (60)	0.9 (0.7)	5000	15 (11)		100	IP 65	3
TGI 7-25/20R	115	50 (60)	2.2 (1.6)	7000	25 (18)		20	IP 65	3
TGI 7,5-12/100R	115	50 (60)	1.2 (0.9)	7500	12 (9)		100	IP 65	3.5
TGI 7,5-20/33R	115	50 (60)	1.8 (1.35)	7500	20 (15)		33	IP 65	3.5

* Values in brackets apply to 60 Hz.

** For temperatures between -20 and +35°C.

Ambient temperature: -20 to +60°C.

Detailed information on this product

www.docuthek.com → Elster Kromschroeder

Search term: TZI, TGI

Kind of document: Technical information

Contact

www.kromschroeder.com → Sales

Elster GmbH
Postfach 2809 · 49018 Osnabrück
Strothweg 1 · 49504 Lotte (Büren)
Germany

T +49 541 1214-0
F +49 541 1214-370
info@kromschroeder.com
www.kromschroeder.com
www.elster.com

We reserve the right to make technical modifications in the interests of progress.

Copyright © 2007 – 2010 Elster Group
All rights reserved.

Combustion 911 is a proud supplier of Kromschroder Combustion Equipment and Spare Parts



www.combustion911.com



Shop Online



330-474-3900



Email



Twitter



Facebook



Google+



RSS



Blog

Email: support_ab@combustion911.com

Twitter: <https://twitter.com/#!/Combustion911>

Facebook: <http://www.facebook.com/pages/Combustion-911/320289271379136>

Google+: <https://plus.google.com/110266422260361160782/posts>

RSS: <http://www.combustion911.com/blog/feed>

Blog: <http://www.combustion911.com/blog>

Online Shopping Cart: <http://www.combustion911.com/cart>