

# Honeywell

**Process Instrument Explorer (P.I.E.)**

**Application Notes**

**Revision 1.4**





# P.I.E. Application Notes

## Table of Contents

1. Pocket PC (PPC) – Start up with Infrared .....	3
2. NGC Multiple Unit Configuration (IR) .....	8
3. How to transfer a configuration from PC to Pocket PC.....	9
4. How to transfer a configuration from Pocket PC to PC.....	14



# P.I.E. Application Notes

## 1. Pocket PC (PPC) – Start up with Infrared

PIE Configuration Tool is compatible with PPCs using Intel xScale Processor and containing at least 32mb of memory. The following PPCs have been verified for compatibility prior to the initial release:

Dell X5, X3, X30, X50, X51

HP iPAQ rz1710, h1910, h1940, 2200, 2210, hx2100, hx2400, hx2410, hx2700, hx2750, 3830, 3835, 4100, 4150, 5150, 5450, 5550, 5555, Symbol PPT2800

**Step 1.** Follow the PPC installation instructions that come with the purchased unit. The user will need to install PPC synchronization software (ActiveSync for MS-XP or Windows Mobile Device Center for MS-Vista or MS-Windows 7) and a sync cable and/or caddy.

**Step 2.** Once the PPC has been successfully setup with the desktop a New Partnership dialog box will appear each time the PPC is attached to the sync cable. The “Guest Partnership” option should be selected and the “Next” button pressed.

**Step 3.** The Microsoft Activesync (MS-XP) or Windows Mobile Device Center (MS-Vista or MS-Windows 7) dialog box will then appear and must show a status of “connected” in order to install the NGC Configuration Software onto the PPC. (Unit must be turned on)

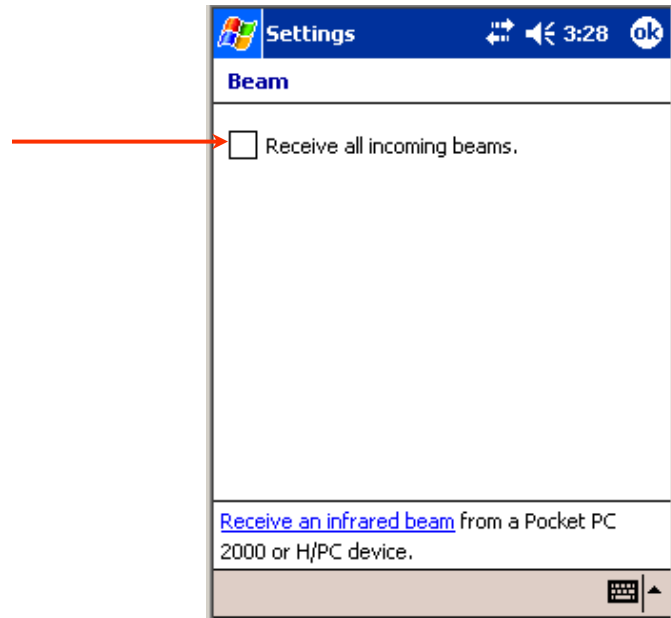
**Step 4.** Run the NGC Configuration Software setup program. Follow the installation instructions to install the application onto the PPC.



# P.I.E. Application Notes

**Step 5.** Once the installation process is complete, verify that the beam settings checkbox in the PPC system software is UNCHECKED.

(This setting is located through: Start\Settings\Connections\Beam)

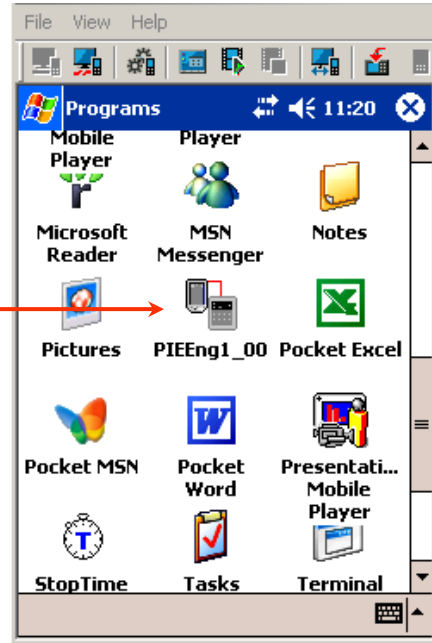


*Note: IR communications will not work with the NGC application if this box is checked*

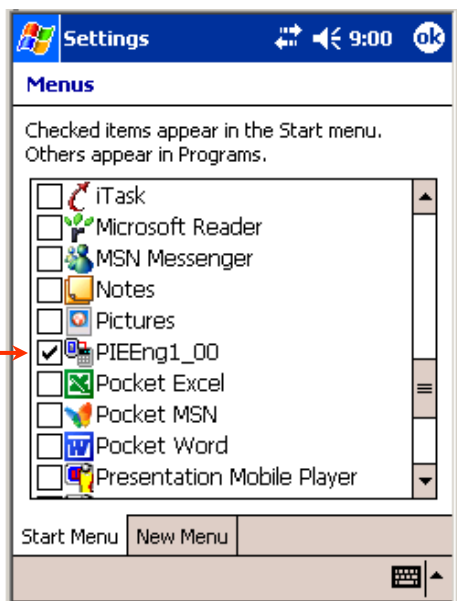


# P.I.E. Application Notes

**Step 6.** Start the PIE application from either the Start Menu or the programs group. In earlier versions of PPC OS software (i.e. Microsoft 2002), the PIE shortcut will be automatically added to the Start Menu. In later versions of PPC OS software (i.e. Microsoft 2003), the PIE shortcut will be automatically added to the Start Menu if there are no more than (9) programs listed on the menu. If there are more than (9) programs listed on the shortcut menu the PIE shortcut is automatically added as an icon to the program group.



*Note: The user can move the shortcut to the Start Menu by selecting the PIE menu checkbox at: Start\Settings\Menus*

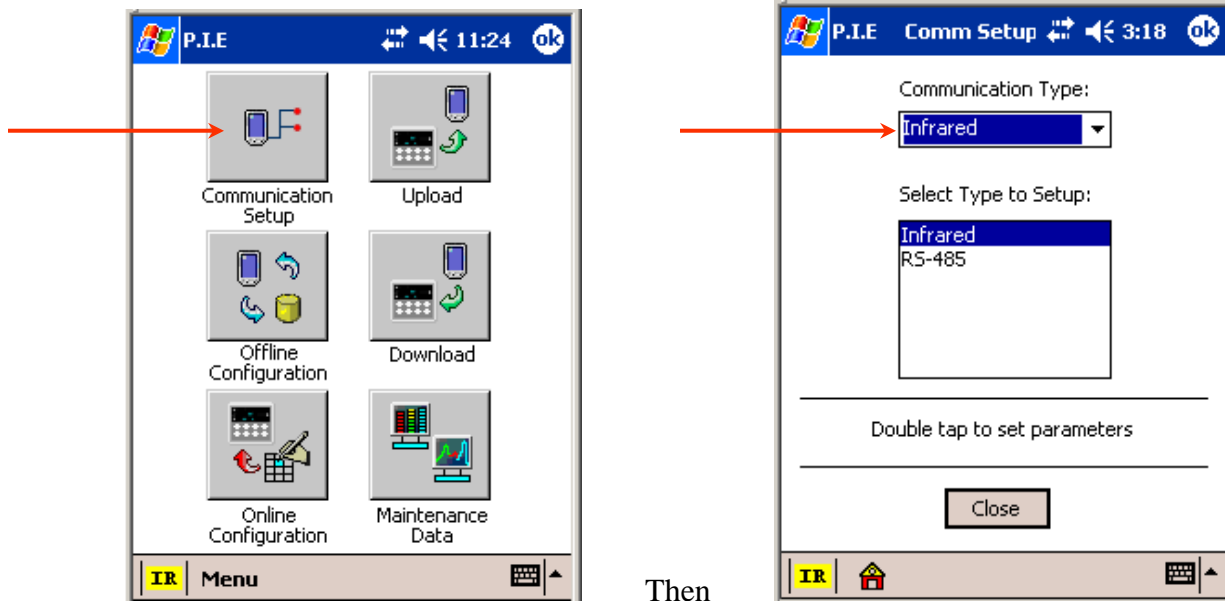


- If the box is checked the shortcut will be located on the Start Menu.
- If the box is unchecked the shortcut will be located in the Programs Group.

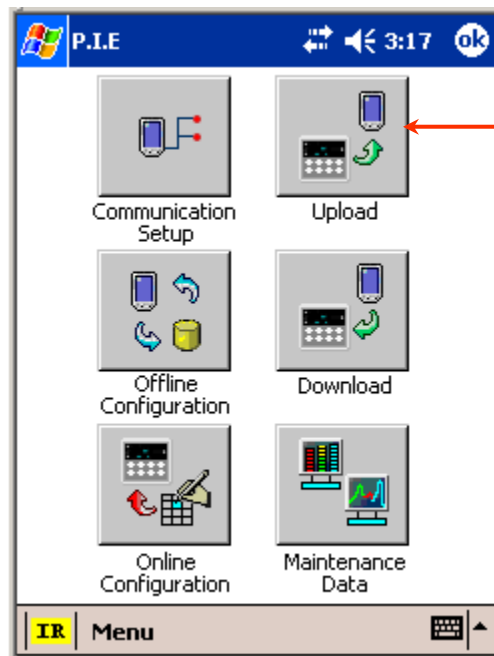


# P.I.E. Application Notes

**Step 7.** Start the PIE application via the PIE shortcut (Start Menu or Program Group) and set the communications mode to IR using the PC/PPC Tool instruction manual.



**Step 8.** Press a key on the controller, point the IR port directly at the controller and perform an Upload function. See the PC/PPC Tool instruction manual for more details.





# P.I.E. Application Notes

## Additional Notes

- The IR port is optional on the UC2500 units.
- IR Comm. must be enabled through the Communication Group in the controller before the port in the controller can be activated.
- The IR port on the controller will be activated for (4) minutes since the last keypad button press or last IR communications transaction.
- Multiple controllers can receive IR signals as long as they are uniquely addressed. (The controllers will ignore commands addressed to another controller)

## If a communication failure is encountered check the following:

- The unit is configured with an IR port (UDC2500 IR is optional; Non IR units can be configured using the test jack port)
- The beam checkbox in the PPC must be UNCHECKED.
- A valid IR port address has been assigned through the Infrared Communications Setup screen. Some PPCs must be manually set (ie HP iPAQ h1940, rz1710).
- The controller IR port must be enabled through the controller communications menu.
- The device address set in the controller communications menu must match the device address in the PPC tool.
- There are no other PPC applications running that use the IR port.
- There is only one controller with the device address selected in the PPC tool.
- The communications mode in the PIE application must be set to IR. (Verify by looking at mode displayed in lower left corner of PPC display)
- The PPC has plenty of power. (A low battery can cause communication problems)
- The PPC is located ~ 6-12" away from the controller.
- They're no obstructions between the PPC and controller.
- PPC IR port must be pointed directly at UDC IR port.
- Note that each PPC may have the IR port located in a different location. (i.e. **Dell – front, iPAQ – left rear corner**)
- A button must be pressed on the controller to enable the IR port.
- The IR port is enabled for (4) minutes after a button is pressed on the controller keypad.
- Dell X5 PPCs require a patch from the Dell website.
- Dell X3 PPCs may require a patch from the Dell website.



# P.I.E. Application Notes

## 2. NGC Multiple Unit Configuration (IR)

This note describes the process for configuring multiple UDC's on a panel using IR communications. If not done properly there may be communication failures as multiple controllers receive the IR command and respond at the same time.

**Step 1.** Power-up all the controllers on the panel together and wait 5 seconds.

*Do not press any buttons on the controller keypads until instructed.*

**Step 2.** Based on the number of controllers, determine the maximum unique address that will be needed.

*Note that the factory default address for all the controllers is 3.*

Example: if there were 5 controllers on the panel, the maximum unique address would be 7.

**Step 3.** Press a button on the first controller to be configured.

**Step 4.** Set the IR device address in the PPC to 3.

**Step 5.** Use the Online Configuration function to set the device address in the first controller to 7.

**Step 6.** Press a button on the next controller to be configured.

**Step 7.** Set the IR device address in the PPC to 3.

**Step 8.** Use the Online Configuration function to set the device address in the next controller to the last assigned unique device address minus less one. (i.e. 7, 6, 5, 4)

**Step 9.** Continue to implement steps 6-8 until only one controller remains unconfigured. The last unit will continue to use the default address of 3.





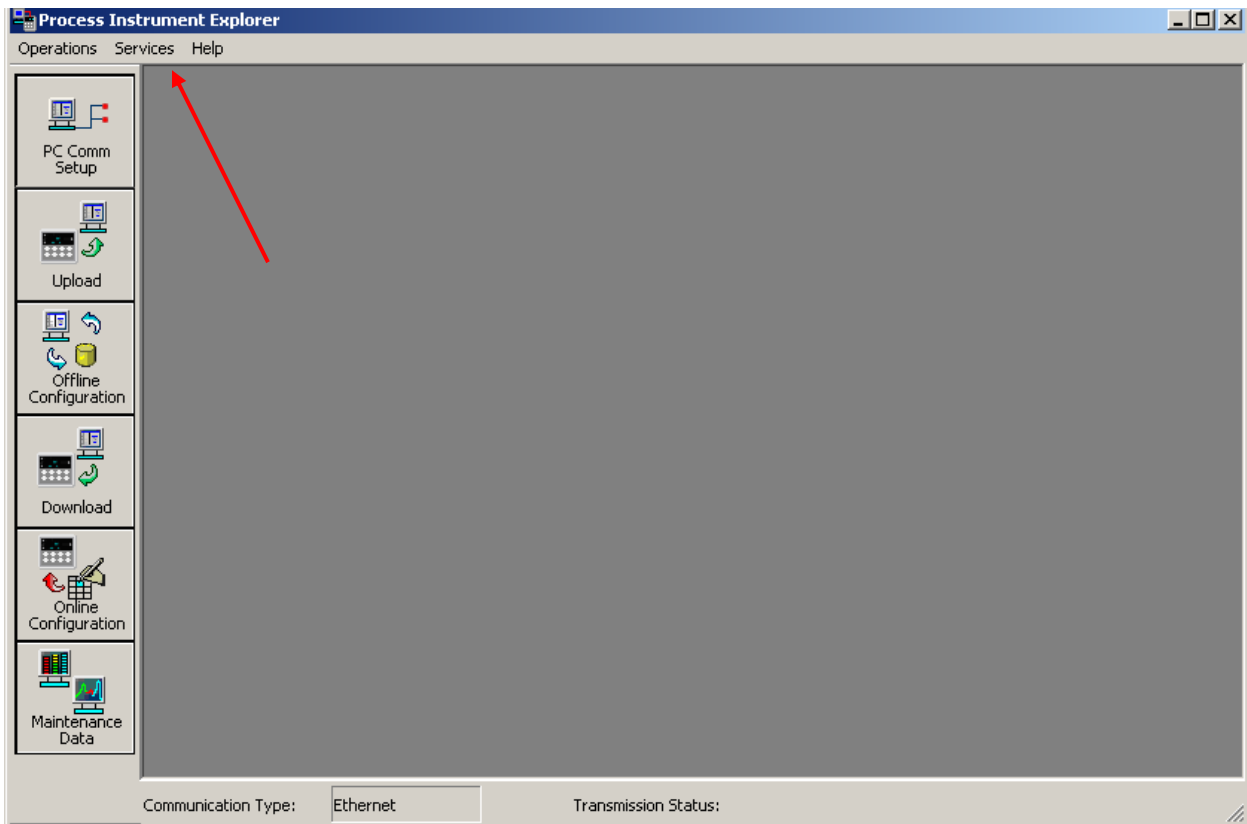
# P.I.E. Application Notes

## 3. How to transfer a configuration from PC to Pocket PC

**Step 1.** Start the PIE application on your PC.

*Note: You must have your Pocket PC connected to the PC and successfully connected to the Microsoft ActiveSync (MS-XP) or Windows Mobile Device Center (MS-Vista or MS-Windows 7) application.*

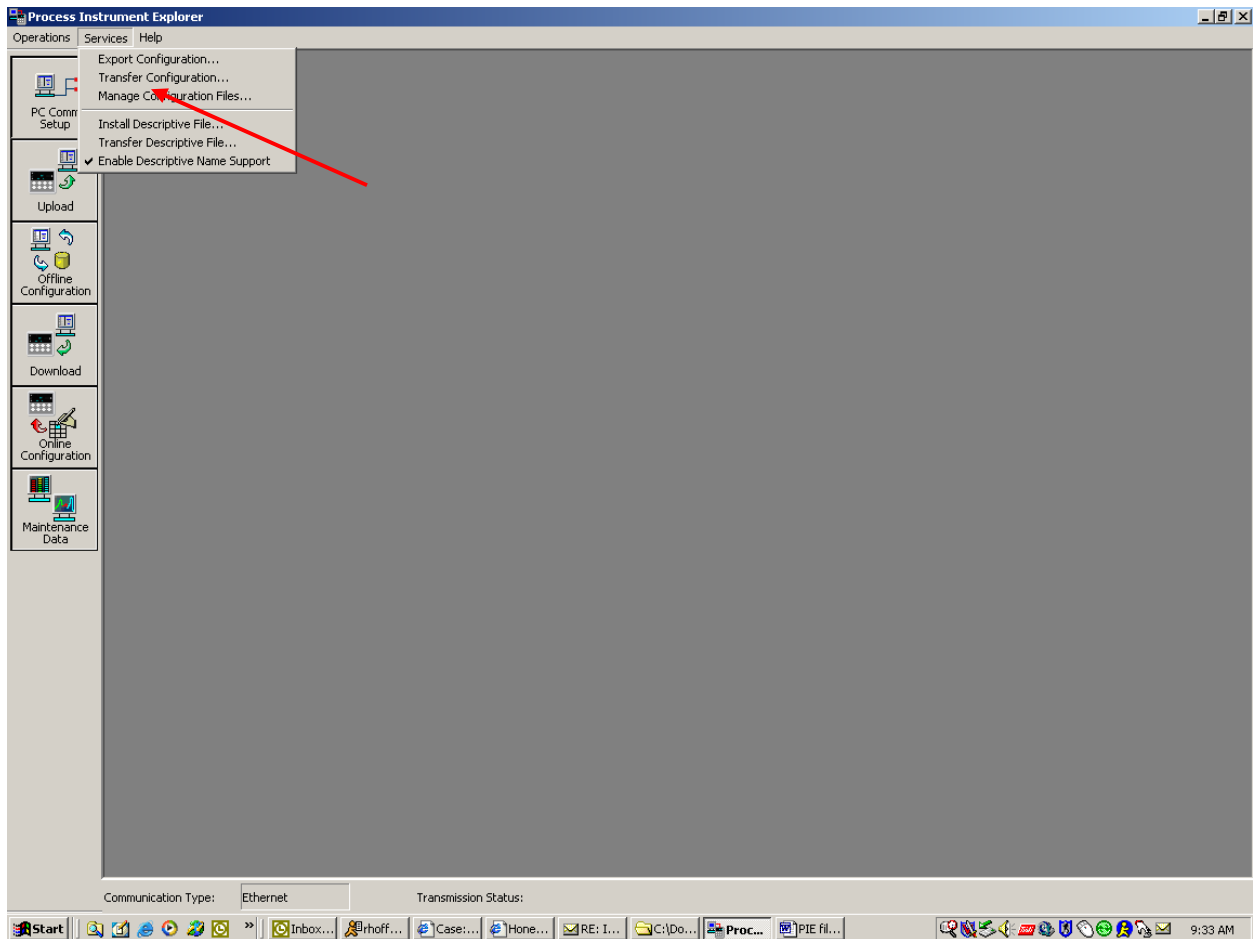
**Step 2.** Select **Services** from the Top menu.





# P.I.E. Application Notes

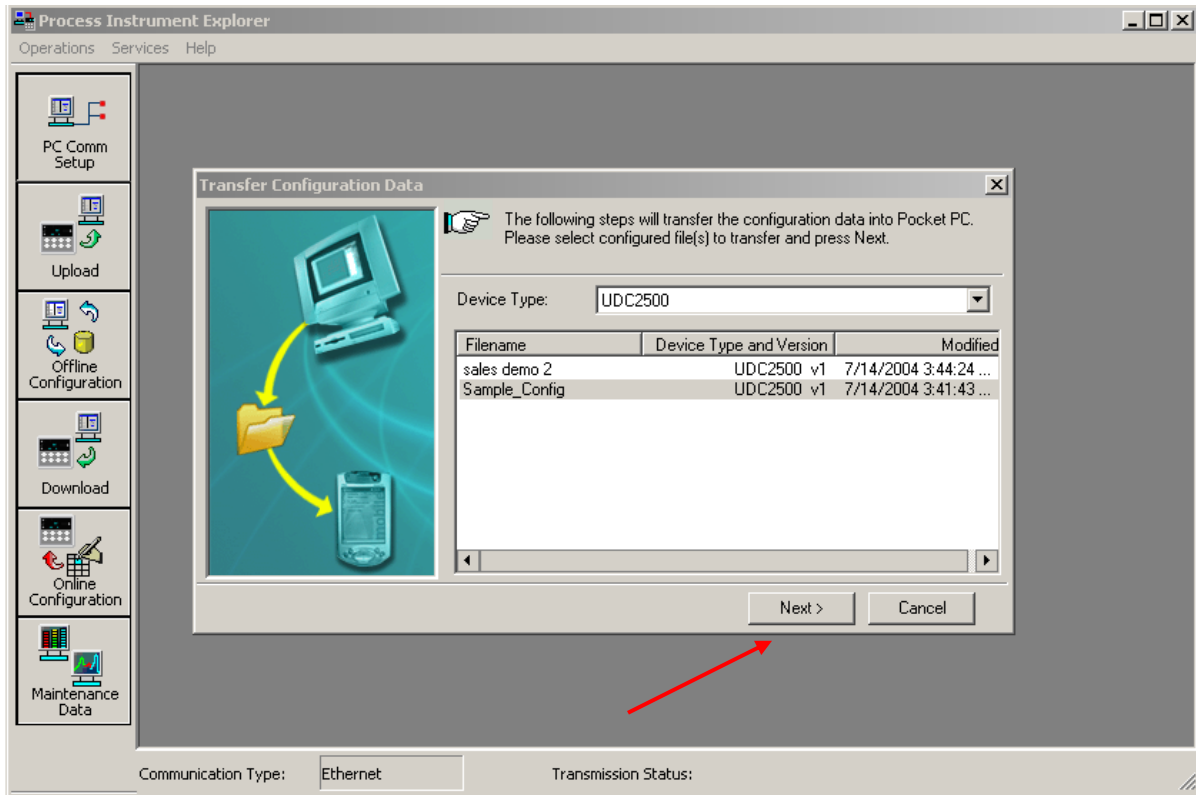
## Step 3. Select **Transfer Configuration**.





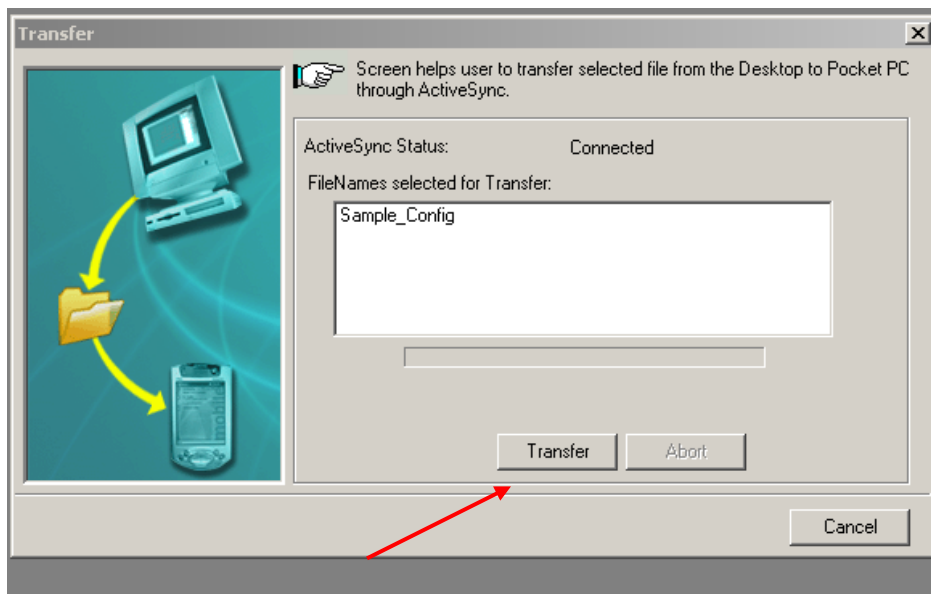
# P.I.E. Application Notes

**Step 4.** Select file to download to Pocket PC. (Example –Sample\_Config)



**Step 5.** Select **Next** to proceed.

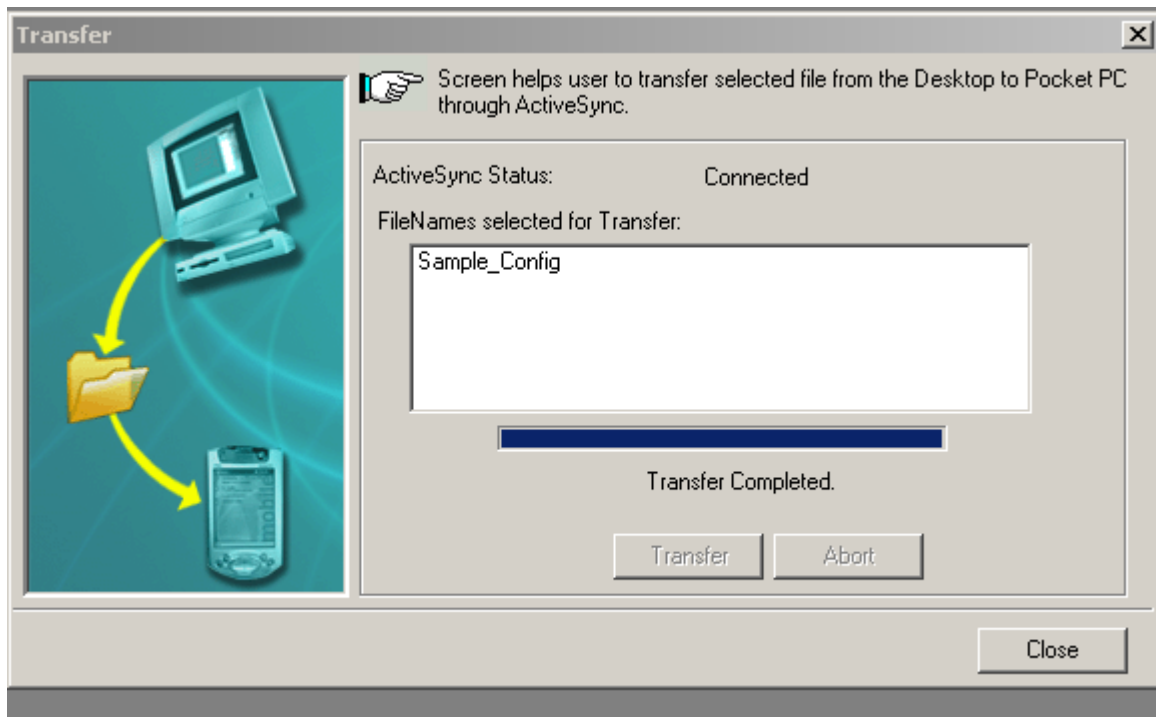
**Step 6.** Select **Transfer**.



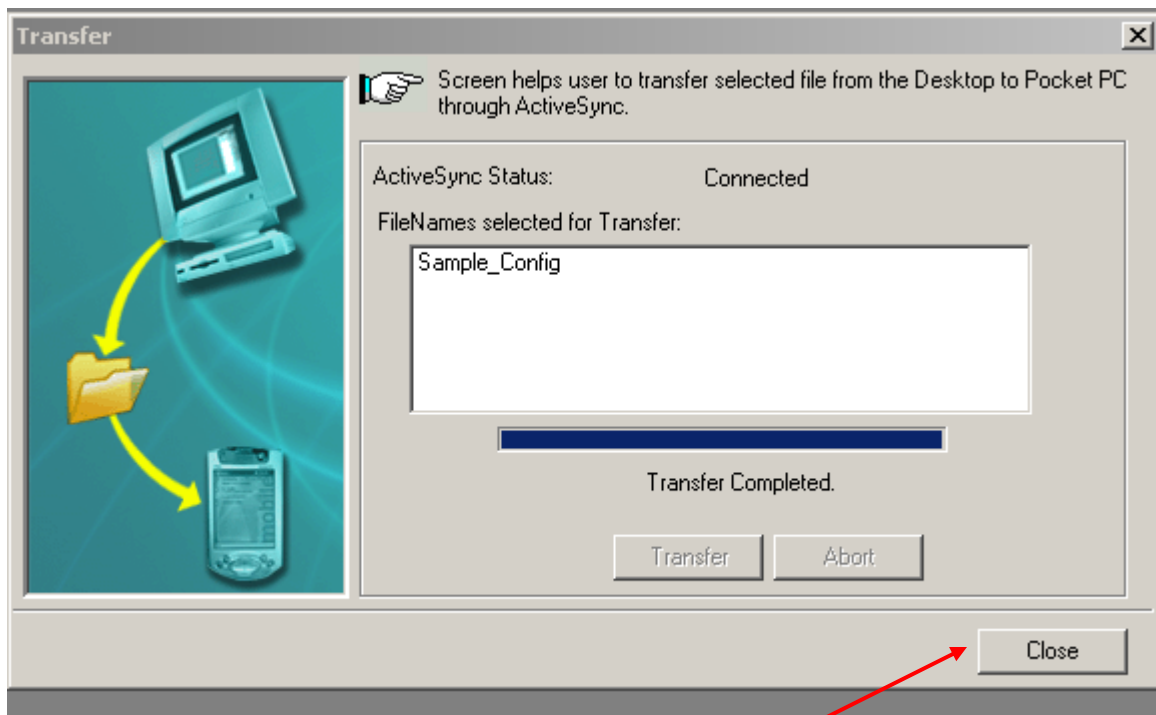


# P.I.E. Application Notes

**Step 7.** Once the transfer is completed, the screen will display “Transfer Completed.”



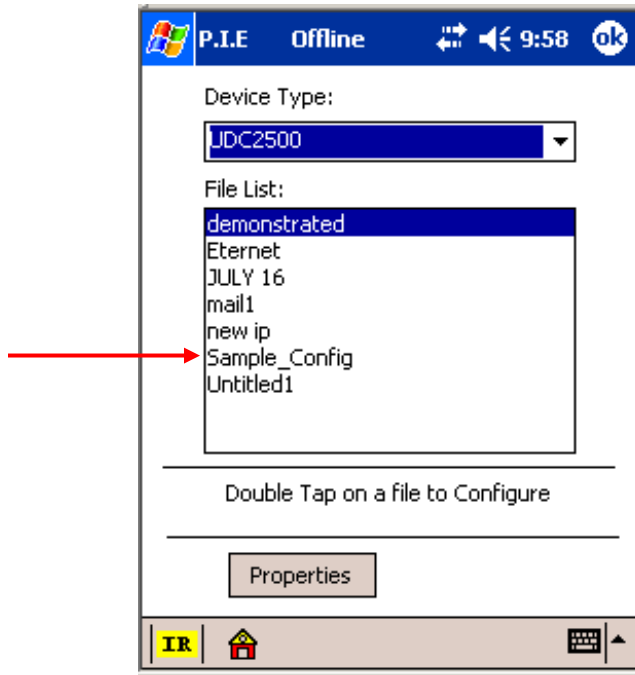
**Step 8.** Press **Close** to exit.





# P.I.E. Application Notes

**Step 9.** Configuration file is now available in PPC.



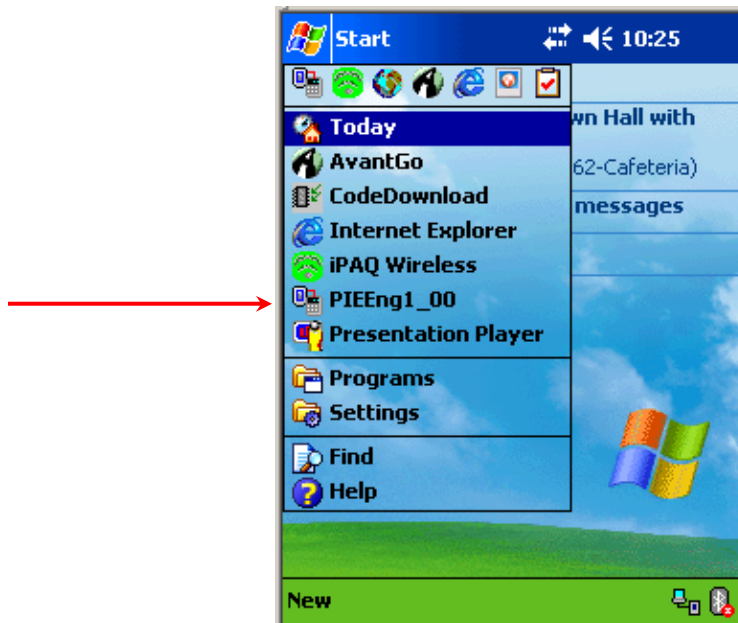


# P.I.E. Application Notes

## 4. How to transfer a configuration from Pocket PC to PC

**Step 1.** Press the Start icon on your Pocket PC and run the PIE application.

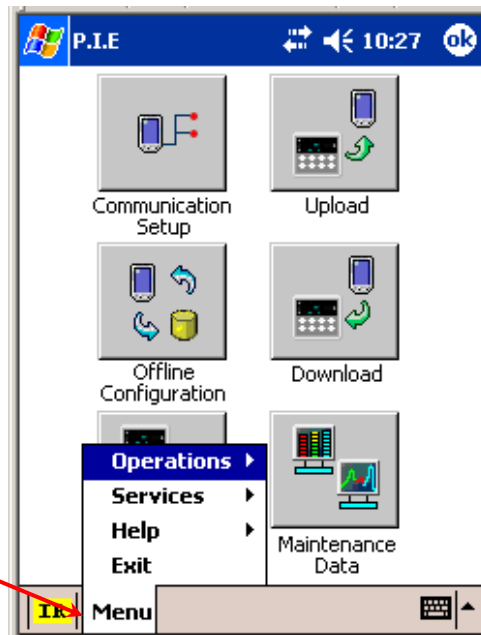
*Note: You must have your Pocket PC connected to the PC and successfully connected to the Microsoft ActiveSync (MS-XP) or Windows Mobile Device Center (MS-Vista or MS-Windows 7) application.*



**Step 2.** Select **Menu**.



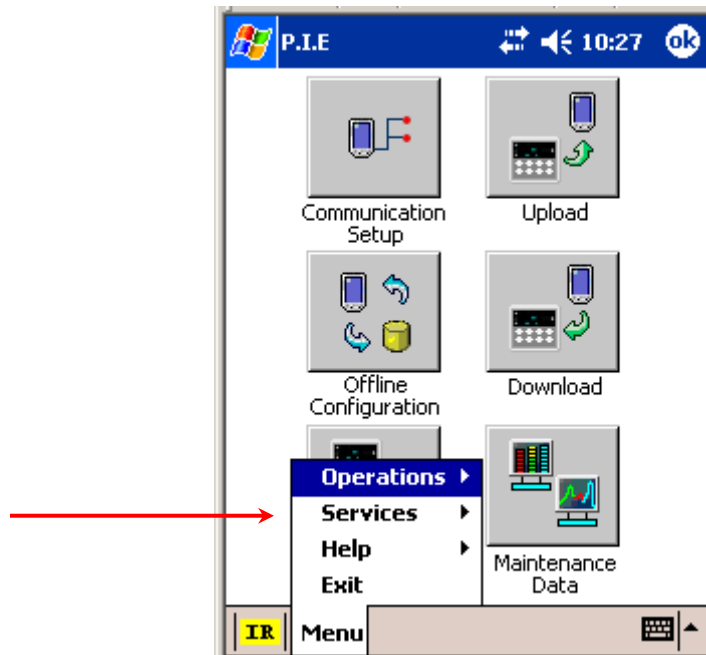
# P.I.E. Application Notes



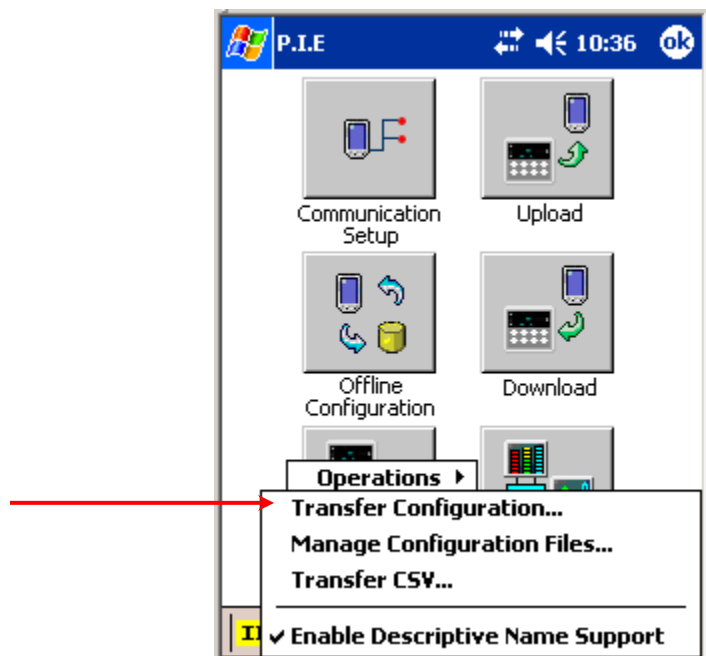


# P.I.E. Application Notes

**Step 3.** Select **Services**.



**Step 4.** Select **Transfer Configuration**.

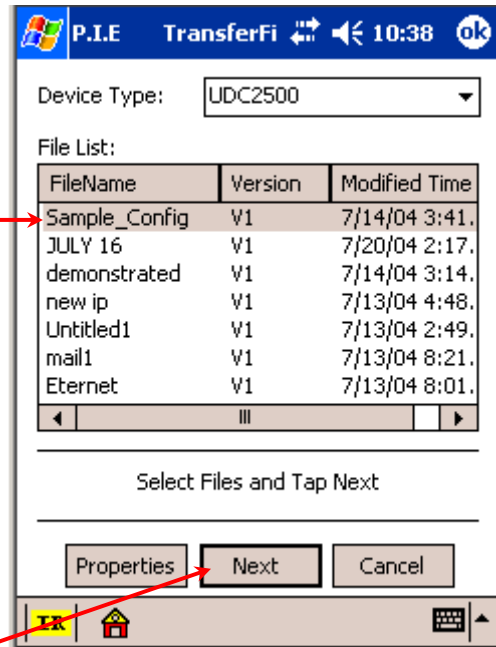






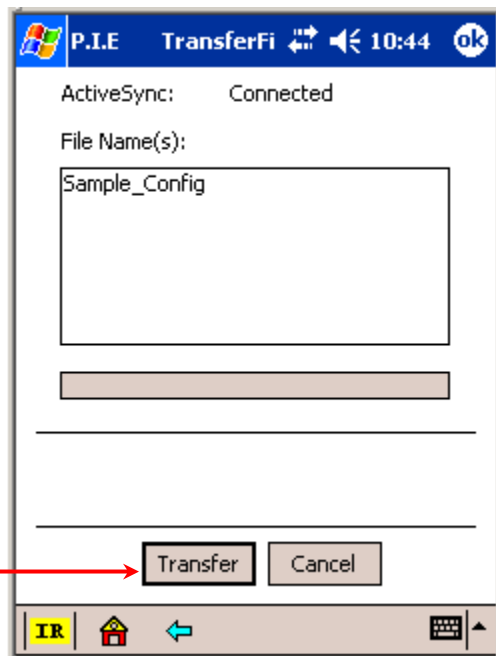
# P.I.E. Application Notes

**Step 5.** Choose file to transfer from **File List**.



**Step 6.** Select **Next**.

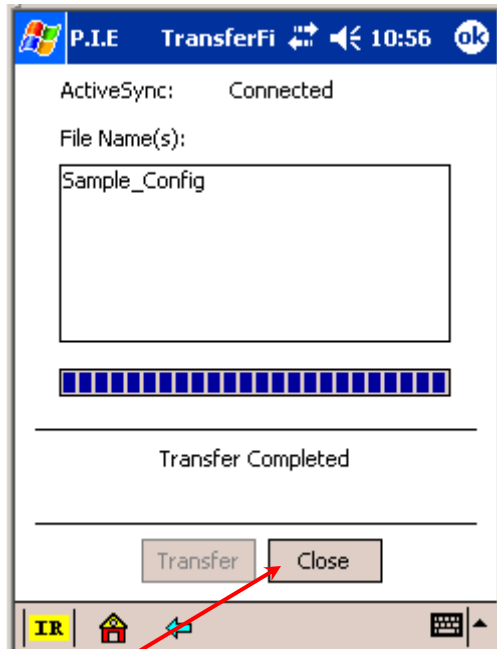
**Step 7.** Select **Transfer**.





# P.I.E. Application Notes

**Step 8.** When transfer is completed, this screen will appear.



**Step 9.** Press **Close** to exit.

**Step 10.** Configuration file is now available in PC.

