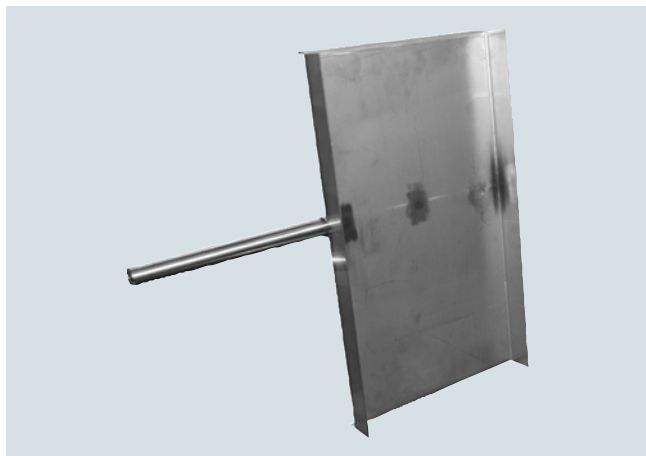


### Overview



The sensing plate transfers the impact force to the sensing head of the flowmeter.

### Selection and ordering data

SITRANS Flowmeter sensing plates	Article No.
Sensing plates transfer the impact force to the sensing head of the flowmeter.	7MH7114- 0
Click on the Article No. for the online configuration in the PIA Life Cycle Portal.	
<b>Version</b>	
WF330, 40 t/h, base mount or side mount	1
WF340, 40 t/h, base mount or side mount	3
WF350, 40 t/h, base mount or side mount	4
WF330, 300 t/h	5
WF340, 300 t/h	6
WF350, 300 t/h	7
C-40	8
<b>Plate size</b>	
18 x 10 inch (457.2 x 254 mm), for version option 1 with 2, 4 or 6 inch (50.8, 101.6 or 152.4 mm) flowguide <sup>1)</sup>	A
20 x 12 inch (508 x 304.8 mm), for version option 1 with 8 inch (203.2 mm) flowguide <sup>1)</sup>	B
20 x 14 inch (508 x 355.6 mm), for version option 1 with 10 inch (254 mm) flowguide <sup>1)</sup>	C
22 x 12 inch (558.8 x 304.8 mm), for version option 5 with 6 or 8 inch (152.4 or 203.2 mm) flowguide <sup>1)</sup>	D
24 x 16 inch (609.6 x 406.4 mm), for version option 5 with 10 or 12 inch (254 or 304.8 mm) flowguide <sup>1)</sup>	E
24 x 20 inch (609.6 x 508 mm), for version option 5 with 14 or 16 inch (355.6 or 406.4 mm) flowguide <sup>1)</sup>	F
12 x 12 inch (304.8 x 304.8 mm), for version option 4 with 8 inch (203.2 mm) flowguide <sup>2)</sup>	G
16 x 14 inch (406.4 x 355.6 mm), for version option 4 with 12 inch (304.8 mm) flowguide <sup>2)</sup>	H
14 x 18 inch (355.6 x 457.2 mm), for version option 7 with 10 inch (254 mm) flowguide <sup>2)</sup>	J
18 x 20 inch (457.2 x 508 mm), for version option 7 with 14 inch (355.6 mm) flowguide <sup>2)</sup>	K

### Selection and ordering data

### Article No.

SITRANS Flowmeter sensing plates	Article No.
Sensing plates transfer the impact force to the sensing head of the flowmeter.	7MH7114- 0
24 x 22 inch (609.6 x 558.8 mm), for version option 7 with 20 inch (508 mm) flowguide <sup>2)</sup>	L
12 x 10 inch (304.8 x 254 mm), for version option 3 with 3 x 6 inch (76.2 x 152.4 mm) flowguide <sup>3)</sup>	M
14 x 14 inch (355.6 x 355.6 mm), for version option 3 with 4 x 10 inch (101.6 x 254 mm) flowguide <sup>3)</sup>	N
16 x 16 inch (406.4 x 406.4 mm), for version option 3 with 5 x 12 inch (127 x 304.8 mm) flowguide <sup>3)</sup>	P
18 x 20 inch (457.2 x 508 mm), for version option 6 with 5 x 16 inch (127 x 406.4 mm) flowguide <sup>3)</sup>	Q
20 x 24 inch (508 x 609.6 mm), for version option 6 with 6 x 20 inch (152.4 x 508 mm) flowguide <sup>3)</sup>	R
12 x 12 inch (304.8 x 304.8 mm), for C-40 with 6 inch (152.4 mm) flowguide <sup>4)</sup>	S
12 x 14 inch (304.8 x 355.6 mm), for C-40 with 10 inch (254 mm) flowguide <sup>4)</sup>	T
<b>Plate material</b>	
304 (1.4301) stainless steel <sup>5)</sup>	A
304 (1.4301) stainless steel <sup>6)</sup>	B
316 (1.4401) stainless steel <sup>7)</sup>	C
316 (1.4401) stainless steel <sup>6)</sup>	D
304 (1.4301) stainless steel, heavy-duty <sup>7)</sup>	E
304 (1.4301) stainless steel, heavy-duty <sup>6)</sup>	F
316 (1.4401) stainless steel, light-duty <sup>8)</sup>	G
316 (1.4401) stainless steel, heavy-duty <sup>7)</sup>	H
316 (1.4401) stainless steel, heavy-duty <sup>6)</sup>	J
<b>Plate liner</b>	
No liner	1
Polyurethane <sup>7)</sup>	2
Polyurethane <sup>6) 9)</sup>	3
PTFE <sup>7)</sup>	4
PTFE <sup>6)</sup>	5
Alumina ceramic tiles <sup>7)</sup>	6
Alumina ceramic tiles <sup>6)</sup>	7
<b>Further designs</b>	Order Code
Please add <b>"-Z"</b> to article no. and specify order code(s).	
Inspection certificate type 3.1 per EN 10204	C12
<b>Instruction manuals</b>	
All literature is available to download for free, in a range of languages, at <a href="https://www.siemens.com/weighing/documentation">https://www.siemens.com/weighing/documentation</a>	
1) See 7MH7102, page 6/18.	
2) See 7MH7106, page 6/23.	
3) See 7MH7104, page 6/21.	
4) Available as spare part only.	
5) Available with flowmeter version 1 ... 4 and 8 only.	
6) Available with flowmeter version 5 ... 7 only.	
7) Available with flowmeter version 1 ... 4 only.	
8) Available with flowmeter version 1, 2 and 3 only.	
9) Maximum material temperature: 85 °C (185 °F).	

## Solid Flowmeters

Solids flowmeters accessories

### Solids flowmeters peripherals

#### Selection and ordering data

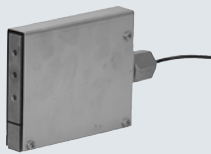
##### Flowmeter spare load cells

##### Millflo flowmeters stainless steel, with hardware

- 1 lb (0.5 kg)
- 2 lb (0.9 kg)
- 5 lb (2.3 kg)
- 10 lb (4.6 kg)
- 20 lb (9.2 kg)

Article No.

- Replace with 2 lb**
- PBD-23900176**
- PBD-23900177**
- 7MH7725-1AA**
- 7MH7725-1AB**



##### Millflo L, M, and MA series flowmeters stainless steel, with hardware

- 50 lb (22.7 kg)
- 100 lb (45.4 kg)

- 7MH7725-1AC**
- 7MH7725-1AD**

