

ASCO™ Series 158 Valve Body

Single & Monoblock | 2-Way Normally Closed | NPT (3/4" to 3") & ISO (20mm to 80mm) End Connectors

SERIES
158

- Series 158 is designed exclusively for use with Series 159 Motorized Actuator
- These valve bodies are two-way and normally closed and designed for on/off control of commercial or industrial gas burners
- This product is a push-to-open valve which opens when the valve stem is depressed by an 159 motorized actuator – an internal return spring closes the valve when the motorized actuator is de-energized
- End connections in a wide range of sizes and type are available for ease of installation and service
- These valves are provided with upstream and downstream pipe taps with plugs for routine testing



Fluid

Fuel Gas

Construction

Valve Parts in Contact with Fluids	
Body	Die-cast aluminum
Bonnet	Die-cast aluminum
Seals	Nitrile
Springs	Zinc-plated steel
Stem Bushing	Delrin
Valve Stem	303 stainless steel
Discs	NBR
Retaining Ring	303 stainless steel
Pipe Plugs	Zinc-plated steel
Seal Ring	PTFE (models with overtravel)
Stem Connector	303 stainless steel

Model Types

Standard construction (quick opening trim):

For applications in which metered flow control is not required. To be used with ON/OFF 159 ASCO motorized actuator.

Standard construction (quick opening trim) w/ Valve Seal Overtravel:

For any “on-off” application in which the user, code or approval agency requires a valve seal overtravel arrangement. To be used with an ON/OFF 159 ASCO motorized actuator with Proof-Of-Closure Switch.

Linear Trim:

For applications that require flow control, such as slow opening, or low fire turn down. To be used with a High/Low/Off 159 ASCO motorized actuator.

Linear w/Valve Seal Overtravel Trim:

For applications in which both valve seal overtravel and flow control are required. To be used with a High/Low/Off 159 ASCO motorized actuator with Proof-Of-Closure Switch.

Closeoff Pressure

75 psi (5.17 bar) maximum

Installation

Series 158 valve body mounts in any position directly to Series 159 motorized actuator.



Approvals

158 valve with 159 Actuator

UL listed to standard 429 “Electrically Operated Valves”,
Guide Y10Z, File MP932 Safety Shutoff Valves
CSA Certified to Automatic Gas Shutoff Valves ANSI Z21.21
CSA 6.5, C/I. File 113070
(meets applicable standard G22.2 No.139 requirements)
FM Approved to Class 7400 “liquid and gas safety shutoff valves.”
Complies with RoHS directives

Ordering Information

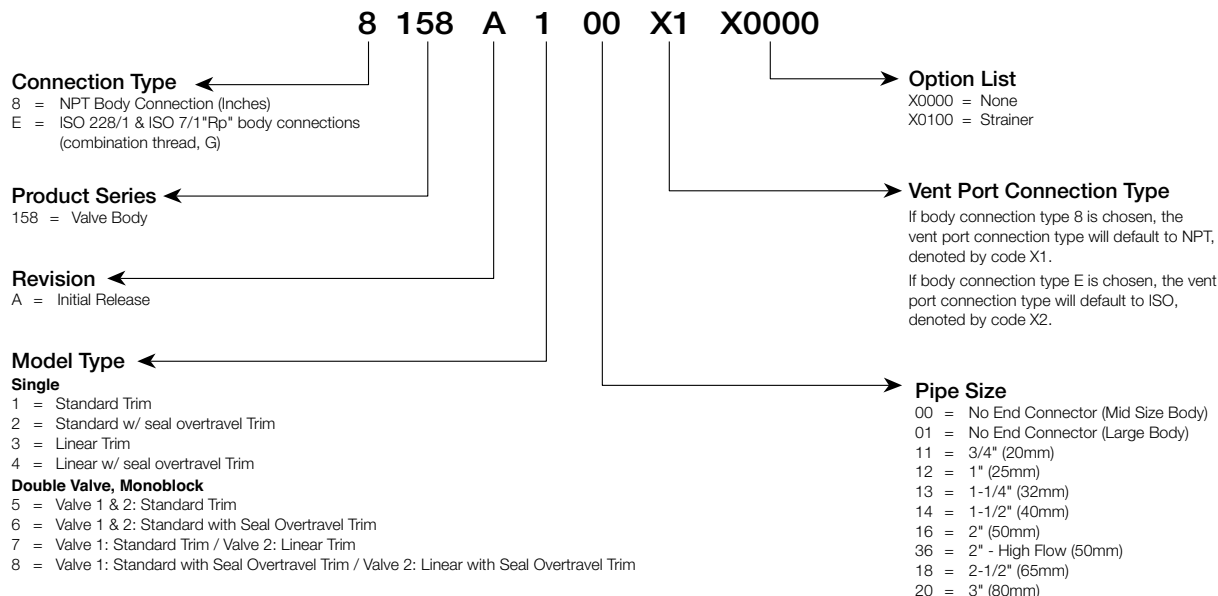
Order by Catalog Number and add suffix number for desired optional feature(s). Online configurator is available for this product on Emerson.com.

SERIES 158

ASCO™ Series 158 Valve Body

Single & Monoblock | 2-Way Normally Closed | NPT (3/4" to 3") & ISO (20mm to 80mm) End Connectors

Codification



To order valve bodies without end connections:
select code "00" in Pipe Size for sizes 3/4" (20mm) to 2" (50mm)
select code "01" in Pipe Size for sizes 2" (50mm) High Flow to 3" (80mm)

End Connection Kits

Pipe Size in (mm)	Adapter - Hardware Kit NPT / ISO
3/4 (20)	M200687 / M200688
1 (25)	M200685 / M200686
1 1/4 (32)	M200683 / M200684
1 1/2 (40)	M200681 / M200682
2 (50)	M200679 / M200680
2 (High Flow) (50)	M200693 / M200694
2 1/2 (65)	M200691 / M200692
3 (80)	M200689 / M200690

ASCO™ Series 158 Valve Body

Single & Monoblock | 2-Way Normally Closed | NPT (3/4" to 3") & ISO (20mm to 80mm) End Connectors

SERIES
158

Double Valve Monoblock Specifications English (Metric)

Base Catalog Number		Orifice Nominal in (mm)	Pipe Size (Main) in (mm)	Flow Factor Cv (Kv = m³/h)	Flow Capacity Ft³/Hr ①	Gas Capacity BTU/Hr ①	Heat Output Capacity kW ①	Operating Pressure Differential		Close-Off Pressure psi (bar)
Standard Trim on Both Valves	Standard w/ Seal Overtravel Trim on Both Valves							Minimum psi (bar)	Maximum psi (bar)	
_158A511__X0000	_158A611__X0000	2 3/32 (53)	3/4 (20)	17.4 (15.0)	733	932,000	273	0	15 (1.0)	30 (2.1)
_158A512__X0000	_158A612__X0000	2 3/32 (53)	1 (25)	27.8 (24.0)	1,192	1,490,000	437	0	15 (1.0)	30 (2.1)
_158A513__X0000	_158A613__X0000	2 3/32 (53)	1-1/4 (32)	39.2 (33.9)	1,683	2,103,000	616	0	15 (1.0)	30 (2.1)
_158A514__X0000	_158A614__X0000	2 3/32 (53)	1-1/2 (40)	46.7 (40.4)	2,003	2,503,000	734	0	15 (1.0)	30 (2.1)
_158A516__X0000	_158A616__X0000	2 3/32 (53)	2 (50)	53.6 (46.4)	2,300	2,874,000	842	0	15 (1.0)	30 (2.1)
_158A536__X0000	_158A636__X0000	3 (76)	2 High Flow (50)	84.6 (73.2)	3,631	4,538,500	1,330	0	15 (1.0)	30 (2.1)
_158A518__X0000	_158A618__X0000	3 (76)	2-1/2 (65)	99.7 (86.2)	4,279	5,349,000	1,568	0	15 (1.0)	30 (2.1)
_158A520__X0000	_158A620__X0000	3 (76)	3 (80)	112.9 (97.6)	4,845	6,057,000	1,775	0	15 (1.0)	30 (2.1)
Standard Trim on Valve 1 Linear Trim on Valve 2	Standard w/ Seal Overtravel Trim on Valve 1 Linear w/ Seal Overtravel Trim on Valve 2									
_158A711__X0000	_158A811__X0000	2 3/32 (53)	3/4 (20)	15.4 (13.3)	662	827,000	242	0	15 (1.0)	30 (2.1)
_158A712__X0000	_158A812__X0000	2 3/32 (53)	1 (25)	22.3 (19.3)	959	1,198,000	351	0	15 (1.0)	30 (2.1)
_158A713__X0000	_158A813__X0000	2 3/32 (53)	1-1/4 (32)	32.7 (28.3)	1,405	1,756,000	515	0	15 (1.0)	30 (2.1)
_158A714__X0000	_158A814__X0000	2 3/32 (53)	1-1/2 (40)	41.1 (35.6)	1,766	2,207,000	647	0	15 (1.0)	30 (2.1)
_158A716__X0000	_158A816__X0000	2 3/32 (53)	2 (50)	48.7 (42.1)	2,088	2,610,000	765	0	15 (1.0)	30 (2.1)
_158A736__X0000	_158A836__X0000	3 (76)	2 High Flow (50)	76.4 (66.1)	3,278	4,097,000	1,201	0	15 (1.0)	30 (2.1)
_158A718__X0000	_158A818__X0000	3 (76)	2-1/2 (65)	90.9 (78.6)	3,899	4,874,000	1,428	0	15 (1.0)	30 (2.1)
_158A720__X0000	_158A820__X0000	3 (76)	3 (80)	97.6 (84.4)	4,189	5,236,000	1,535	0	15 (1.0)	30 (2.1)

① Capacity value is based on a gas having a heating value of 1000 Btu/Cu. ft. and a specific gravity of 0.64 at 2" W.C. inlet pressure per 1.0" W.C. Pressure Drop.

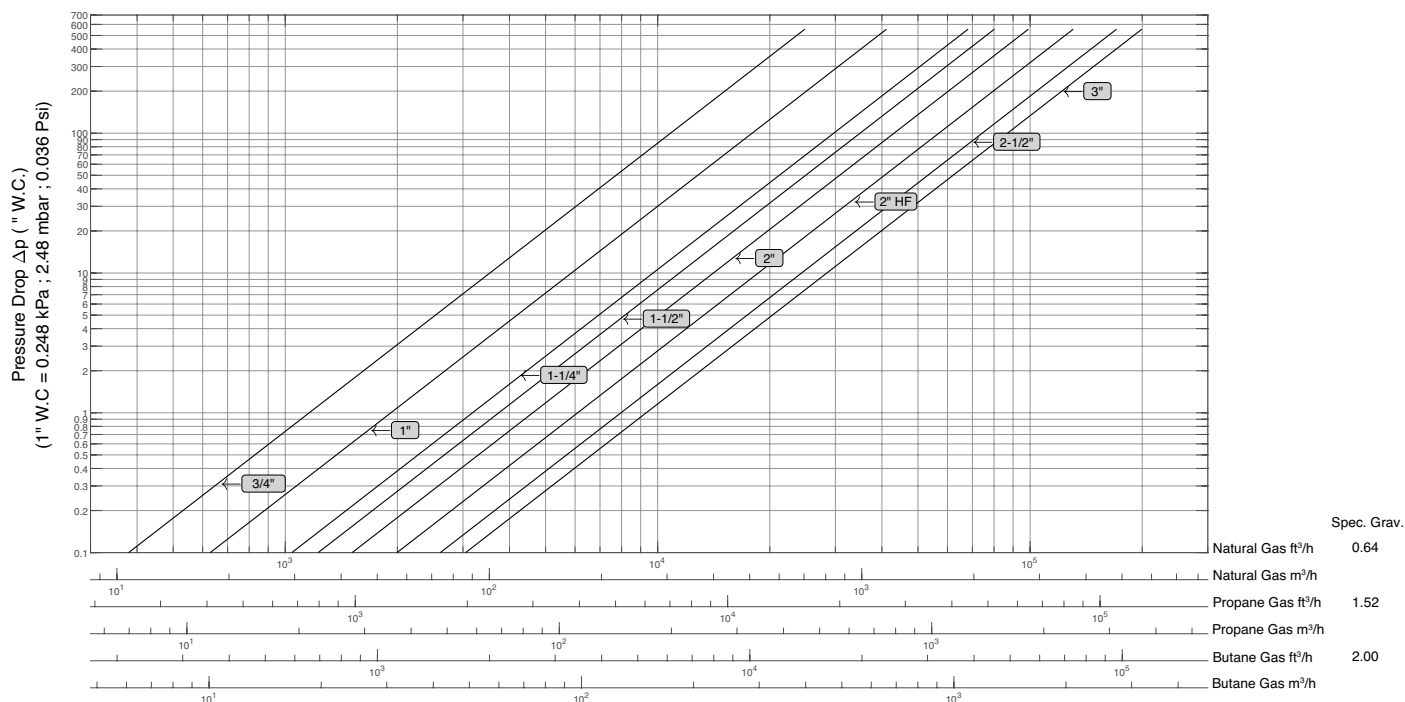
Single Valve, Specifications English (Metric)

Base Catalog Number		Orifice Nominal in (mm)	Pipe Size (Main) in (mm)	Flow Factor Cv (Kv = m³/h)	Flow Capacity Ft³/Hr ①	Gas Capacity BTU/Hr ①	Heat Output Capacity kW ①	Operating Pressure Differential		Close-Off Pressure psi (bar)
Standard Trim	Standard w/ Seal Overtravel Trim							Minimum psi (bar)	Maximum psi (bar)	
_158A111__X0000	_158A211__X0000	2 3/32 (53)	3/4 (20)	18.2 (15.7)	772	974,000	285	0	15 (1.0)	75 (5.2)
_158A112__X0000	_158A212__X0000	2 3/32 (53)	1 (25)	30.1 (26.0)	1,290	1,613,000	473	0	15 (1.0)	75 (5.2)
_158A113__X0000	_158A213__X0000	2 3/32 (53)	1-1/4 (32)	49.8 (43.1)	2,137	2,671,000	783	0	15 (1.0)	75 (5.2)
_158A114__X0000	_158A214__X0000	2 3/32 (53)	1-1/2 (40)	58.6 (50.7)	2,515	3,143,000	921	0	15 (1.0)	75 (5.2)
_158A116__X0000	_158A216__X0000	2 3/32 (53)	2 (50)	72.3 (62.5)	3,103	3,878,000	1,137	0	15 (1.0)	75 (5.2)
_158A136__X0000	_158A236__X0000	3 (76)	2 High Flow (50)	95.4 (82.5)	4,094	5,118,000	1,500	0	15 (1.0)	50 (3.4)
_158A118__X0000	_158A218__X0000	3 (76)	2-1/2 (65)	124.7 (107.9)	5,352	6,690,000	1,961	0	15 (1.0)	50 (3.4)
_158A120__X0000	_158A220__X0000	3 (76)	3 (80)	145.8 (126.1)	6,257	7,822,000	2,292	0	15 (1.0)	50 (3.4)
Linear Trim	Linear w/ Seal Overtravel Trim									
_158A311__X0000	_158A411__X0000	2 3/32 (53)	3/4 (20)	15.8 (13.6)	676	845,000	248	0	15 (1.0)	75 (5.2)
_158A312__X0000	_158A412__X0000	2 3/32 (53)	1 (25)	24.5 (21.2)	1,052	1,315,000	385	0	15 (1.0)	75 (5.2)
_158A313__X0000	_158A413__X0000	2 3/32 (53)	1-1/4 (32)	38.9 (33.6)	1,668	2,085,000	611	0	15 (1.0)	75 (5.2)
_158A314__X0000	_158A414__X0000	2 3/32 (53)	1-1/2 (40)	50.7 (43.8)	2,174	2,718,000	797	0	15 (1.0)	75 (5.2)
_158A316__X0000	_158A416__X0000	2 3/32 (53)	2 (50)	62.5 (54.0)	2,680	3,350,000	982	0	15 (1.0)	75 (5.2)
_158A336__X0000	_158A436__X0000	3 (76)	2 High Flow (50)	92.5 (80.0)	3,971	4,964,000	1,455	0	15 (1.0)	50 (3.4)
_158A318__X0000	_158A418__X0000	3 (76)	2-1/2 (65)	116.6 (100.8)	5,002	6,252,500	1,832	0	15 (1.0)	50 (3.4)
_158A320__X0000	_158A420__X0000	3 (76)	3 (80)	138.0 (119.3)	5,922	7,402,000	2,169	0	15 (1.0)	50 (3.4)

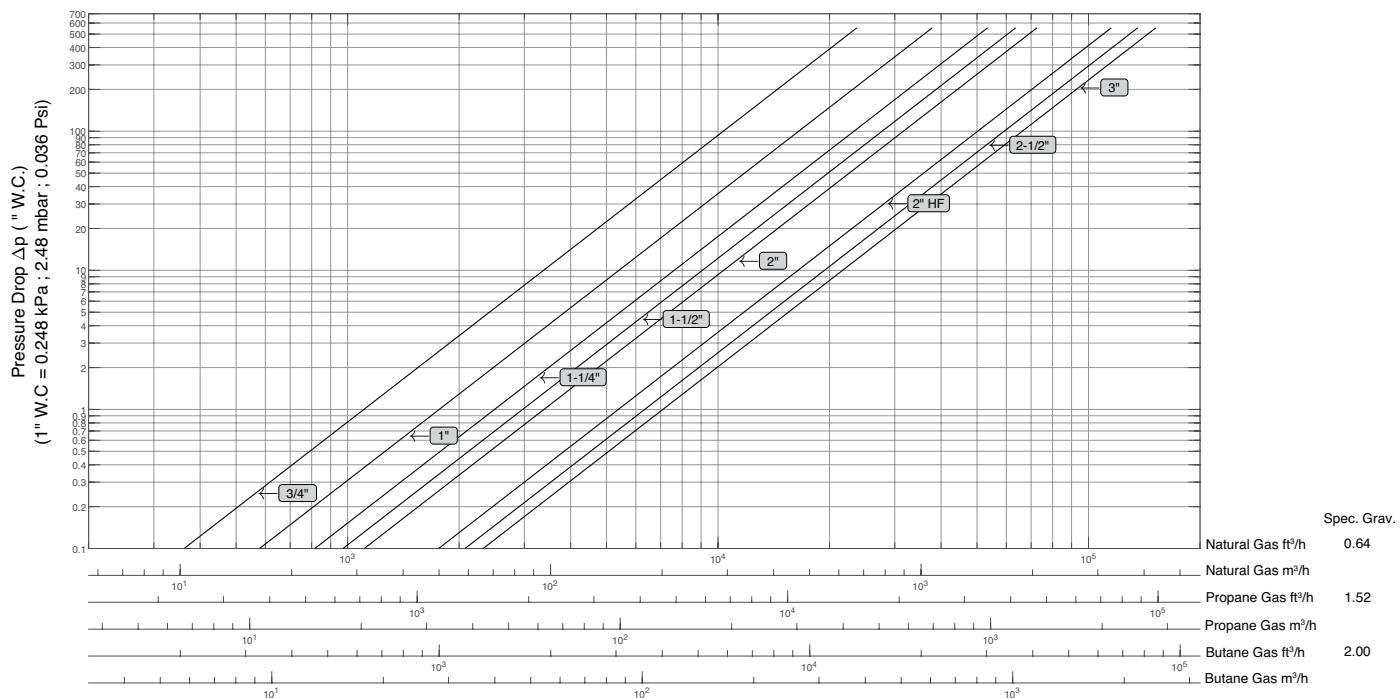
① Capacity value is based on a gas having a heating value of 1000 Btu/Cu. ft. and a specific gravity of 0.64 at 2" W.C. inlet pressure per 1.0" W.C. Pressure Drop.

Gas Flow Charts

Single Valve



Double Monoblock Valve



Notes: Flow curves are based on the following standard conditions: 5 psi (0.3 bar) inlet pressure and 68°F (20°C) fluid temperature.
The Single and Monoblock Valve Flow Curves are based on Standard Seal constructions.

ASCO™ Series 158 Valve Body

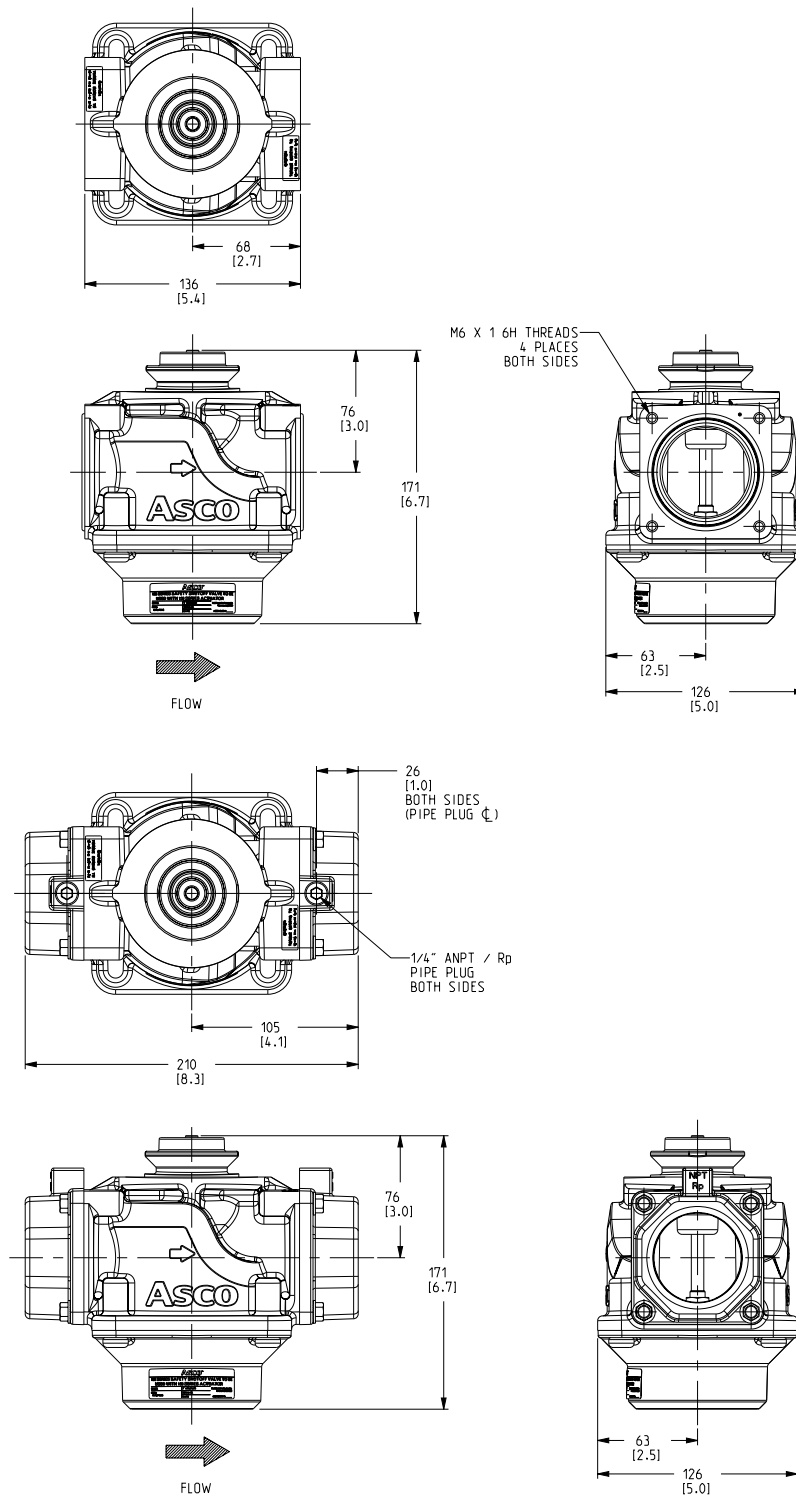
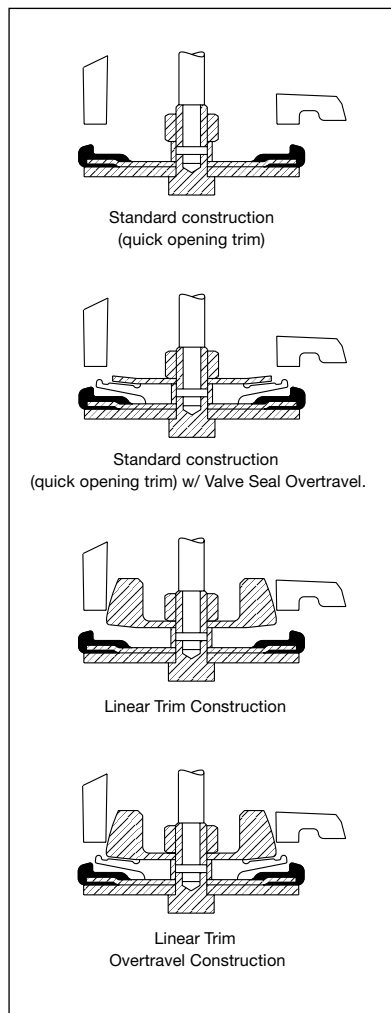
Single & Monoblock | 2-Way Normally Closed | NPT (3/4" to 3") & ISO (20mm to 80mm) End Connectors

**SERIES
158**

Dimensions: mm (inches)

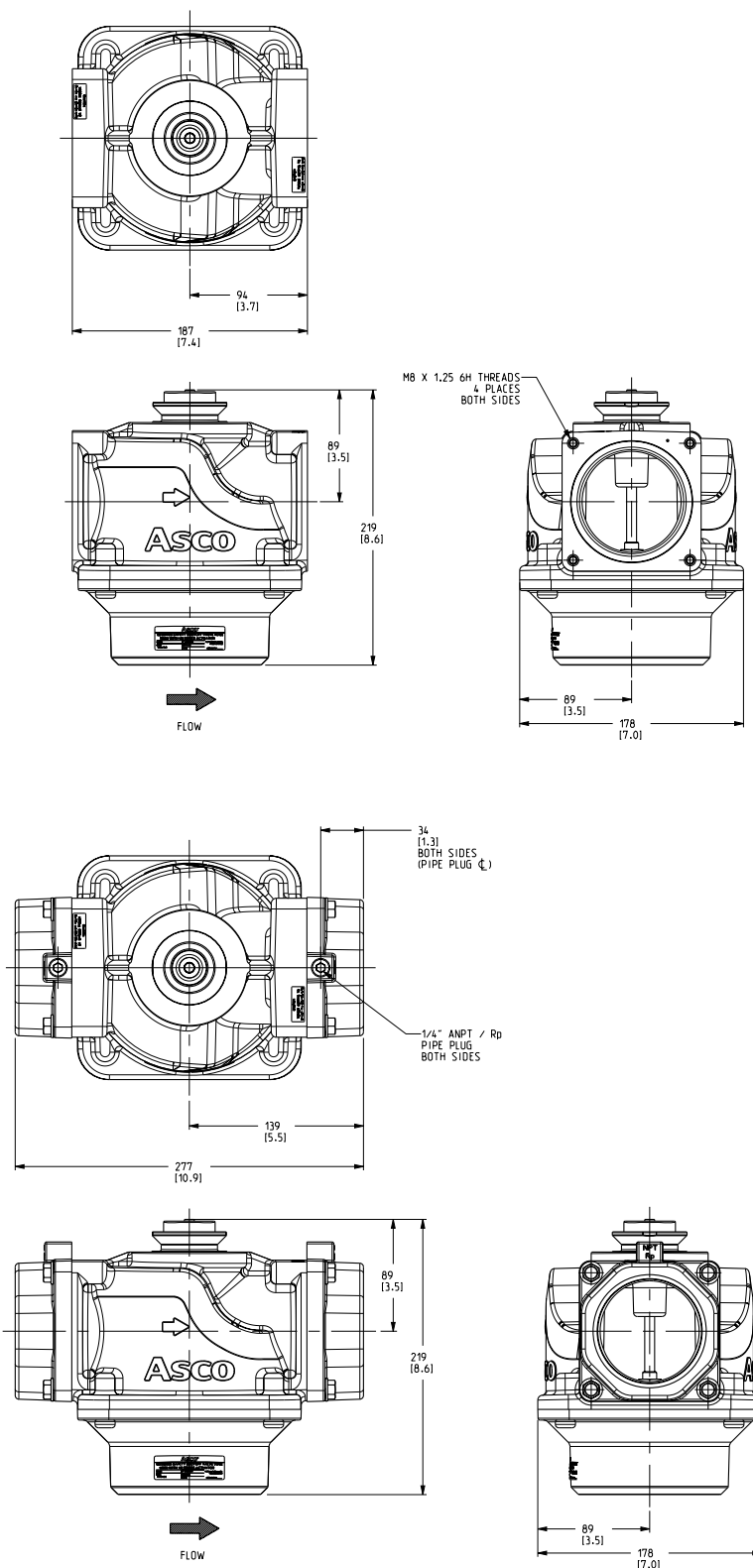
Single Valve - 3/4", 1", 1 1/4", 1 1/2" and 2"

Trim Types



Dimensions: mm (inches)

Single Valve - 2" High Flow, 2 1/2" and 3"



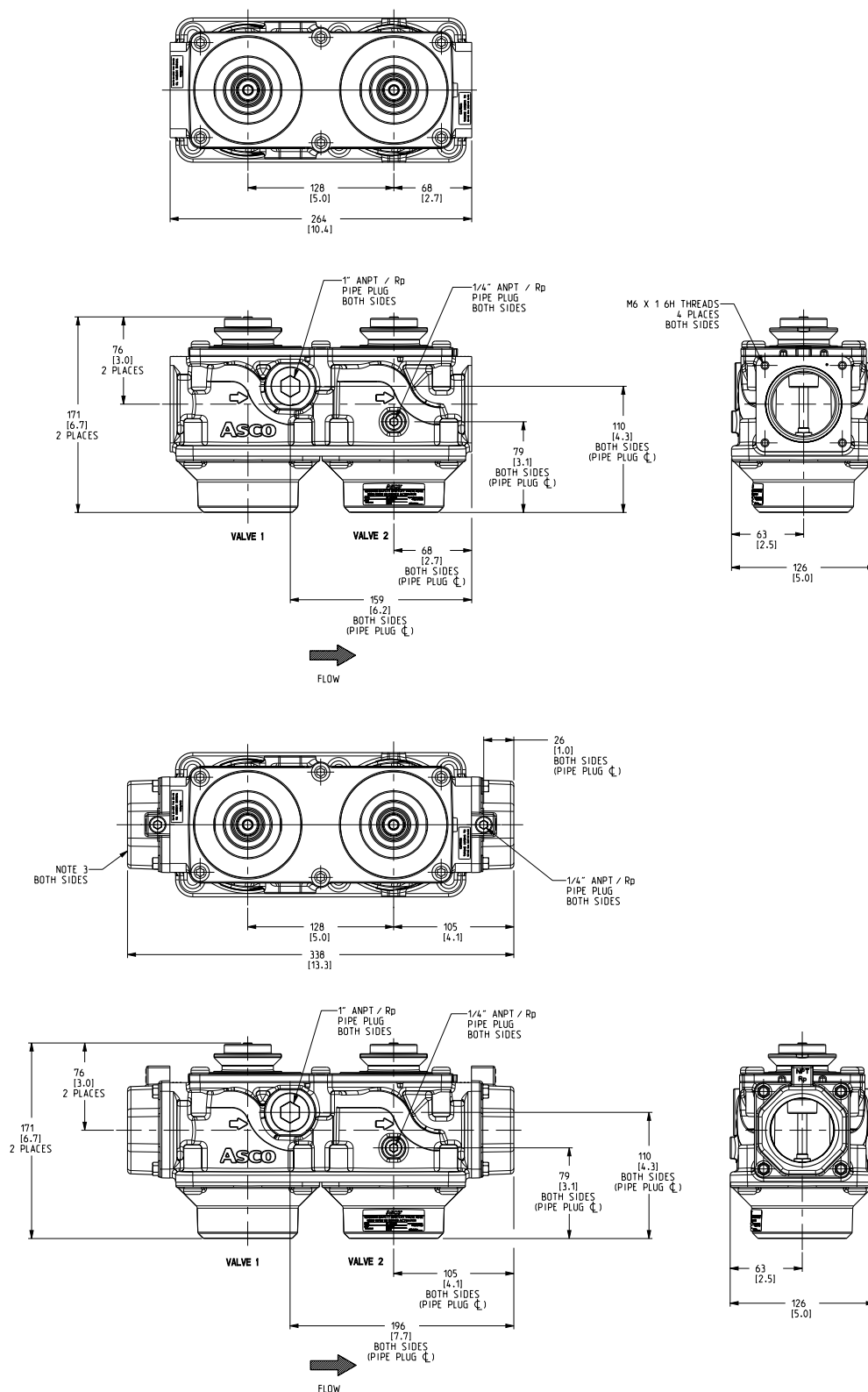
ASCO™ Series 158 Valve Body

Single & Monoblock | 2-Way Normally Closed | NPT (3/4" to 3") & ISO (20mm to 80mm) End Connectors

SERIES
158

Dimensions: mm (inches)

Double Monoblock Valve - 3/4", 1", 1 1/4", 1 1/2" and 2"



Dimensions: mm (inches)

Double Monoblock Valve - 2" High Flow, 2 1/2" and 3"

