

# INSTRUMENT VALVES

**TABLE OF  
CONTENTS**
**339**

 Rotary and Smart  
Actuator Motors

Instrument Valves

 Process Control  
Accessories

 Pressure and  
Temperature Switches

ASCO Solenoid Valves

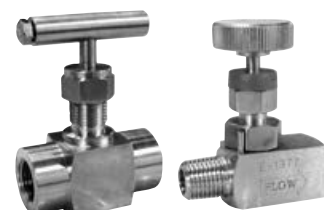
Pressure Gauges

In these pages, you'll find the most popular configurations of Hex Valve instrument and manifold valves. If you don't see the material or options you need, don't hesitate to call Lesman. We'll find it for you!

Hex Valve hand valves are great for instrument isolation duties, giving you bubble-tight shutoff, with metal or soft seats for gas, vapor, or liquid applications. Their gauge valves include multiport and block-and-bleed styles for gauge isolation, calibration, and venting.



	Prices Start at	See Page
<b>Gauge Valves</b>		
Hex Valve HB24 Bleed Valves	\$54.90	343
Hex Valve HB26 Stainless Steel Bleed Valves	\$87.30	343
Hex Valve HB59 Integral Block and Bleed Valves	\$283.50	343
Hex Valve HB50 and HB51 Block and Bleed Valves	\$189.90	342
Hex Valve HB52 Bleed Tees	\$135.00	343
Hex Valve HG46 Compact Gauge Valve	\$242.10	341
Hex Valve HG47 Roddable Orifice Valve	\$1005.30	341
Hex Valve HG48 Gauge and Block Valves	\$135.00	342
Hex Valve HG65 Orifice Block Valves	\$266.40	341
Hex Valve PG48 Gauge and Block Valves (Made to ANSI Spec)	\$364.50	348
Hex Valve PG65 Orifice Block Valves (Made to ANSI Spec)	\$539.10	348
<b>Instrument Needle Valves</b>		
Hex Valve HN29 Soft Seat Mini Needle Valves	\$61.20	346
Hex Valve HN49 Needle Valve with Integral Metal Seat	\$138.60	346
Hex Valve HN39 Stainless Steel Block Valves for High Pressures	\$55.80	347
Hex Valve HN41 Roddable Needle Valves	\$79.20	347
<b>Manifold Valves</b>		
Hex Valve HM13 and HM14 Rigid Mount Manifold	\$444.60	345
Hex Valve HM45 General Service Three-Valve Manifold	\$343.80	345
Hex Valve HM53 Flanged Manifold	\$322.20	344
Hex Valve HM54 Double-Flanged Manifold	\$334.80	344
Hex Valve HM58 Two-Valve Level Manifold	\$304.20	345
Hex Valve HM59 Static Pressure Manifold	\$245.70	344
<b>Specialty Valves</b>		
Hex Valve HS31 Sample and Tank Bottom Drain Valves	\$720.00	348
<b>Accessories</b>		
Crossover Chart from Anderson Greenwood or PGI to Hex Valve		340
Hex Valve HGVS Gauge Syphons for Steam and Heat-Transfer Media	\$263.70	347





340

**PART NUMBER  
CROSSOVER**

V01.2019






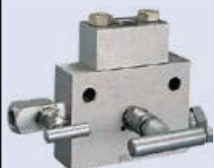


Illinois, Indiana, Missouri, and Iowa  
Phone: 800-953-7626 • 630-595-8400  
Fax: 630-595-2386









**Lesman Instrument Company**  
[www.lesman.com](http://www.lesman.com)  
[sales@lesman.com](mailto:sales@lesman.com)

Wisconsin, and Upper Peninsula Michigan  
Phone: 800-837-1700 • 262-923-1790  
Fax: 262-923-1797

## Crossing Over from Anderson Greenwood or PGI

If you know the Anderson Greenwood or Precision General (PGI) series number you need to replace, here's a quick cross-reference to the comparable Hex Valve series.

Valve Type	Series Number		
	AGCO		PGI
<b>Differential Pressure Manifolds</b>		M4	M-600
		M4	M-700
		M5 or M6	M-502
		M6	M3-673 or M3-773
		M1	M-500
<b>Gauge Pressure Manifolds</b>		M4	M-618
		MP1	M-800
		MP2	M-900
		PTM	M-518

Valve Type	Series Number		
	AGCO		PGI
<b>Universal Gauge Valves</b>		M5AK	V-516Y
		M5K-L	V3-516Y
		M5	V-516
<b>Gauge and Orifice Valves</b>		M5YK	V-579
<b>Bleed and Tee Valves</b>		BT	V-597
<b>Block and Bleed Valves</b>		M25	V-570
		M9	V-522
<b>Miniature Needle Valves</b>		M25	V-570

*Due to manufacturer agreements, these products may not be available in all markets or geographic areas.*



## HG Series Block Valves



### HG65 Orifice Block Valves

- For compact side-by-side mounting on standard orifice flanges. Ideal for tight installations
- Reduces potential leakage and costs by reducing the number of threaded connections (leak points), and lowers installation costs
- Non-rotating tip stem provides tight repeatable shutoff without galling or cross-scoring
- VOC Emissions Compliance: TFE-Chevron and high-temp Grafoil packing are certified to beat the 100 ppm EPA 1998 emission standards — no special bonnet needed
- Reduced cost and installation time: One HG65 replaces the conventional arrangement of gate valves, nipples, and tees for a lower cost, easy-to-install assembly.

#### Model Selection Guide

Inlet	Outlet	Seat	Packing	Carbon Steel		Stainless Steel	
				Catalog Number	Price	Catalog Number	Price
1/2" NPTM	1/2" NPTF	316SS	TFE	HG651S3131412	\$266.40	HG651U3131412	\$489.60
1/2" NPTM	1/2" NPTF	316SS	Graphite	HG651S3131413	269.10	HG651U3131413	491.40
3/4" NPTM	1/2" NPTF	316SS	TFE	HG651S4131412	275.40	HG651U4131412	504.90
3/4" NPTM	1/2" NPTF	316SS	Graphite	HG651S4131413	277.20	HG651U4131413	506.70

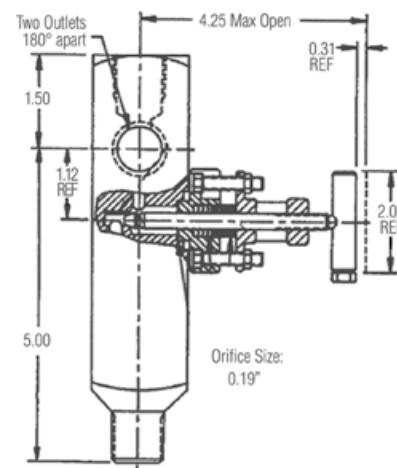


### HG46 Gauge Valves

- Compact, so you use less space with other valves
- Reduces threaded connection leak points
- Non-rotating tip eliminates seat galling, provides a bubble-tight shutoff
- OS&Y bonnet for added safety
- Packing below the threads prevents lubricant washout and corrosion

#### Model Selection Guide

Inlet	Outlet	Seat	Packing	Carbon Steel		Stainless Steel	
				Catalog Number	Price	Catalog Number	Price
1/2" NPTM	1/2" NPTF	Integral	TFE	HG461S3131412	\$242.10	HG461U3131412	\$295.20
1/2" NPTM	1/2" NPTF	Integral	Graphite	HG461S3131413	243.90	HG461U3131413	297.00
3/4" NPTM	1/2" NPTF	Integral	TFE	HG461S4131412	252.90	HG461U4131412	306.00
3/4" NPTM	1/2" NPTF	Integral	Graphite	HG461S4131413	254.70	HG461U4131413	307.80



**Available with Teflon soft seat. Call for pricing.**

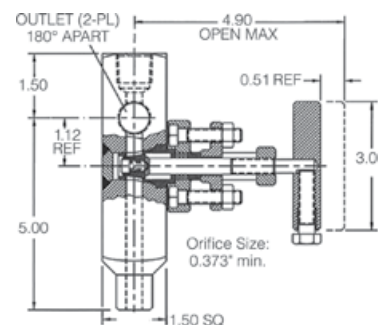


### HG47 Roddable Orifice Valves

- Roddable hard-seat orifice valve ideal for high temperature, viscous services
- Non-rotating top eliminates seat galling, provides bubble-tight shutoff
- Reduce components and leak points to cut costs
- Compact design uses less space with other valves
- OS&Y bolted bonnet with threaded connections

#### Model Selection Guide

Inlet	Outlet	Seat	Packing	Carbon Steel		Stainless Steel	
				Catalog Number	Price	Catalog Number	Price
1/2" NPTM	1/2" NPTF	316SS Insert	TFE	HG471S3131J22	\$1005.30	HG471U3131J22	\$ 1021.50
1/2" NPTM	1/2" NPTF	316SS Insert	Graphite	HG471S3131J23	1007.10	HG471U3131J23	1023.30
3/4" NPTM	1/2" NPTF	316SS Insert	TFE	HG471S4131J22	1025.10	HG471U4131J22	1041.30
3/4" NPTM	1/2" NPTF	316SS Insert	Graphite	HG471S4131J23	1026.90	HG471U4131J23	1043.10

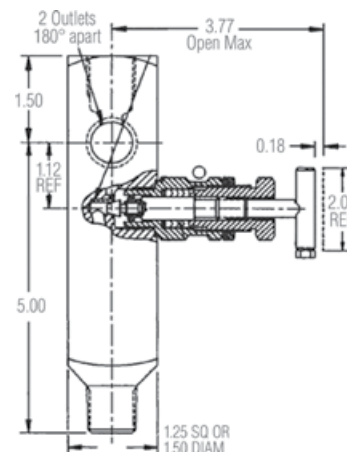


## Gauge Block and Bleed Valves *HG and HB Series*



### HG48 Gauge and Block Valves

- Provides three outlet connections for mounting gauges and static pressure instruments
- Fewer threaded connections for reduced leak points
- Teflon or graphite packing below threads prevents lubricant wash-out and corrosion



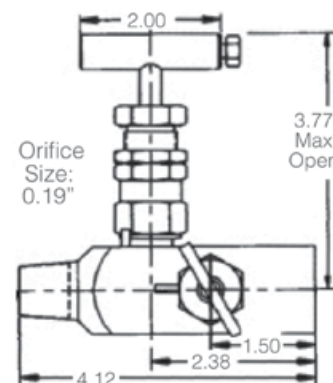
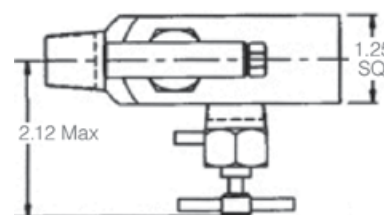
#### Model Selection Guide

Inlet	Outlet	Seat	Packing	Carbon Steel		Stainless Steel	
				Catalog Number	Price	Catalog Number	Price
1/2" NPTM	1/2" NPTF	Integral	TFE-Chevron	HG481S3131412	\$135.00	HG481U3131412	\$231.30
1/2" NPTM	1/2" NPTF	Integral	Graphite	HG481S3131413	137.70	HG481U3131413	233.10
1/2" NPTM	1/2" NPTF	TFE (Soft)	TFE-Chevron	HG482S3131262	211.50	HG482U3131262	256.50
3/4" NPTM	1/2" NPTF	Integral	TFE-Chevron	HG481S4131412	149.40	HG481U4131412	243.90
3/4" NPTM	1/2" NPTF	Integral	Graphite	HG481S4131413	151.20	HG481U4131413	245.70
3/4" NPTM	1/2" NPTF	TFE (Soft)	TFE-Chevron	HG482S4131262	223.20	HG482U4131262	268.20



### HB50/HB51 Block and Bleed Valves

- Compact two-valves-in-one saves space
- HB50 is a fully packed and backseated block valve with a bleed valve, discharge tube, and stem stop
- Can be threaded into a primary block valve (HG46) for secondary block and bleed functions on multiple-instrument installations
- HB51 uses bleed screw instead of bleed valve
- Longer extension lengths also available. Call for pricing



#### Model Selection Guide

Inlet	Outlet	Seat	Packing	Carbon Steel		Stainless Steel	
				Catalog Number	Price	Catalog Number	Price
HB50: Fully packed and backseated block valve with bleed valve, discharge tube, and stem stop							
1/2" NPTM	1/2" NPTF	Integral	TFE	HB501S3131412	\$189.90	HB501U3131412	\$198.00
1/2" NPTM	1/2" NPTF	Integral	Graphite	HB501S3131413	191.70	HB501U3131413	200.70
1/2" NPTF	1/2" NPTF	Integral	TFE	HB501S3331412	204.30	HB501U3331412	220.50
1/2" NPTF	1/2" NPTF	Integral	Graphite	HB501S3331413	206.10	HB501U3331413	223.20
1/2" NPTM	1/2" NPTF	TFE (Soft)	TFE	HB502S3131262	202.50	HB502U3131262	278.10
3/4" NPTM	1/2" NPTF	Integral	TFE	HB501S4131412	194.40	HB501U4131412	209.70
3/4" NPTM	1/2" NPTF	Integral	Graphite	HB501S4131413	206.10	HB501U4131413	211.50
3/4" NPTM	1/2" NPTF	TFE (Soft)	TFE	HB502S4131262	216.00	HB502U4131262	292.50
HB50: Fully packed and backseated block valve with bleed screw.							
1/2" NPTM	1/2" NPTF	Integral	TFE	HB511S3131412	206.10	HB511U3131412	220.50
1/2" NPTM	1/2" NPTF	Integral	Graphite	HB511S3131413	209.70	HB511U3131413	223.20
3/4" NPTM	1/2" NPTF	Integral	TFE	HB511S4131412	202.50	HB511U4131412	232.20
3/4" NPTM	1/2" NPTF	Integral	Graphite	—	—	HB511U4131413	234.00

**Don't see the valve you need? Call us!**



Illinois, Indiana, Missouri, and Iowa  
Phone: 800-953-7626 • 630-595-8400  
Fax: 630-595-2386

**Lesman Instrument Company**  
www.lesman.com  
sales@lesman.com

Wisconsin, and Upper Peninsula Michigan  
Phone: 800-837-1700 • 262-923-1790  
Fax: 262-923-1797

V01.2019

**BLOCK & BLEED  
VALVES**

**343**

**L**

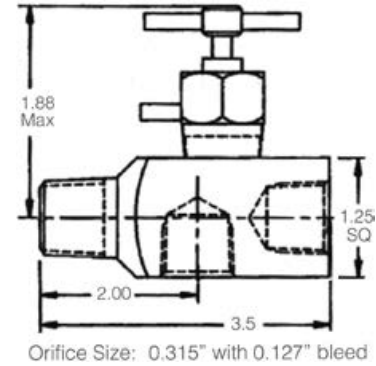


## HB52 Bleed Tees

- For modernizing non-bleed gauge installations
- Simplify bleed-off: A turn of the handle directs flow through the discharge tube
- Fewer components and leak points for improved cost savings
- Two valves in one for better use of space

### Model Selection Guide

Inlet	Outlet	Seat	Carbon Steel		Stainless Steel	
			Catalog Number	Price	Catalog Number	Price
1/2" NPTM	1/2" NPTF	Integral	HB521S313121	\$135.00	HB521U313121	\$153.90
3/4" NPTM	1/2" NPTF	Integral	HB521S413121	144.90	HB521U413121	166.50

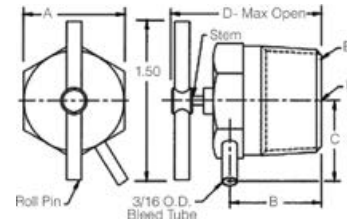


## HB24 Bleed Valves

- For bleeding off high-pressure media
- Backout stops prevent inadvertent removal of the stem
- Easy-to-use T handle plus directional discharge/drain/tube
- Compact assembly for tight shutoff and bleed capabilities

### Model Selection Guide

Inlet	Outlet	Seat	Packing	Dimensions				Carbon Steel		Stainless Steel	
				A	B	C	D	Catalog Number	Price	Catalog Number	Price
1/4" NPTM	Discharge Tube	Integral	TFE	0.62"	0.82"	0.82"	1.85"	HB241S112	\$54.90	HB241U112	\$71.10
1/2" NPTM	Discharge Tube	Integral	TFE	0.87"	1.00"	0.86"	2.14"	HB241S312	54.90	HB241U312	71.10

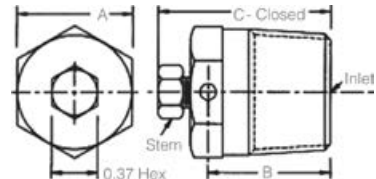


## HB26 Stainless Steel Bleed Valves

- Hex head screw and discharge hole — no drain tube

### Model Selection Guide

Inlet	Outlet	Seat	Packing	Dimensions			Catalog Number	Price
				A	B	C		
1/4" NPTM	Discharge Hole	Integral	TFE	0.62"	0.82"	1.29"	HB261U112	\$87.30
1/2" NPTM	Discharge Hole	Integral	TFE	0.87"	1.00"	1.36"	HB261U312	87.30



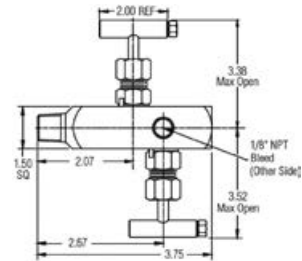
## HB59 Integral Block and Bleed Valves



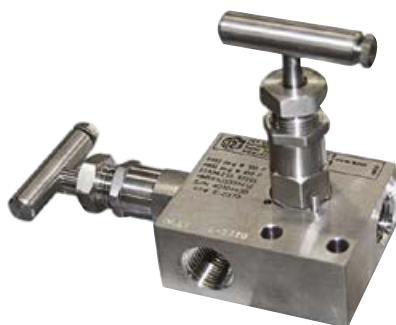
- Cost savings by reducing number of components and leak points
- Compact: two valves in one utilize less space
- Packing below threads prevents lubricant washout or corrosion
- Non-rotating tip eliminates seat galling, provides bubble-tight shut off

### Model Selection Guide

Inlet	Outlet	Seat	Packing	Carbon Steel		Stainless Steel	
				Catalog Number	Price	Catalog Number	Price
1/2" NPTM	1/2" NPTF	Integral	TFE	HB591S3131412	\$283.50	HB591U3131412	\$371.70
1/2" NPTM	1/2" NPTF	Integral	Graphite	HB591S3131413	285.30	HB591U3131413	371.70
3/4" NPTM	1/2" NPTF	Integral	TFE	—	—	HB591U4131412	331.20
3/4" NPTM	1/2" NPTF	Integral	Graphite	—	—	HB591U4131413	371.70

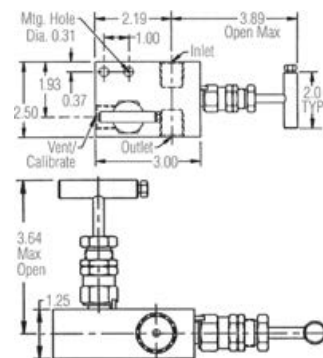


## Valve Manifolds *HM Series*



### HM59 Static Pressure Manifold

- Line-mounted two-valve manifold
- Shutoff and bleed valve for static pressure instrumentation
- Replace conventional nipples, pipes, elbows, tees, and gate valves for fewer potential leak points
- Non-rotating tip stem provides tight, repeatable shutoff without the galling or cross-scoring of ball-type stems
- Fully backseated bonnets prevent accidental stem removal and blowout, minimizes emissions



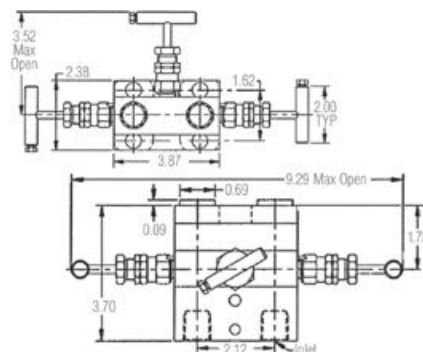
#### Model Selection Guide

Inlet	Outlet	Seat	Packing	Carbon Steel		Stainless Steel	
				Catalog Number	Price	Catalog Number	Price
1/2" NPTF	1/2" NPTF	Integral	TFE	HM591S3331412	\$245.70	HM591U3331412	\$279.90
1/2" NPTF	1/2" NPTF	Integral	Graphite	HM591S3331413	247.50	HM591U3331413	281.70
1/2" NPTF	1/2" NPTF	Integral	Viton	—	—	HM59FU3331416	295.20
1/2" NPTF	1/2" NPTF	TFE (Soft)	TFE	HM592S3331262	256.50	HM592U3331262	315.00
1/2" NPTF	1/2" NPTF	TFE (Soft)	Viton	HM59GS3331266	270.00	HM59GU3331266	306.00



### HM53 Flanged Manifold

- Three-valve instrument manifold
- For block, equalizing, and vent requirements of differential pressure transmitter applications
- Exceeds 100 ppm EPA 1998 emission standard
- Minimum emission flange protects against gasket cold flow and fugitive emissions
- Backseated bonnet prevents accidental stem removal and blowout



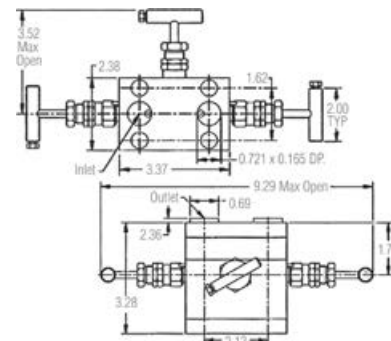
#### Model Selection Guide

Inlet	Outlet	Seat	Packing	Carbon Steel		Stainless Steel	
				Catalog Number	Price	Catalog Number	Price
1/2" NPTF	Flanged	Integral	TFE	HM531S3399412	\$322.20	HM531U3399412	\$371.70
1/2" NPTF	Flanged	Integral	Graphite	HM531S3399413	324.90	HM531U3399413	374.40
1/2" NPTF	Flanged	TFE (Soft)	TFE	HM532S3399262	407.70	HM532U3399262	449.10



### HM54 Flanged Manifold

- Double-flanged three-valve instrument manifold
- For block, equalizing, and vent requirements of differential pressure transmitter applications
- For compact, close-coupled or remote installations
- Exceeds 100 ppm EPA 1998 VOC emission standard
- Minimum emission flange protects against gasket cold flow and fugitive emissions



#### Model Selection Guide

Inlet	Outlet	Seat	Packing	Carbon Steel		Stainless Steel	
				Catalog Number	Price	Catalog Number	Price
Flanged	Flanged	Integral	TFE	HM541S9999412	\$334.80	HM541U9999412	\$381.60
Flanged	Flanged	Integral	Graphite	HM541S9999413	347.40	HM541U9999413	383.40
Flanged	Flanged	TFE (Soft)	TFE	HM542S9999262	419.40	HM542U9999262	461.70

Illinois, Indiana, Missouri, and Iowa  
Phone: 800-953-7626 • 630-595-8400  
Fax: 630-595-2386

**Lesman Instrument Company**  
www.lesman.com  
sales@lesman.com

Wisconsin, and Upper Peninsula Michigan  
Phone: 800-837-1700 • 262-923-1790  
Fax: 262-923-1797

V01.2019

**MANIFOLD  
VALVES**

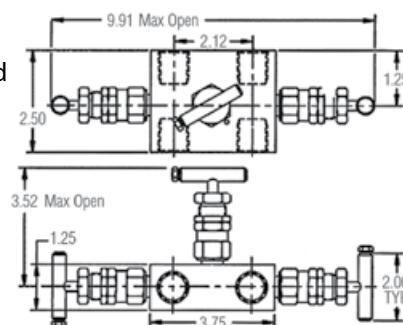
**345**

**L**



## HM45 Three-Valve Manifold

- Minimum emission flange protects against gasket cold flow and fugitive emissions
- Removable bracket option
- Non-rotating tip stem for tight, repeatable shutoff without the galling or cross-scoring of ball stems
- Fully backseated bonnets prevent accidental stem removal and blowout, minimizes emissions



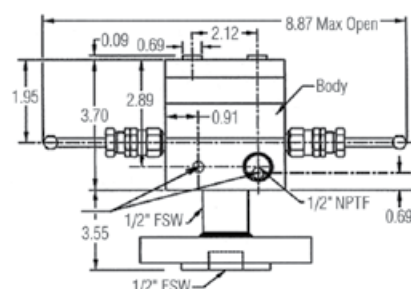
### Model Selection Guide

Inlet	Outlet	Seat	Packing	Carbon Steel		Stainless Steel	
				Catalog Number	Price	Catalog Number	Price
1/4" NPTF	1/4" NPTF	Integral	TFE	—	—	HM451U1311412	\$488.70
1/2" NPTF	1/2" NPTF	Integral	TFE	HM451S3331412	\$343.80	HM451U3331412	488.70
1/2" NPTF	1/2" NPTF	Integral	Graphite	HM451S3331413	346.50	HM451U3331413	491.40
1/2" NPTF	1/2" NPTF	TFE (Soft)	TFE	—	—	HM452U3331262	534.60



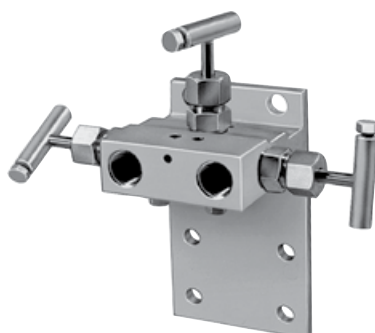
## HM58 Two-Valve Level Manifold

- Universal design can be used for vented or closed tank; top, bottom, side installations
- Exceeds 100 ppm EPA 1998 emission standard
- Purge ports eliminate requirement for signal line tubing, tees, or fittings for purge media
- Minimizes installation time; eliminates instrument pipe stands, tubing, and fittings



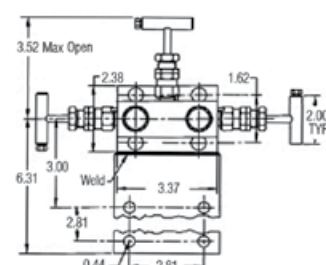
### Model Selection Guide

Inlet	Outlet	Seat	Packing	Carbon Steel		Stainless Steel	
				Catalog Number	Price	Catalog Number	Price
1/2" NPTF	Flanged	Integral	TFE	HM581S3399412	\$304.20	HM581U3399412	\$404.10
1/2" NPTF	Flanged	Integral	Graphite	HM581S3399413	306.00	HM581U3399413	405.90
1/2" NPTF	Flanged	TFE (Soft)	TFE	HM582S3399262	405.00	HM582U3399262	495.00
1.0"/150#	Flanged	Integral	TFE	—	—	HM581U5C99412	888.30
1.0"/300#	Flanged	Integral	Graphite	—	—	HM581U5D99413	911.70
1.5"/150#	Flanged	Integral	Graphite	—	—	HM581U6C99413	922.50



## HM13-HM14 Rigid Mount Manifold

- Single or double flanged three valve manifolds
- Non-rotating tip stem provides tight, repeatable shutoff without the galling or cross-scoring of ball-type stems
- Fully backseated bonnets prevent accidental stem removal and blowout, reduces emissions

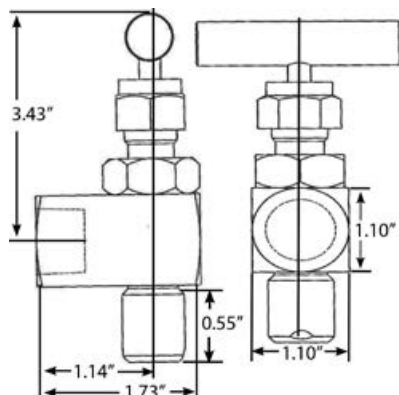


### Model Selection Guide

Inlet	Outlet	Seat	Packing	Carbon Steel		Stainless Steel	
				Catalog Number	Price	Catalog Number	Price
1/2" NPTF	Flanged	Integral	TFE	HM131S3399412	\$444.60	HM131U3399412	\$517.50
1/2" NPTF	Flanged	Integral	Graphite	HM131S3399413	447.30	HM131U3399413	520.20
1/2" NPTF	Flanged	TFE	TFE	HM132S3399262	495.00	HM132U3399262	630.00
Flanged	Flanged	Integral	TFE	HM141S9999412	358.20	HM141U9999412	427.50
Flanged	Flanged	Integral	Graphite	HM141S9999413	361.80	HM141U9999413	429.30
Flanged	Flanged	TFE	TFE	HM142S9999262	561.60	HM142U9999262	652.50



## Instrument Needle Valves *HN Series*



### HN29 Soft Seat Mini Needle Valve

- Stainless steel body, Delrin soft seat, and Teflon packing
- Non-rotating tip provides tight repeatable shutoff without galling or cross-scoring that occurs on ball-type stems
- Small valve body design saves space and reduces costs
- Rated to 3000 PSIG at 100° F.

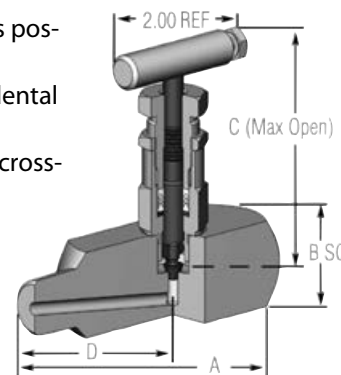
#### Model Selection Guide

Inlet	Outlet	Valve Cv	Orifice	Catalog Number	Price
1/4" NPTF	1/4" NPTF	0.15	0.13"	HN29-2F	\$61.20
1/4" NPTM	1/4" NPTM	0.15	0.13"	HN29-2M	70.20
1/4" NPTM	1/4" NPTF	0.15	0.13"	HN29-22MF	53.10



### HN49 Needle Valve with Integral Metal Seat

- Back-seated bonnets with packing below the stem threads eliminates possibility of threads contaminated by process media
- Metal-to-metal backseat minimizes fugitive emissions, prevents accidental removal, and stem blow-out during operation
- Non-rotating tip provides tight repeatable shutoff without galling or cross-scoring that occurs in ball-type stems
- Carbon steel models rated to 6580 PSIG @ 100° F, 5400 PSIG @ 650° F (450° F limit for Teflon packing); Stainless steel models rated to 6980 PSIG @ 100° F, 3525 PSIG @ 1000° F
- 10,000 PSIG bonnet assembly model available for high-pressure applications



#### Model Selection Guide — HN49 Needle Valve with Metal Seat

Connection		Packing	Dimensions				Carbon Steel Valves		Stainless Steel Valves	
Inlet	Outlet		A	B	C	D	Catalog Number	Price	Catalog Number	Price
1/4" NPTM	1/4" NPTF	Teflon	2.50"	1.25"	3.39"	1.50"	HN491S1111412	\$144.90	HN491U1111412	\$154.80
1/4" NPTF	1/4" NPTF		2.00"	1.25"	3.39"	1.13"	HN491S1311412	138.60	HN491U1311412	150.30
1/2" NPTM	1/2" NPTF		3.25"	1.25"	3.52"	1.75"	HN491S3131412	140.40	HN491U3131412	154.80
1/2" NPTF	1/2" NPTF		3.25"	1.25"	3.52"	1.75"	HN491S3331412	138.60	HN491U3331412	150.30
3/4" NPTM	3/4" NPTF		3.00"	1.50"	3.77"	1.56"	HN491S4141412	168.30	HN491U4141412	190.80
3/4" NPTF	3/4" NPTF		3.00"	1.75"	3.77"	1.50"	HN491S4341412	168.30	HN491U4341412	190.80
1" NPTM	1" NPTF		4.00"	2.00"	4.02"	2.25"	HN491S5151412	177.30	HN491U5151412	208.80
1" NPTF	1" NPTF		3.50"	2.00"	4.02"	1.75"	HN491S5351412	177.30	HN491U5351412	258.30
1/4" NPTM	1/4" NPTF	Grafoil	2.50"	1.25"	3.39"	1.50"	HN491S1111413	145.80	HN491U1111413	157.50
1/4" NPTF	1/4" NPTF		2.00"	1.25"	3.39"	1.13"	HN491S1311413	140.40	HN491U1311413	153.00
1/2" NPTM	1/2" NPTF		3.25"	1.25"	3.52"	1.75"	HN491S3131413	143.10	HN491U3131413	157.50
1/2" NPTF	1/2" NPTF		3.25"	1.25"	3.52"	1.75"	HN491S3331413	140.40	HN491U3331413	152.10
3/4" NPTM	3/4" NPTF		3.00"	1.50"	3.77"	1.56"	HN491S4141413	171.00	HN491U4141413	193.50
3/4" NPTF	3/4" NPTF		3.00"	1.75"	3.77"	1.50"	HN491S4341413	171.00	HN491U4341413	193.50
1" NPTF	1" NPTF		3.50"	2.00"	4.02"	1.75"	HN491S5351413	171.00	HN491U5351413	260.10

**Call for HN49 valves with soft seat, and in Monel, Alloy 20, NACE-approved carbon or stainless steel, and Hastelloy B or C.**



Illinois, Indiana, Missouri, and Iowa  
Phone: 800-953-7626 • 630-595-8400  
Fax: 630-595-2386

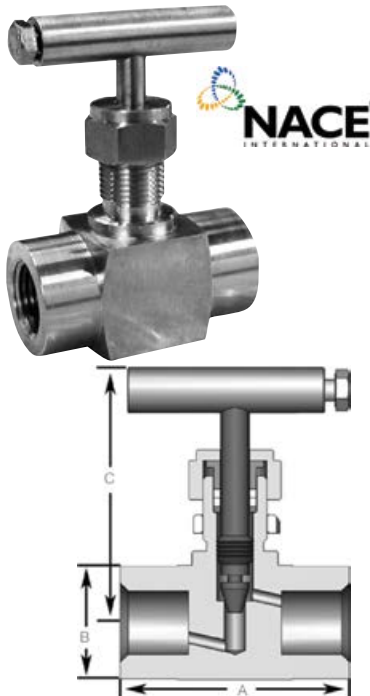
**Lesman Instrument Company**  
[www.lesman.com](http://www.lesman.com)  
[sales@lesman.com](mailto:sales@lesman.com)

Wisconsin, and Upper Peninsula Michigan  
Phone: 800-837-1700 • 262-923-1790  
Fax: 262-923-1797

V 01.2019

**NEEDLE  
VALVES**

**347** **L**

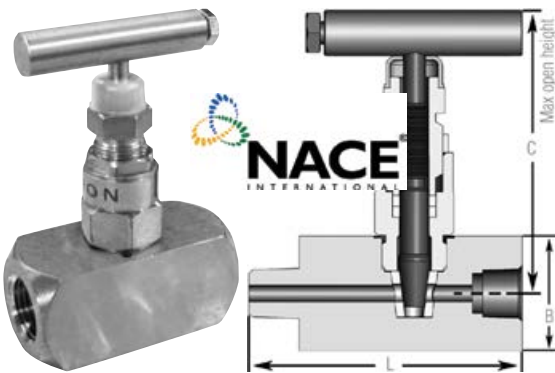


## HN39 Stainless Steel Block Valves for High Pressures

- 316-NACE stainless steel body and trim, integral metal seat, and Teflon packing
- Rated to 6000 PSIG @ 100° F. For process temperatures in excess of 450° F, use Grafoil packing
- Bonnet threads above the stem packing eliminates possibility of thread contamination by process media
- Non-rotating tip provides tight, repeatable shutoff without galling or cross-scoring that occurs in ball-type stems

### Model Selection Guide

Inlet	Outlet	Seat	Packing	Dimensions				Catalog Number	Price
				A	B	C	Orifice		
1/8" NPTM 1/8" NPTF	1/8" NPTM 1/8" NPTF	Integral	Teflon	2.00"	0.88"	2.63"	0.12"	HN39M-1 HN39F-1	\$55.80 55.80
1/4" NPTM 1/4" NPTF	1/4" NPTM 1/4" NPTF			2.00"	0.88"	2.63"	0.18"	HN39M-2 HN39F-2	55.80 55.80
3/8" NPTM 3/8" NPTF	3/8" NPTM 3/8" NPTF			2.50"	1.25"	3.50"	0.24"	HN39M-3 HN39F-3	81.00 81.00
1/2" NPTM 1/2" NPTF	1/2" NPTM 1/2" NPTF			2.50"	1.25"	3.50"	0.24"	HN39M-4 HN39F-4	81.00 81.00
3/4" NPTM 3/4" NPTF	3/4" NPTM 3/4" NPTF			2.63"	1.38"	3.75"	0.39"	HN39M-6 HN39F-6	110.70 110.70
1" NPTF	1" NPTF			2.63"	1.38"	3.75"	0.39"	HN39F-8	124.20

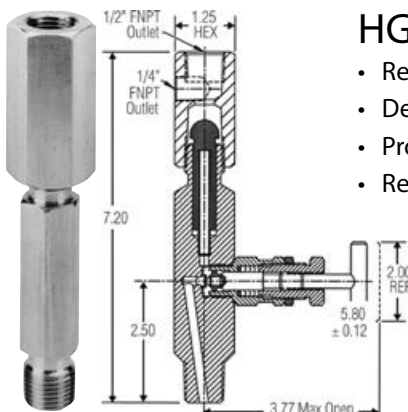


## HN41 Roddable Needle Valves

- NACE MR-01-75 316 SS body and trim, Teflon packing, Delrin soft seat
- Straight-thru roddable for bidirectional flow and easy cleaning
- Rising plug design for better shut-off with a full bore valve
- Larger handle and stem diameter makes it withstand tough applications better than competitive units
- Rated to 6000 PSIG @ 200° F

### Model Selection Guide

Inlet	Outlet	Dimensions				Catalog Number	Price
		L	B	C	Orifice		
1/4" NPTF	1/4" NPTF	2.99"	2.05"	4.33"	0.37"	HN412D2F2C2	\$99.00
1/4" NPTF	1/4" NPTM	3.50"	1.65"	4.33"	0.37"	HN412D2FM2C2	99.00
1/2" NPTF	1/2" NPTF	2.99"	2.05"	4.33"	0.37"	HN412D4F2C2	79.20
1/2" NPTF	1/2" NPTM	3.50"	1.65"	4.33"	0.37"	HN412D4FM2C2	85.50



## HGVS Gauge Syphons for Steam and Heat-Transfer Media

- Reduces installation radius by up to 65% over conventional pigtail syphons
- Decrease system vibration issues: Minimizes deflection stress at the primary valve connection
- Provides a constant thermal barrier for high process temperatures or freeze-up conditions
- Reduces the number of threaded connections from four to two — minimizes leak points.

### Model Selection Guide

Inlet	Outlet	Seat	Packing	Carbon Steel		Stainless Steel	
				Catalog Number	Price	Catalog Number	Price
1/2" NPTM	1/2" NPTF	Integral	Graphite	HGVS1S3131413	\$263.70	HGVS1U3131413	\$310.50
1/2" NPTM	1/2" NPTF	Integral	TFE	—	—	HGVS1U3131412	307.80

## Specialty Valves *HS Series*



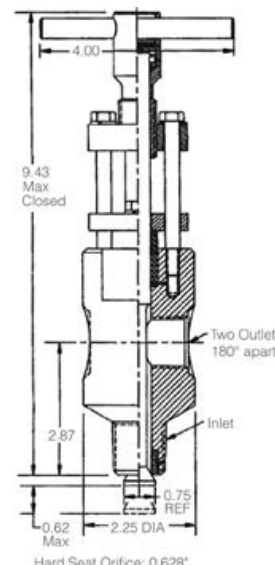
### HS31 Sample & Tank Bottom Drain Valves

- Extract a fresh sample while providing tight shutoff and high pressure and temperature capabilities
- For difficult fluid sampling applications: slurries, viscous liquids, and media that may solidify when cooled or exposed to the atmosphere
- Two outlet ports standard: Thread a sample cylinder, tube fitting, or piping into one, attach a check valve, bleed valve, cleanout, or purging connection to the other

#### Model Selection Guide

Inlet	Two Outlets	Seat	Packing	Carbon Steel		Stainless Steel	
				Catalog Number	Price	Catalog Number	Price
1" NPTM	1/2" x 1/2" NPTF	Integral	TFE	HS311S5131212	\$720.00	HS311U5131212	\$911.70
1" NPTM	1/2" x 1/2" NPTF	Integral	Graphite	HS311S5131213	722.70	HS311U5131213	913.50
1" NPTM	1/2" x 3/4" NPTF	Integral	TFE	HS311S5191212	728.10	HS311U5191212	922.50
1" NPTM	1/2" x 3/4" NPTF	Integral	Graphite	HS311S5191213	731.70	HS311U5191213	924.30

Also available with soft seat. Optional barstock bodies in Monel, Alloy 20, Hastelloy B or C. Call for pricing.



## Power Valves (Made to ANSI B31.1/B31.3 Spec) *PG Series*



### PG48 Gauge and Block Valves

- 100% hydro-tested to ANSI B31.1 standard before shipping
- Compact installation with minimal leak points
- Includes a backseated screwed bonnet, with safety clamp standard to prevent loosening

#### Model Selection Guide

Inlet	Outlet	Seat	Packing	Carbon Steel		Stainless Steel	
				Catalog Number	Price	Catalog Number	Price
1/2" NPTM	1/2" NPTF	Integral	Graphite	—	—	PG481U3131413	\$370.80
1/2" NPTM	1/2" NPTF	TFE (Soft)	TFE	PG482P3131412	\$364.50	PG482U3131262	415.80
3/4" NPTM	1/2" NPTF	Integral	Graphite	PG481P4131413	348.30	PG481U4131413	382.50

### PG65 Orifice Block Valves

- Compliant to Power Standards ANSI B31.1 and B31.3 specifications
- 100% hydro-tested to ANSI B31.1 standard before shipping
- Designed for compact side-by-side mounting on orifice flanges and orifice settings
- Slim design enables mounting on 2-1/8" centers without staggering valves with unequal length nipples
- Two outlet ports standard for use as impulse line connections, pressure or level gauge mounts
- VOC emission compliant: TFE-Chevron and Grafoil packing certified to meet and exceed 100 ppm EPA 1998 emission standards

#### Model Selection Guide

Inlet	Outlet	Seat	Packing	Carbon Steel		Stainless Steel	
				Catalog Number	Price	Catalog Number	Price
1/2" NPTM	1/2" NPTF	Integral	Graphite	PG651P3131413	\$539.10	PG651U3131413	\$609.30
1/2" NPTM	1/2" NPTF	Integral	TFE	—	—	PG651U3131412	607.50
3/4" NPTM	1/2" NPTF	Integral	Graphite	PG651P4131413	550.80	PG651U4131413	618.30

