

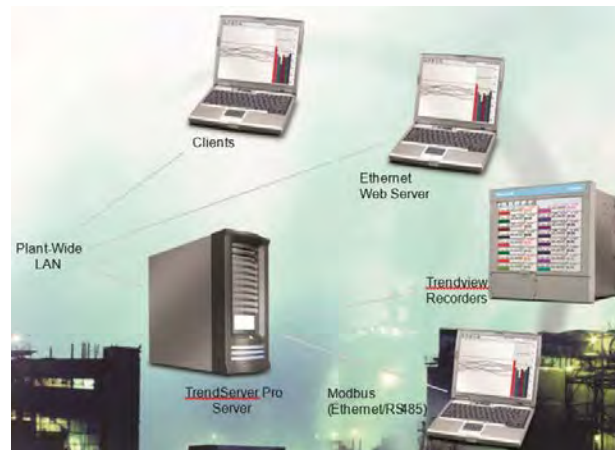


INSTRUMENTS • VALVES • CONTROLS

www.Lesman.com

800-953-7626

Simple Products for Remote Process Access



Providing Solutions to Detect, Measure, Analyze, and Control Your Process and Your Facility.

Honeywell TrendView

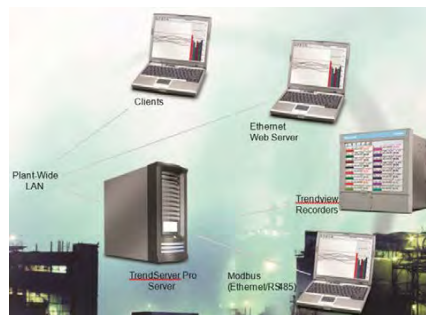


Reliable Data and Process Monitoring



- Supports standard Ethernet for easy connectivity
- Web access via Remote Display tool for viewing and navigating all recorder screens.
- File Transfer Protocol (FTP) for efficient data uploads
- OPC Server for easy connectivity to any OPC client
- **Data archived in software database for added security**
- Export data to spreadsheet for additional data analysis using standard tools

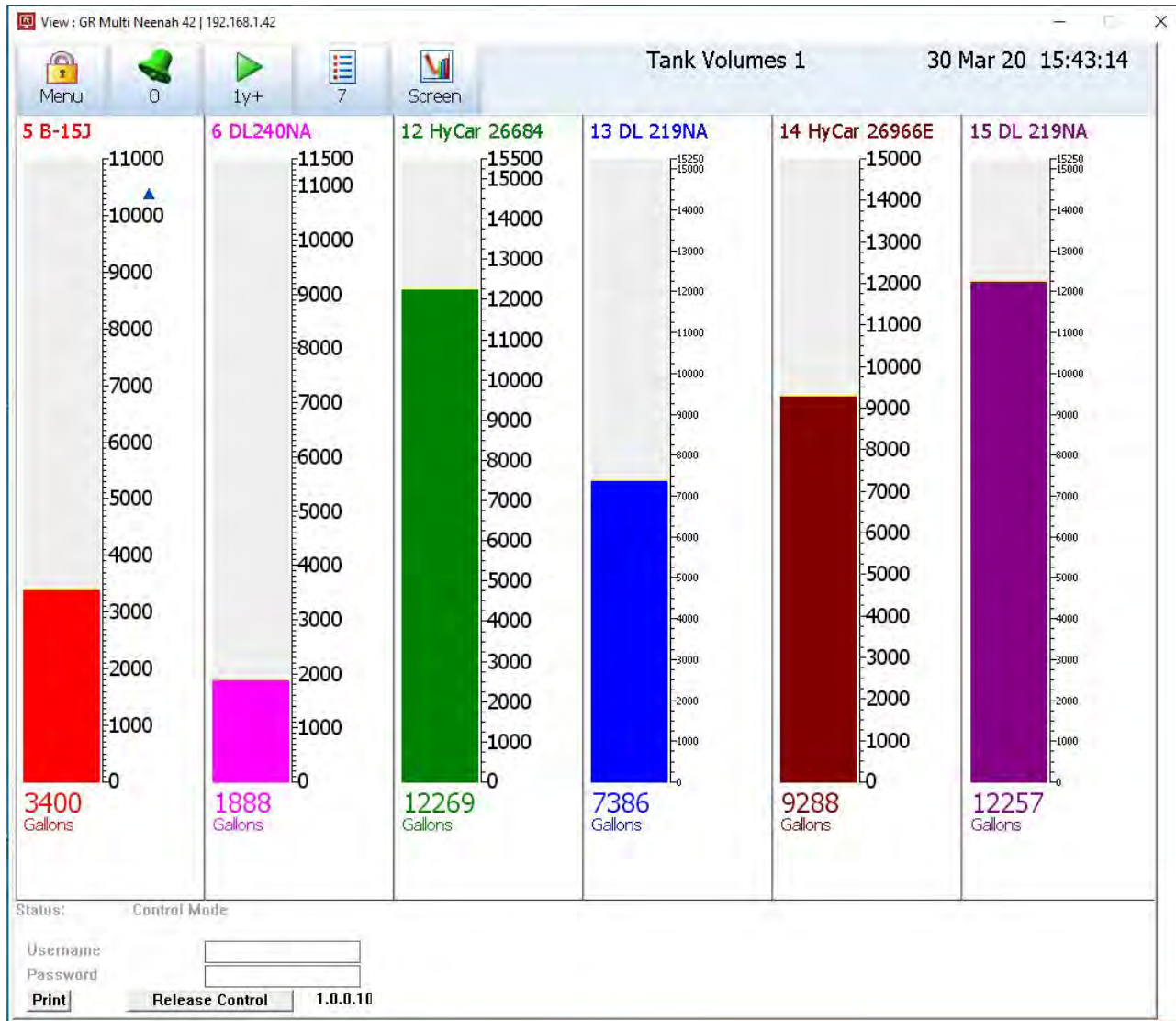
Security is a top consideration

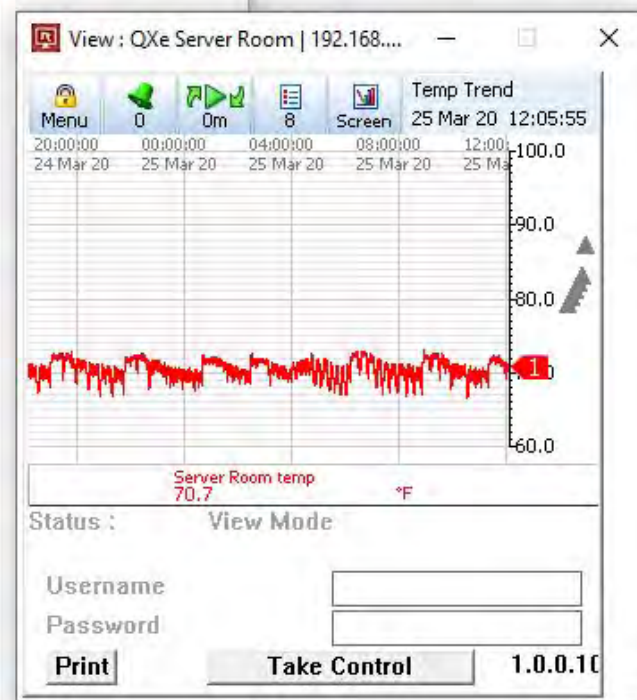
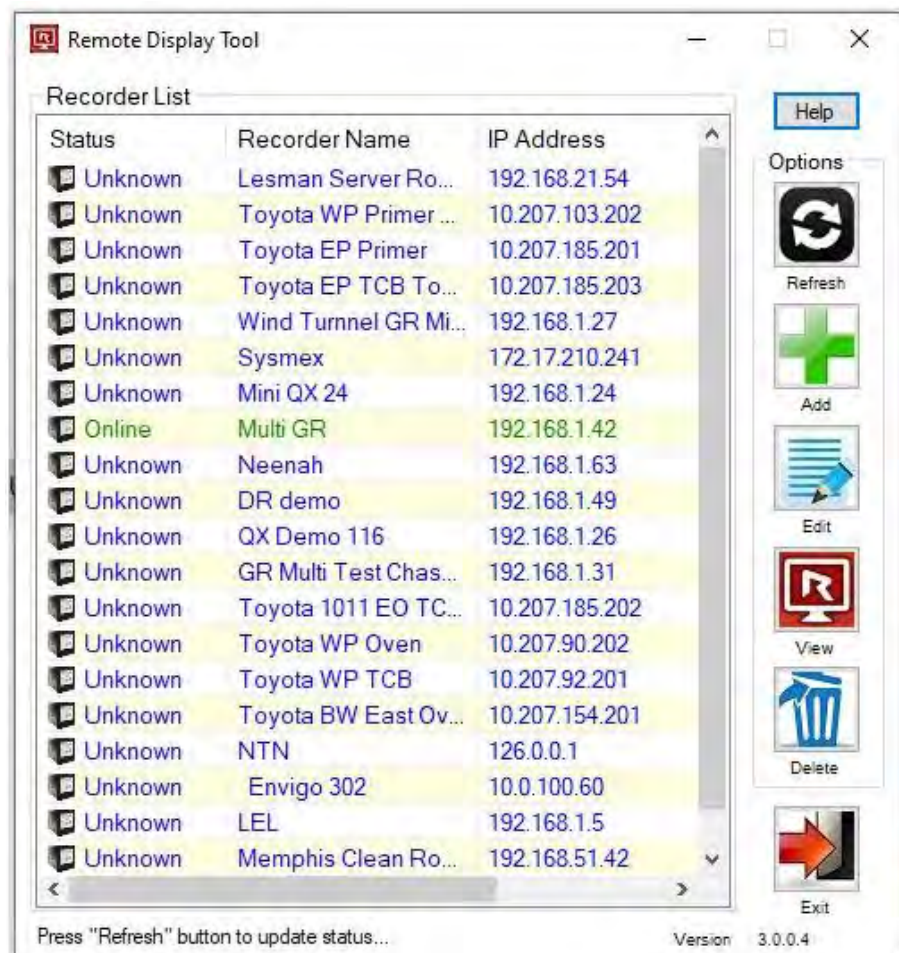
- Password management system ensures secure user access for up to 50 users
- Encrypted secure data file protection protects against data tampering, provides compliant data
- Audit trail of actions provides documentation for compliance with 21 CFR Part 11
- Secure download protects against unauthorized data access and transfers
- Tamper proof seals and configuration lock-out protects against unauthorized recorder access



Choosing the Right Honeywell GR Advanced Paperless Recorder

Honeywell				
	eZtrend GR	Minitrend GR	Multitrend GR	DR Graphic
Display	5.7" Color LCD	5.7" Color LCD	12.1" Color LCD	12.1" Color LCD
Inputs	Up to 12 Input Channels	Up to 16 Input Channels	Up to 48 Input Channels	Up to 16 Input Channels
Scan Time	100 to 500 mSec	100 mSec Standard, 20 mSec Linear Input Optional		
Discrete I/O	Up to 8	Up to 16	Up to 48	Up to 16
Auxiliary Output	None	Up to 4	Up to 8	Up to 4
Data Storage	1GB to 2GB Internal Storage, Removable 8GB SD Card Memory	1GB to 4GB Internal Storage, Removable 8GB SD Card Memory		
Data Security	21 CFR Part 11 Password Protection Extended Security System			
Networking	Ethernet, Standard OPC Server Optional	Ethernet, RS-485 Standard, OPC Server Optional		
Communications	TrendServer Pro , Ethernet, Modbus, Trendbus	TrendServer Pro , RS485, Ethernet, Barcode, Profibus, Modbus	TrendServer Pro , RS485, Ethernet, Barcode, Profibus, Modbus	TrendServer Pro , RS485, Ethernet, Barcode, Profibus, Modbus
Analysis Software	TrendManager Pro			
Event Recording*	Event Markers (Requires firmware credits.)			
Displays	Standard Screens Only	Customizable via Screen Designer Software		
Instrument Depth	7.87"	7.87"	9.72"	5.1"
Approvals				



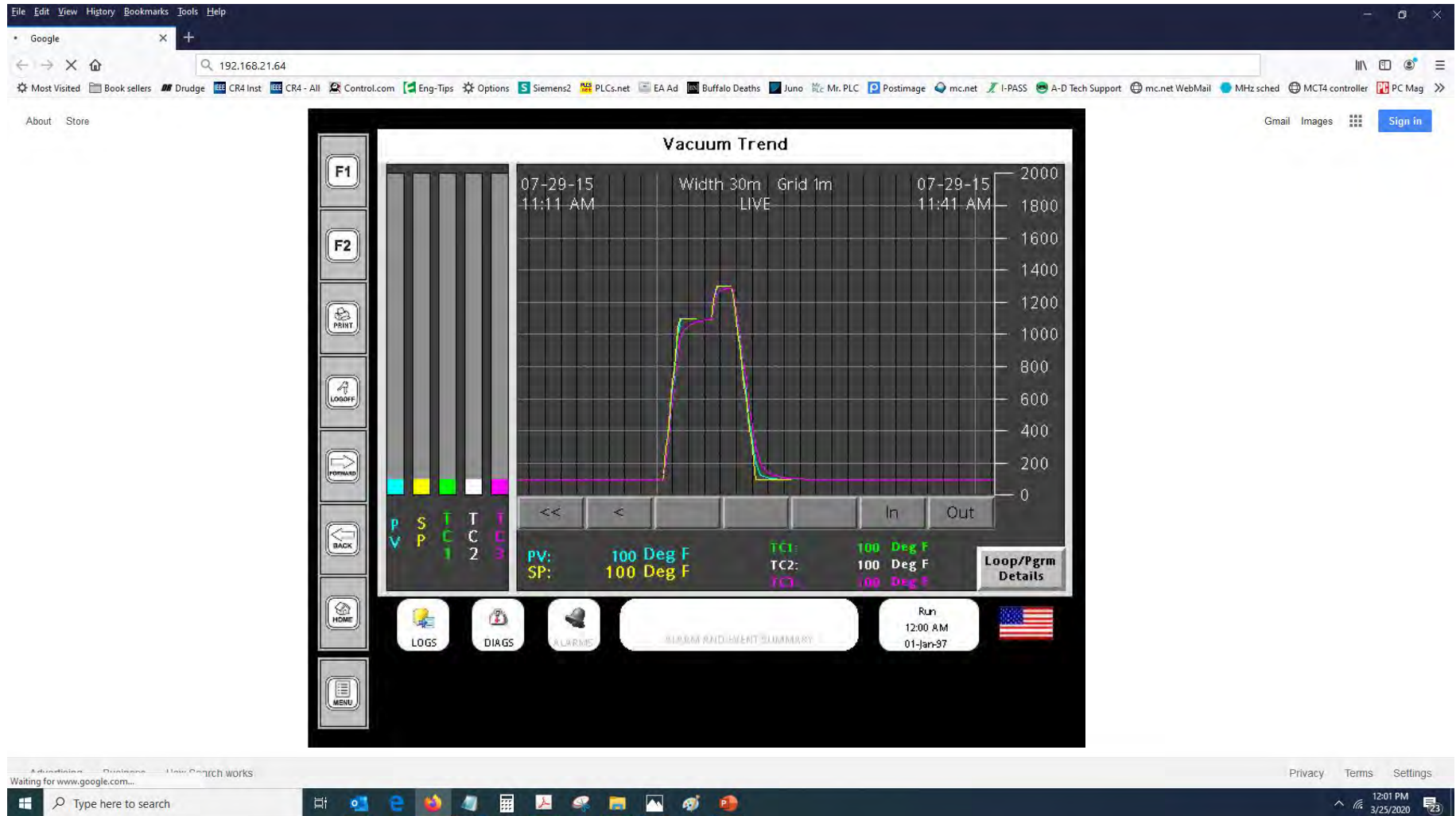


Honeywell HC900 Control Station



- View 900 Control Station HMI displays on your PC Web browser anywhere around the world.
- Allow user actions to change displays, enter values and **access** log data.
- Use IP data, IP mask and password security to prevent unauthorized access.
- Have the Station HMI serve custom HTML pages built using commercially available HTML editors.
- Alarms can be configured to send an email to an individual or group when an alarm is present. You can also send event messages.
- Access data logs on the Station HIM through its on-board FTP server.

Honeywell HC900 Control Station



Cloud based data access for combustion burner controllers



Honeywell Thermal IQ Remote Monitoring Solution

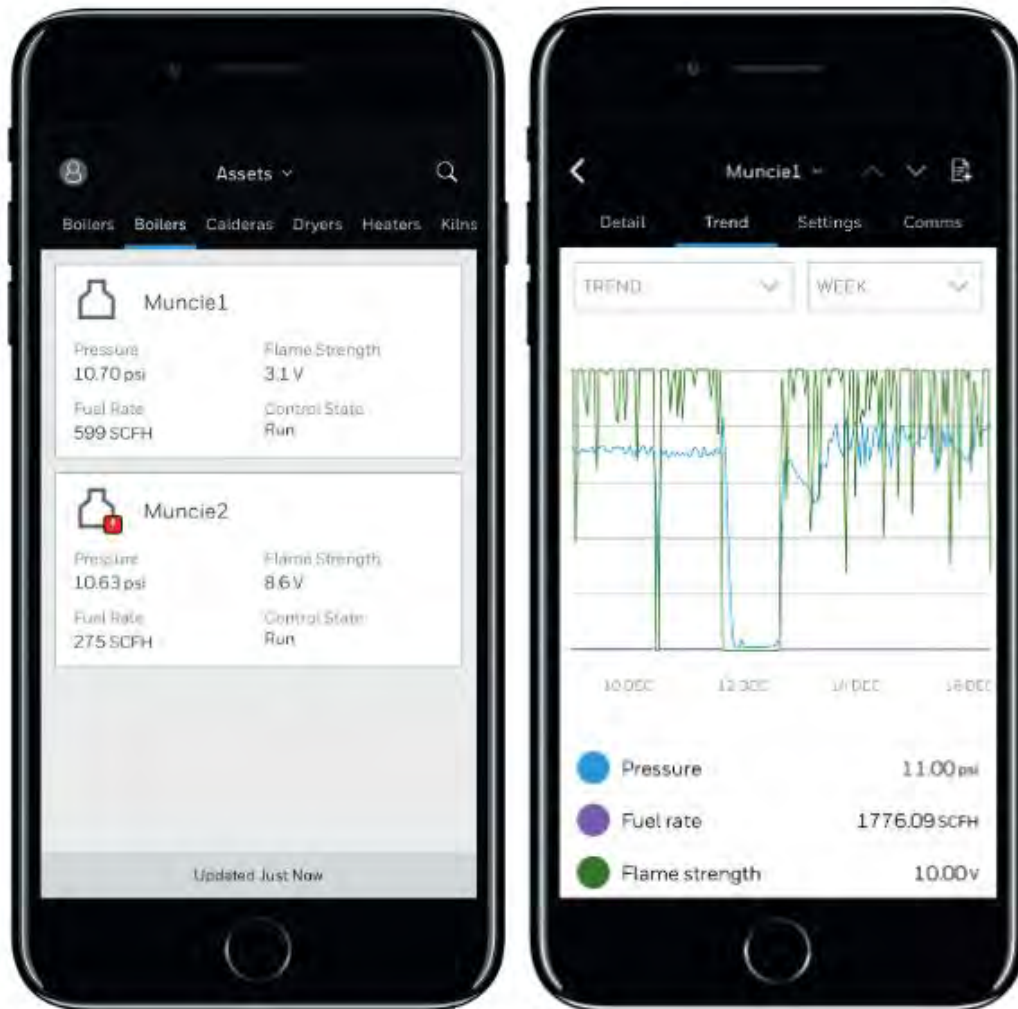
Honeywell Thermal IQ remote monitoring solution securely connects your combustion equipment to the cloud, making critical thermal process data available anytime, anywhere, on any smart device.

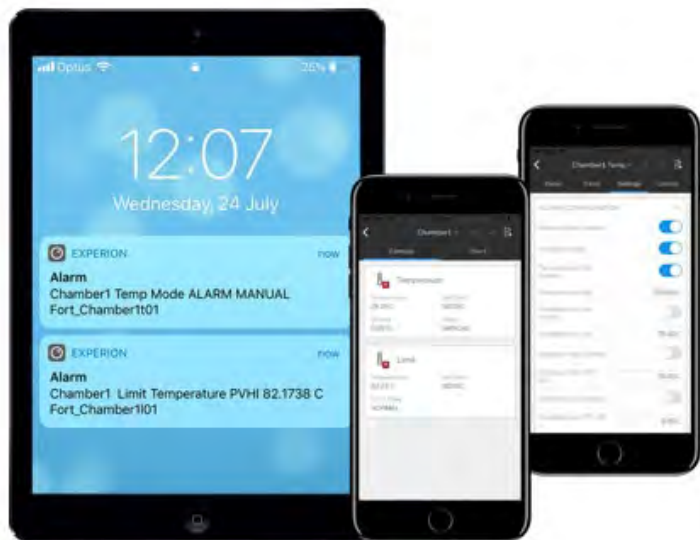
With real-time alerts and notifications, you can be prepared to troubleshoot the problems that lead to process disruptions, unplanned downtime, and lost profits. You'll be able to diagnose issues remotely and arrive at the machine with the right tools and knowledge for a faster fix — so your system stays up and optimized.

Key Specifications

- View critical combustion information without being at the control panel
- Cloud Link modem is required to connect devices to Thermal IQ
- Compatible with Honeywell Slate integrated combustion management system, Honeywell 7800 series flame safeguard, Honeywell UDC controller, Kromschroder BCU4 flame safeguard, Kromschroder FCU 500 burner control, and Honeywell SV2 Series shutoff valves

Honeywell Thermal IQ





Cloud based data access for UDC PID controllers

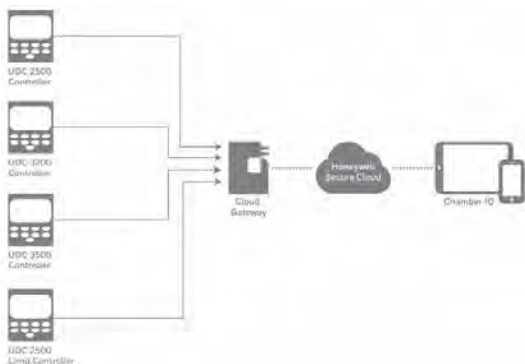
Honeywell Chamber IQ Remote Monitoring Solution

Honeywell Chamber IQ remote monitoring solution securely connects your Honeywell UDC series of controllers to the cloud, making critical process data from your heat treat chambers available anytime, anywhere, on any smart device.

With real-time alerts and notifications, you can be prepared to troubleshoot the problems leading to process disruptions, unplanned downtime, and lost profits. You'll be able to diagnose issues remotely and arrive at the furnace with the right tools and knowledge for a faster fix – to help you stay up and optimized.

Key Specifications

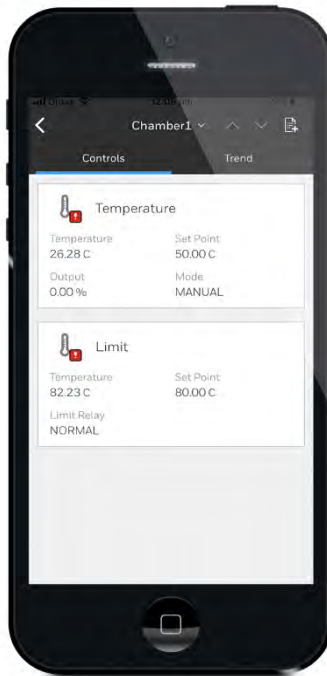
- View critical furnace information right from your smart device
- Cloud Link modem is required to connect devices to Chamber IQ
- Compatible with and Honeywell UDC Controllers models 2500, 2500L (limit controllers), 3200 or single loop 3500 with RS-485 Modbus (requires Modbus card 51452810-501)



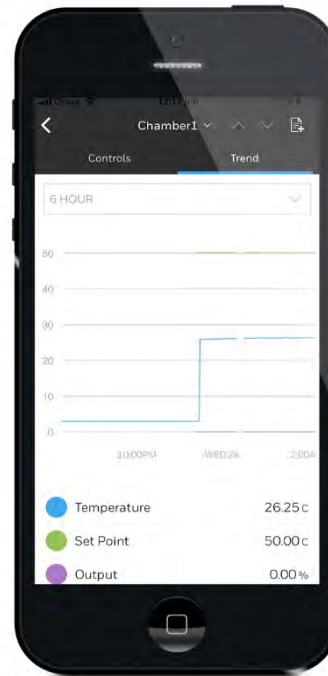
Honeywell Chamber IQ



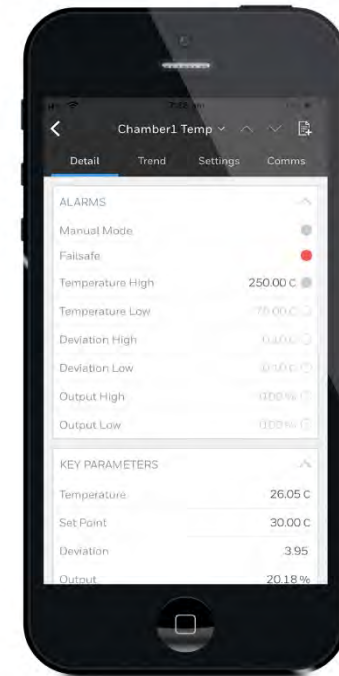
Chamber Control



Historical Trend



Control Detail

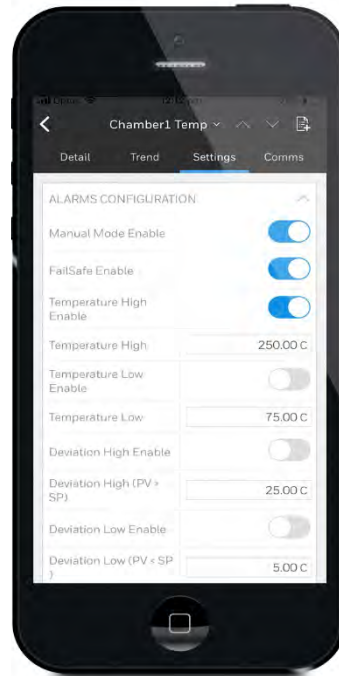


Honeywell Chamber IQ

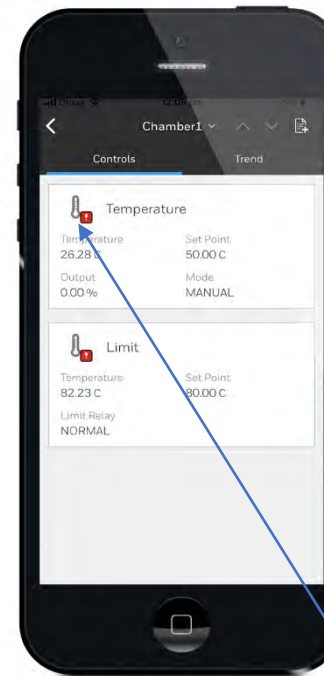
Notifications



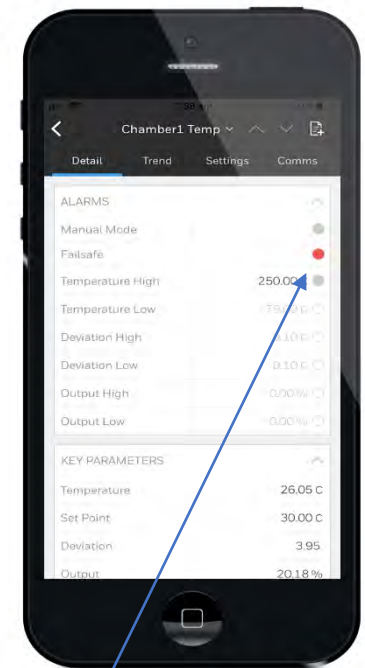
Alarm Settings



Control Screen Alarm Icon



Detail Screen Alarm



**Red icon
indicates
presence of active alarm**

Honeywell Chamber IQ

1



Add RS485 Board if Needed

2



Data Plan



Modem in
Composite Case

Or



Modem On
DIN Rail



24 VDC
Power Supply

3



Experion
Mobile Device
App

+ web/cell subscription

Water Analytics AM-2300



Features

- Inputs for four 4-20 mA sensors of any kind in any combination: pH, ORP, conductivity, dissolved O₂, Chlorine, level, pressure, and more
- Inputs for three frequency or pulse counters, including flow sensors
- Outputs of four relays programmable for any of the inputs
- Alarm notifications by e-mail, text, and/or display for each input
- 100% web enabled from set-up to data collection to remote viewing with password protection
- Perform differential measurement from two analog inputs
- Data logging, logs are downloadable from web
- 1/4 DIN panel mounted enclosure with adapter for wall mounting
- Three levels of security to allow the appropriate access to personnel

Water Analytics AM-2300



Controller on the top, handheld on the bottom