

# PRIMARY CALIBRATORS MODELS 4046 AND 4146

ROUTINE CALIBRATION  
FOR ASSURED ACCURACY

Personal sampling pumps are key tools for exposure assessment. The accuracy sampling of the pumps depends on how much air passes through the sampling media as well as good laboratory analysis. As a common practice, sampling pumps should be calibrated before and rechecked after sampling using a calibration device.



TSI offers two Primary Calibrator Models for calibrating pumps and any other air sampling instruments that draw an active air sample. These small, portable, battery-operated units are lightweight and easy to use. Volumetric flow rate is displayed continuously, making real-time pump adjustment, calibration and periodic flow checks fast and easy. These Primary Calibrators are temperature-compensated and pressure-corrected to calculate volumetric flow rate at an accuracy within 2% of reading.

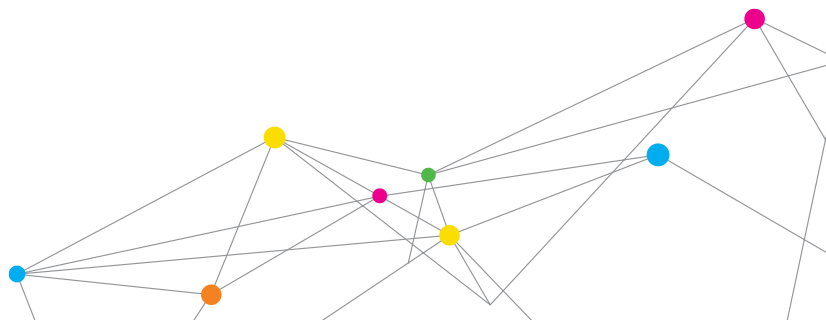
Primary calibrator kits are available with a soft-sided carrying case, battery pack, tubing, user guide and NIST-traceable calibration certificate.

## Features and Benefits

- + Provides continuous real-time volumetric flow rate readings, so pump adjustment and calibration is fast and easy
- + Battery powered, compact and lightweight
- + Field portable—use the same primary calibrator for adjustment, calibration and periodic checks
- + Comes with a NIST traceable calibration certificate
- + Kits come complete and are ready to use



UNDERSTANDING, ACCELERATED



## SPECIFICATIONS

### PRIMARY CALIBRATORS MODELS 4046 AND 4146

#### Flow Measurement Range

Model 4146	0.01 to 20 lpm
Model 4046	2.5 to 300 lpm

#### Accuracy

Model 4146	±2% or 0.005 std. lpm, whichever is greater
Model 4046	±2% or 0.05 std. lpm, whichever is greater

#### Dimensions (H x W x D)

Model 4146	5 in. x 2 in. x 1.25 in. (12.7 cm x 5 cm x 3.2 cm)
Model 4046	7.2 in. x 2.5 in. x 2.1 in. (18.3 cm x 6.4 cm x 5.3 cm)

#### Shipping Weight

Model 4146	2.2 lbs (1.0 kg)
Model 4046	3.0 lbs (1.1 kg)

#### Warm-up Time

1 min

#### DC Power Input

7.5 VDC ±1.5 V, 300 mA max

Specifications are subject to change without notice.

TSI and the TSI logo are registered trademarks of TSI Incorporated.



UNDERSTANDING, ACCELERATED

**TSI Incorporated** - Visit our website [www.tsi.com](http://www.tsi.com) for more information.

<b>USA</b>	<b>Tel:</b> +1 800 874 2811	<b>India</b>	<b>Tel:</b> +91 80 67877200
<b>UK</b>	<b>Tel:</b> +44 149 4 459200	<b>China</b>	<b>Tel:</b> +86 10 8251 6588
<b>France</b>	<b>Tel:</b> +33 4 91 11 87 64	<b>Singapore</b>	<b>Tel:</b> +65 6595 6388
<b>Germany</b>	<b>Tel:</b> +49 241 523030		