

LOFLO BALOMETER® CAPTURE HOODS MODELS 6200, 6200D, 6200E, AND 6200F

The LoFlo Balometer® Capture Hood is the ideal way to measure very low volumetric flow. Measure (supply or return flows) confidently and accurately from 10 to 500 cfm (17 to 850 m³/h). This light weight instrument is great for residential or light commercial use. Easily observed trend values and fast meter response make the LoFlo Balometer® Capture Hood the preferred tool of residential air balancers.

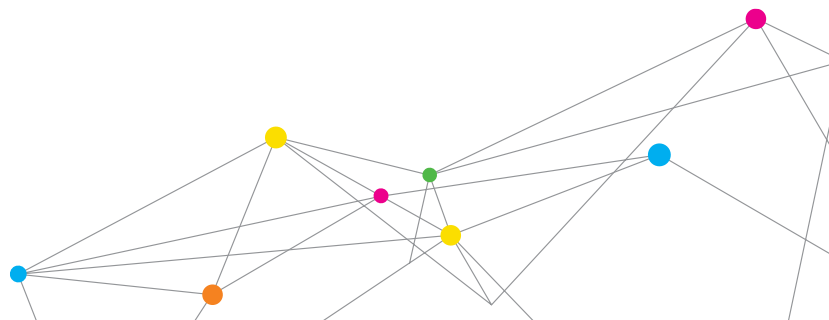


Model 6200D with display detail

Features and Benefits

(Models 6200, 6200D, 6200E, and 6200F)

- + Uses 4 C-size alkaline batteries
- + Weighs only 6.5 lb (3 kg) with 2 ft x 2 ft (610 mm x 610 mm) hood attached
- + Simulated analog display shows air trends and digital readings
- + Backpressure compensation
- + Use with or without a hood



SPECIFICATIONS

LOFLO BALOMETER® CAPTURE HOODS MODELS 6200, 6200D, 6200E, and 6200F

Range

10 to 500 cfm (17 to 850 m³/h) (4.7 to 236 l/s)

Accuracy

±(3% + 5 cfm) [±(3% + 8.5 m³/h, 2.4 l/s)]

Height

Model 6200	22 in. (559 mm)
Model 6200D	34.5 in. (876 mm)
Model 6200E or base only	
	15.5 in. (394 mm)
Model 6200F	32 in. (813 mm)

Weight

About 6 lbs (2.7 kg) with hood
4.6 lbs (2.1 kg) base only

Base Diameter

Opening	13.3 in. (338 mm) diameter
Hood sizes	16 in. x 16 in., 2 ft x 2 ft, or 26 in. x 26 in. (406 mm x 406 mm, 610 mm x 610 mm, or 650 mm x 650 mm)
Display	3.5 digit, .44 in. (11 mm) high, digital display with 26 segment simulated analog display
Resolution	1 cfm from 10 to 500 cfm (0.1 l/s from 4.7 to 9.9) (1 l/s from 10 to 236 l/s)

Power Source

4C 1.5V alkaline batteries

Battery Life

10 hrs. minimum with continuous use

Model Description

Model 6200	with 16 in. x 16 in. (406 mm x 406 mm), 8 in. (200 mm) tall hood
Model 6200D	with 2 ft x 2 ft (610 mm x 610 mm) hood
Model 6200E	with base only, metric
Model 6200F	with 16 in. x 16 in. (406 mm x 406 mm), 18 in. (457 mm) tall hood

Optional Accessories

634620110	2 ft x 2 ft (610 mm x 610 mm) hood and frame kit
634620085	16 in. x 16 in. (406 mm x 406 mm), 18 in. (457 mm) tall hood and frame kit
634620120	16 in. x 16 in. (406 mm x 406 mm), 8 in. (200 mm) tall hood and frame kit
634620130	26 in. x 26 in. (650 mm x 650 mm) hood and frame kit



The LoFlo Balometer® Capture Hood is mainly used in residential or light commercial applications for taking measurements from 10 to 500 cfm (17 to 850 m³/h). The compact size allows them to be used where full size hoods would not fit such as over bathroom stalls or filing cabinets.

Specifications subject to change without notice.

Alnor, Balometer, TSI, and the TSI logo, are registered trademarks of TSI Incorporated.

U.S. Patent 4,548,076



Alnor Products, TSI Incorporated

Visit our website at www.alnor.com for more information.

USA	Tel: +1 800 874 2811	China	Tel: +86 10 8219 7688
India	Tel: +91 80 67877200	Singapore	Tel: +65 6595 6388