

# ROTATING VANE ANEMOMETERS MODELS RVA501 AND RVA801

## Model RVA501

Model RVA501 is a handheld digital Rotating Vane Anemometer used for air velocity and volumetric flow measurements.

## Model RVA801

Model RVA801 is a lightweight, robust, and simple to use Rotating Vane Anemometer that provides accurate and reliable readings every time. Ideal for HVAC commissioning at grilles, filters, and kitchen exhausts; the RVA801 displays readings in metric or imperial mode.

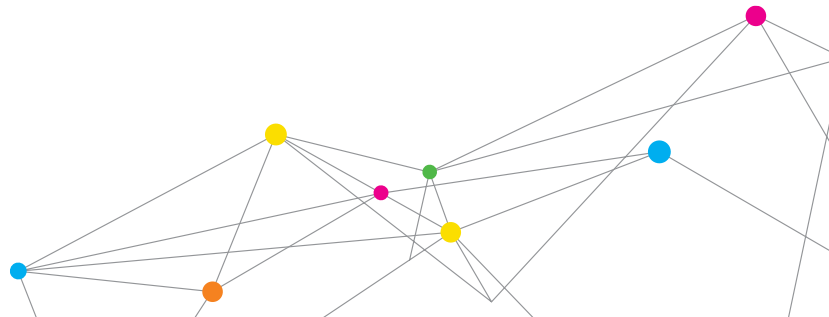


## Features and Benefits (Model RVA801)

- + Reversible 4-in. (100-mm) head allows readings at supply and exhaust grilles
- + Calculates volumetric flow rate
- + Compatible with Aircone Flow Hoods
- + No density correction factors required
- + Automatic averaging of air velocity

## Features and Benefits (Model RVA501)

- + Measures velocity and temperature
- + Calculates flow
- + Simultaneous display of up to three measurements
- + Log, store, and recall data
- + Download data to a PC
- + Optional telescopic probe available
- + Compatible with Aircone Flow Hoods



## SPECIFICATIONS

### ROTATING VANE ANEMOMETERS MODELS RVA501 AND RVA801

#### Velocity

Range 50 to 6,000 ft/min (0.25 to 30 m/s)  
Accuracy  $\pm 1.0\%$  of reading  $\pm 4$  ft/min ( $\pm 0.02$  m/s)

#### Area Size Input

Range  
RVA501 0 to 500 ft<sup>2</sup> (0 to 46.45 m<sup>2</sup>)  
RVA801 0.043 to 900 ft<sup>2</sup> (0.00399 to 90 m<sup>2</sup>)

#### Volumetric Flow Rate

Range Actual range is a function of velocity and area

#### Temperature

Range 40 to 113°F (5 to 45°C)  
Accuracy  $\pm 2.0^\circ\text{F}$  ( $\pm 1.0^\circ\text{C}$ )  
Resolution RVA501 0.1°F (0.1°C)  
Resolution RVA801 1°F (0.1°C)

#### Instrument Temperature Range

Operating  
(Electronics) 40 to 113°F (5 to 45°C)  
Storage -4 to 140°F (-20 to 60°C)

#### Data Storage Capabilities (RVA501 only)

Range 12,700+ samples and 100 test IDs

#### Logging Interval (RVA501 only)

From 1 second to 1 hour

#### Time Constant (RVA501 only)

User selectable

#### External Meter Dimensions

RVA501 3.3 in. x 7.0 in. x 1.8 in.  
(8.4 cm x 17.8 cm x 4.4 cm)  
RVA801 4.5 in. x 11 in. x 2.6 in.  
(1.2 cm x 28 cm x 6.5 cm)

#### Meter Weight with Batteries

RVA801 11.6 oz. (329 g)  
RVA501 0.6 lbs. (0.27 kg)

#### Power Requirements

RVA801 9-volt battery  
RVA501 Four AA-size batteries or AC adapter

## AIRCONE FLOW HOODS

Aircone Flow Hoods are a fast and accurate method of maximizing the usefulness of your 4-in. (100 mm) rotating vane anemometers. For a modest investment, you can enhance the capability of your rotating vane, turning it into an air volume flow balancing tool.



#### Features and Benefits

- + Rectangular and circular cones available
- + Measures volumetric flow at small grilles and diffusers
- + Reads air volume quickly and accurately

#### Specifications

Aircone Flow Hoods (P/N 801750)

#### Range (with RVA501 or RVA801)

0 to 210 cfm (0 to 100 l/s, 0 to 360 m<sup>3</sup>/h)

#### Size

Rectangular Hood 11.2 in. x 9.2 in. (285 mm x 235 mm)  
Round Hood 7.1 in. (180 mm) diameter

#### Weight (includes case)

2.4 lbs (1.1 kg)

	RVA801	RVA501
Temperature	+	+
Velocity	+	+
4-in. (100-mm) reversible head	+	+
Flow	+	+
Telescoping handle (optional)		+
Data logging, recall, review, download		+
Use with Aircone flow hoods	+	+
Certificate of Calibration	+	+

Alnor, TSI, and the TSI logo are registered trademarks of TSI Incorporated.

Specifications subject to change without notice.



#### Alnor Products, TSI Incorporated

Visit our website at [www.alnor.com](http://www.alnor.com) for more information.

USA India Tel: +1 800 874 2811 Tel: +91 80 67877200 China Singapore Tel: +86 10 8219 7688 Tel: +65 6595 6388