

PanaFlow Z1G/Z2G

Quick-start guide

Installation instructions

(see other side for electrical wiring and programming instructions)

1. Local mount PanaFlow Z1G/Z2G

Remove the components from the shipping container. The typical PanaFlow Z1G/Z2G system shown in Figure 1 includes the following items:

- 1 Meter body with flanges (material list WCB: LCB: CF8M: CD3MWCuN)
- 2 Transmitter electronics
- 3 Magnetic stylus (for transmitter keypad)
- 4 Mounting adapter, transmitter (for local mount only)
- 5 Transducers/inserts

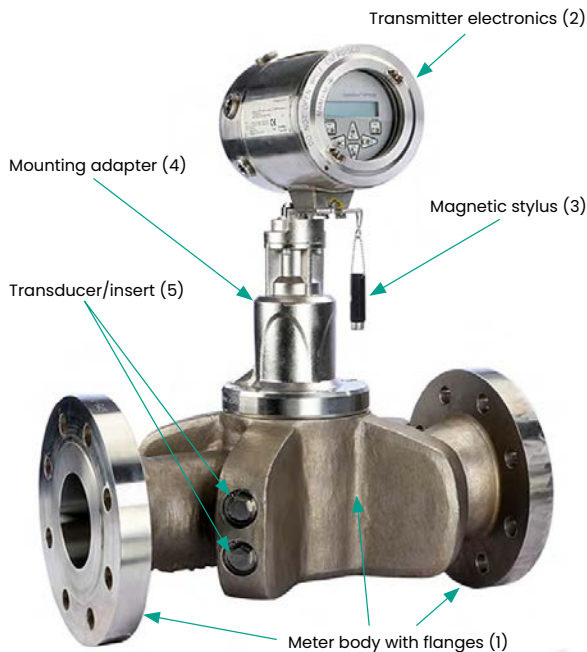


Figure 1: Local mount PanaFlow Z1G/Z2G process gas flow meter assembly

Note: For electrical connections information see "Making the electrical connections: on page 2.

2. Remote mount PanaFlow Z1G/Z2G

The typical remote PanaFlow Z1G/Z2G system shown in Figure 2 includes the following items:

- 1 Meter body with flanges (material list WCB: CF8M: CD3MWCuN)
- 2 XGM868i electronics
- 3 Electronics mounting bracket
- 4 Remote mount adapter
- 5 Haz. area certified remote cable
- 6 Combined pressure and temperature sensors (optional)

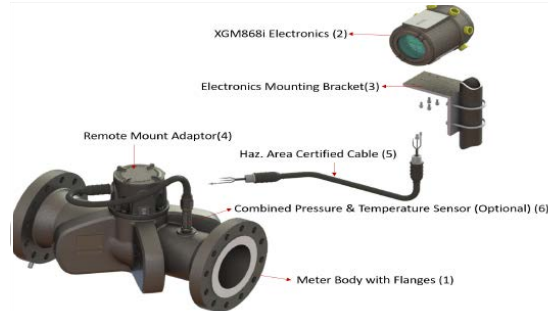


Figure 2: Remote mount PanaFlow Z1G/Z2G

3. Remove mount connection between FlowCell and electronics

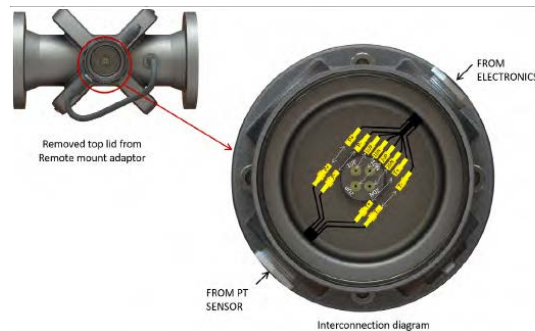


Figure 3: Remote mount wiring options

3.1 Wiring configuration options with/without preamp

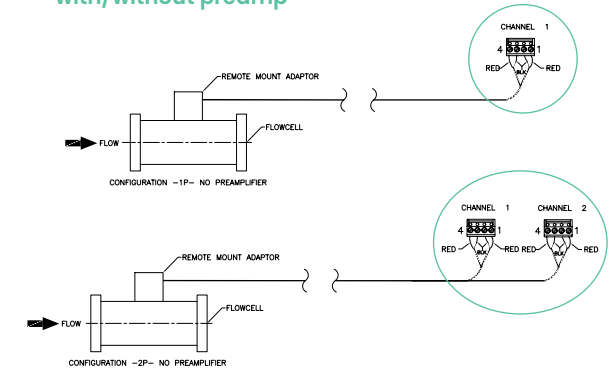


Figure 4: Wiring configurations for remote mount without preamp

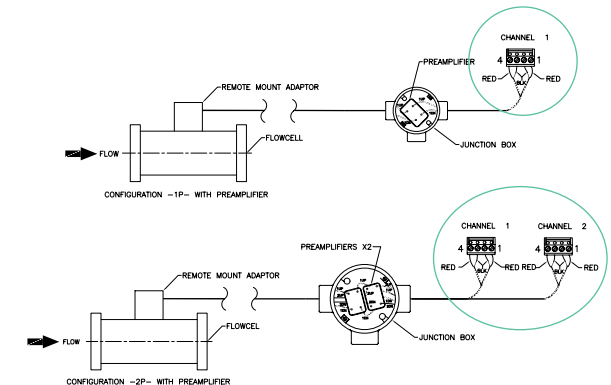


Figure 5: Wiring configurations for remote mount with preamp

Note: for making remote mount connection between FlowCell and electronics see Figure 2 to Figure 7.



WARNING! The PanaFlow Z1G/Z2G Process Gas Flowmeter can measure the flow rate of many gases, some of which are potentially hazardous.



WARNING! Follow all local safety codes and regulations for installing electrical equipment and working with hazardous fluids or flow conditions. Consult safety personnel to verify all procedures.

