

**BILL OF MATERIAL**

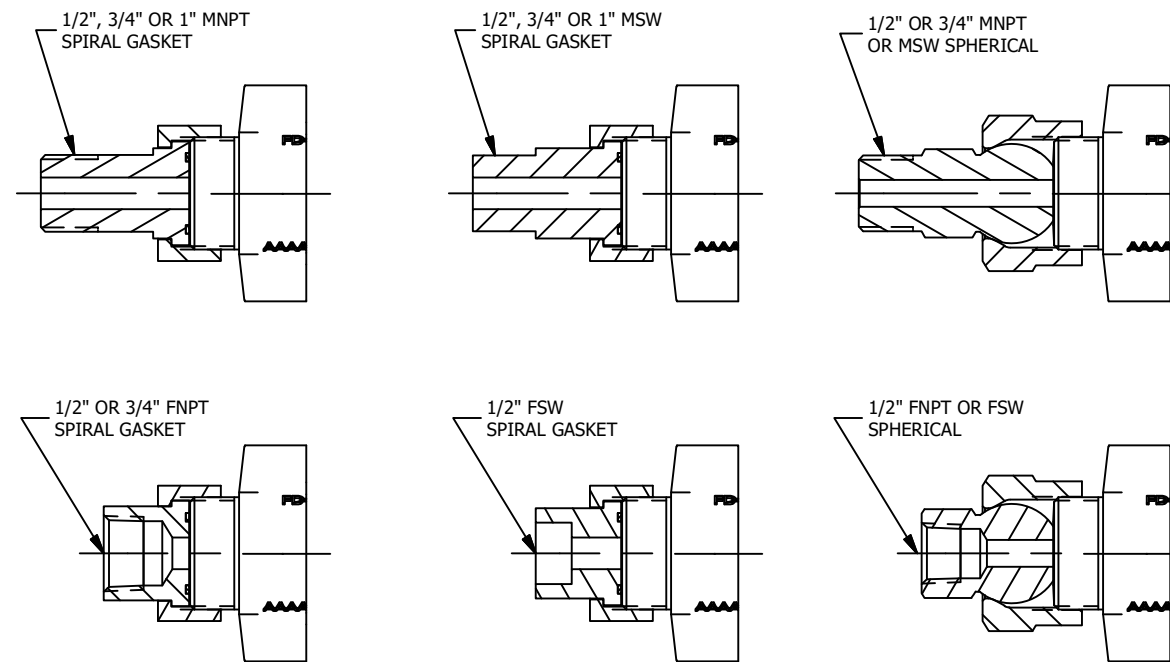
NO.	NAME OF PART	QTY.	MATERIAL	PART NO.	SPECIFICATION
1	BODY, VALVE BOTTOM	1	CARBON STEEL OR 316/316LSS	PER ORDER	A105 OR A182 Gr.F316/316L
2	BODY, VALVE TOP	1	CARBON STEEL OR 316/316LSS	PER ORDER	A105 OR A182 Gr.F316/316L
3	SEAT, UPSTREAM	1	316/NITRIDE	PER ORDER	UNS 31600
4	BALL, NITRIDE	1	316/NITRIDE		UNS 31600
5	SEAL, SEAT	1	316/FLEXICARB		N/A
6	SEAT, DOWNSTREAM	1	316/NITRIDE		UNS 31600
7	RETAINER, BALL	1	316SS		A479 OR A240
8	SPRING, DISC	1	INCONEL 718		B637
9	GASKET, SPIRAL WOUND	1	316/GRAPHITE		N/A
10	WASHER, THRUST	1	NITRONIC 50		A276
11	STEM	1	INCONEL 718		B637
12	PACKING	3	GRAPHITE		N/A
13	RING, PACKING	1	NITRONIC 60		A276
14	RING, SNAP	1	INCONEL 750		B637
15	CHECK, BALL	1	316SS		A479
16	FOLLOWER, GLAND	1	STAINLESS STEEL		17-4
17	STUD, GLAND	4	316SS	A193 Gr.B8M	
18	WASHER, SPRING	8	301SS	UNS 30100	
19	NUT, GLAND	4	316SS	A194 Gr.8M	
20	PIN, SPRING (NOT SHOWN)	1	STAINLESS STEEL	18-8	
21	GLAND, INLET	1	LTCS OR 316/316LSS	PER ORDER	A350 Gr.LF2 OR A479
22	NUT, COMPRESSION	1	LTCS OR 316/316LSS	PER ORDER	A350 Gr.LF2 OR A276
23	PLATE, LOCK	1	316SS	V22123	A479 OR A240
24	SCREW, PAN HEAD	4	316SS	X171030	A193 Gr.B8M
25	BUSHING, STEM	1	316/316LSS	V22122	A276 OR A479
26	ASSEMBLY, HANDLE	1	316/316LSS	S25032	A276
27	WASHER	1	STAINLESS STEEL	X174093	400 SERIES
28	NUT, ACORN	1	316SS	X173001 T	A194 Gr.8M
29	GRIP, HANDLE	1	VINYL	V22080	N/A
30	TAG, RATING	1	316/316LSS	V22079	A240
31	SCREW, DRIVE	4	STAINLESS STEEL	P1654 P	18-8
32	TAILPIECE, UNION TANK CONN.	1	LTCS OR 316/316LSS	PER ORDER	A350 Gr.LF2 OR A276
33	NUT, UNION TAILPIECE	1	LTCS OR 316/316LSS	PER ORDER	A350 Gr.LF2 OR A276
34	GASKET, UNION	1	304/GRAPHITE	V9864 1	N/A

UNION TANK CONNECTION ("A" DIMENSION)								
1/2" MNPT (OR MSW)	1/2" FNPT (OR FSW)	1/2" MNPT SPH. (OR MSW)	1/2" FNPT SPH. (OR FSW)	3/4" MNPT	3/4" MSW	3/4" FNPT	3/4" MNPT SPH. (OR MSW)	1" MNPT (OR MSW)
7.312 [186]	6.437 [163]	7.937 [202]	7.062 [179]	7.312 [186]	8.125 [206]	6.437 [163]	7.937 [202]	7.750 [197]

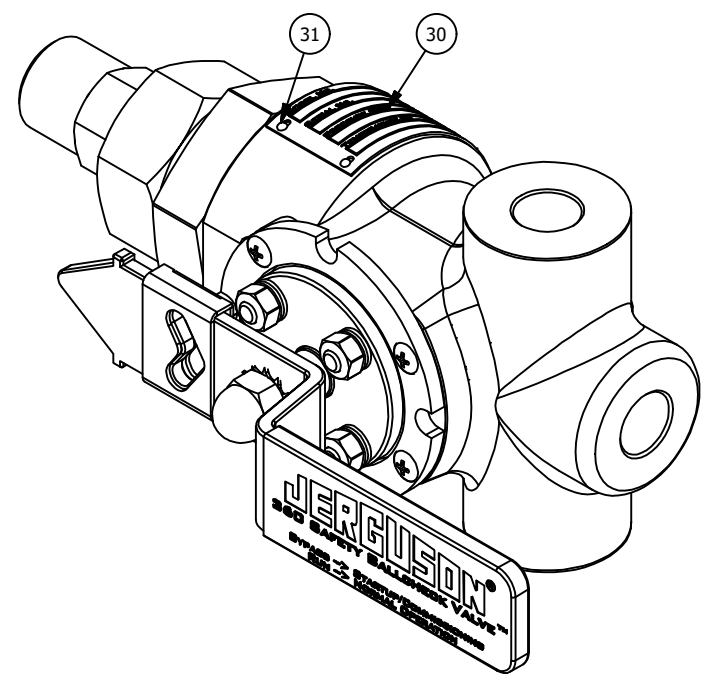
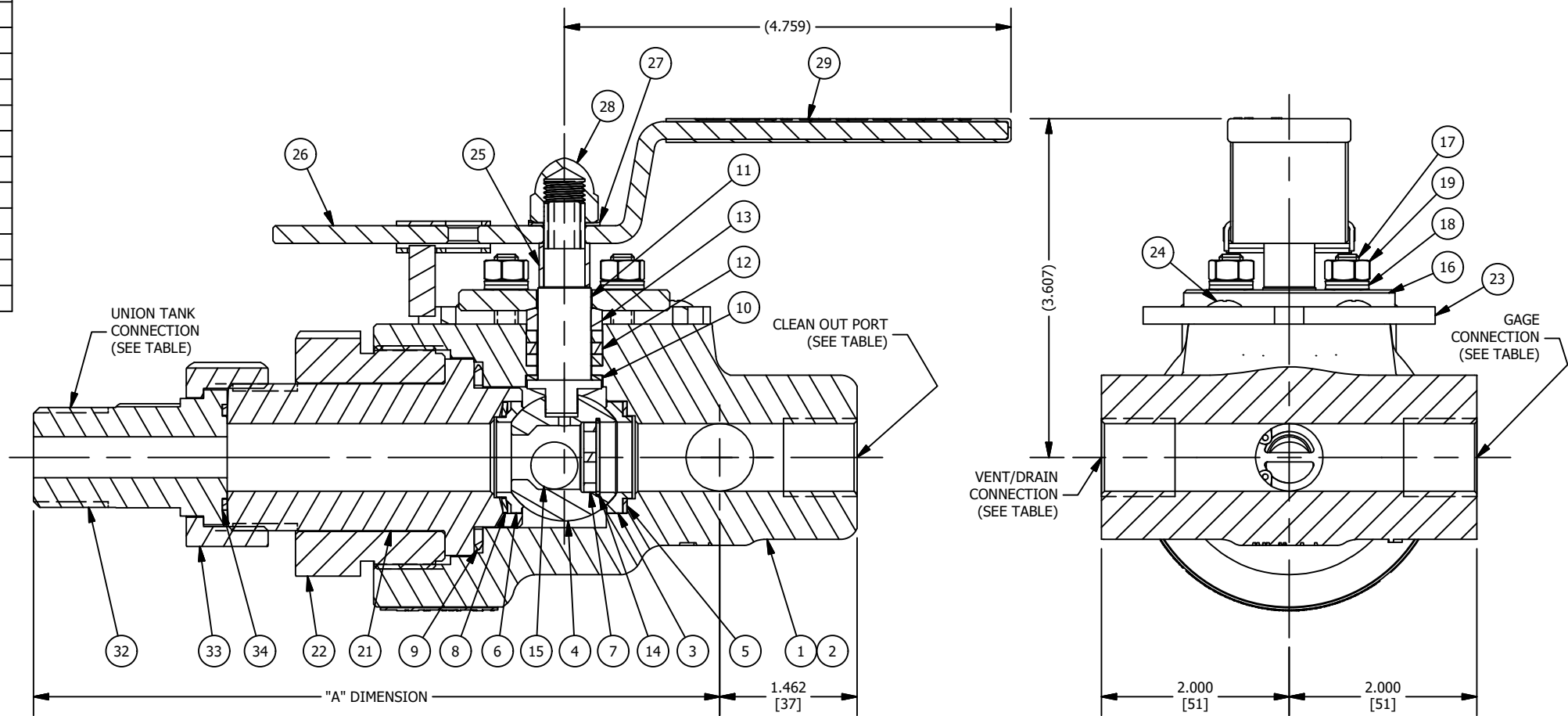
GAGE / VENT / DRAIN	CLEAN OUT PORT
1/2"FNPT, 3/4"FNPT, FSW	1/2" OR 3/4"FNPT

- NOTES:  
 1. DIMENSIONS IN INCHES W/ mm EQUIVALENTS IN BRACKETS  
 2. TOP AND BOTTOM VALVES SAME. (I.E., MIRROR IMAGES) (BOTTOM VALVE SHOWN)  
 3. VALVE RATING - CARBON STEEL:  
 2220 PSI @ 100°F, 255 PSI @ 1000°F (MAX)  
 (156 KG/CM<sup>2</sup> @ 38°C, 18 KG/CM<sup>2</sup> @ 538°C)  
 VALVE RATING - 316SS:  
 2160 PSI @ 100°F, 555 PSI @ 1200°F (MAX)  
 (152 KG/CM<sup>2</sup> @ 38°C, 39 KG/CM<sup>2</sup> @ 649°C)  
 4. SEE TABLES FOR AVAILABLE STANDARD CONNECTIONS  
 5. REFER TO THE FOLLOWING (FOR):  
 • CATALOG BULLETIN J100.56 (ADDITIONAL INFORMATION)  
 • IOM BULLETIN J500.56 (INSTRUCTIONS)  
 6. CONSULT FACTORY FOR ALTERNATE MATERIALS AND CONNECTION OPTIONS.  
 7. ASSEMBLY WEIGHT APPROXIMATELY 12.5 LBS

SPARE PARTS		
PART NO.	DESCRIPTION	SUPPLIED
G294	STEM PACKING	SET CONTAINING THREE PACKING RINGS
S25189	REBUILD KIT	(1) OF EACH: UPSTREAM SEAT, SEAT SEAL, NITRIDE BALL, BALL CHECK, BALL RETAINER, SNAP RING, DOWNSTREAM SEAT, DISC SPRING, INLET GLAND SPIRAL WOUND GASKET, STEM THRUST WASHER, STEM PACKING, SPRING PIN
V9864 1	UNION GASKET	ONE GASKET



**TANK CONNECTIONS**



MANUFACTURED BY  
**Clark-Reliance®**  
 16633 FOLTZ PARKWAY  
 STRONGSVILLE, OH 44149 USA  
 (440) 572-1500 | www.clarkreliance.com  
 © Clark-Reliance® Corporation. All Rights Reserved.

**JERGUSON®**  
**#363 SAFETY BALLCHECK VALVE UNION TANK & NON-UNION GAGE CONNECTIONS**

DRAWN: SH	REV.: 1
CHECKED: RMW	
DATE: 7/18/2017	
REVISION: 1 PER CDC 17-347/SH 9/18/17	
DRAWING NO.: 363	