

## BWM9003

## 902-928 MHz

### ORDERING INFORMATION

| PART#   | FREQUENCY   |
|---------|-------------|
| BWM9003 | 902-928 MHz |

### ELECTRICAL SPECIFICATIONS

|   |               |
|---|---------------|
| FREQUENCY RANGE                             | 902 - 928 MHz |
| NOMINAL GAIN                                | 3.0 dBd       |
| BANDWIDTH VSWR 1.5                          | 26 MHz        |
| HORIZONTAL BEAMWIDTH (at half power points) | 360°          |
| VERTICAL BEAMWIDTH (at half power points)   | 28°           |
| POWER RATING                                | 500 W         |
| LIGHTNING PROTECTION                        | DC ground     |
| TERMINATION                                 | N-Female      |

### MECHANICAL SPECIFICATIONS

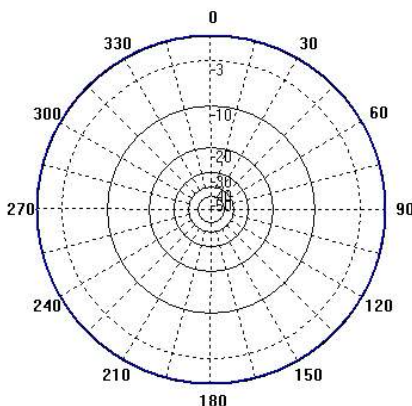
|  |   |
|--|---|
| HEIGHT                                 | 68" (1727 mm)                             |
| WIDTH                                  | 1.90" (48.3 mm)                           |
| WEIGHT                                 | 4 lbs. (1.8 kg)                           |
| RATED WIND VELOCITY                    | 120 mph (193 kph)                         |
| LATERAL THRUST @ 100 mph WIND VELOCITY | 16.5 lbs. (7.5 kg)                        |
| PROJECTED AREA (flat plane equivalent) | .66 ft <sup>2</sup> (.06 m <sup>2</sup> ) |

### MOUNTING INFORMATION

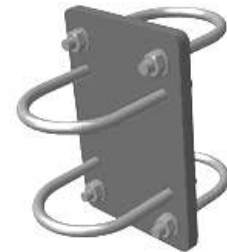
C1005 clamp with mounting hardware is supplied.

### C1005

Parallel or 90° pipe to pipe 1.25" - 2.75" pipe (aluminum plate)



HORIZONTAL PATTERN



The **BWM9003** has been designed to provide omni directional performance in the **902-928 MHz** frequency band. Antenna base is 6061-T6 aluminum to provide a solid secure mount for the N-Female termination. The **BWM9003** is fully enclosed in a UV-stable all season radome.