

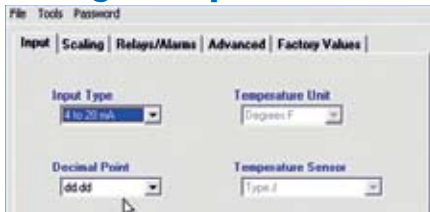
# METERVIEW® 3.0 SOFTWARE



- Program or read meter settings
- Save meter profiles for cloning
- Use profiles for reporting

## PROGRAMMING

### Configure Input



- Input type
- Decimal point
- Temp units
- Sensor type

### Meter Scaling



- Scale input
- No cryptic codes
- Simple to use

### Set Relays/Alarms



- Select mode
- Set/reset points
- Fail-safe operation
- On & off delays

### Advanced Settings



- Password
- Filter & bypass
- Transmit delay
- Function type
- Cutoff value

## Calibration Reporting

Printed by MeterView 3.00 - Build 2060 Printed on 3/18/2003 3:45:28 PM  
PD765 Configuration - Meter #00

<b>Input Configuration</b> Input selected: 4 to 20 mA Decimal point: ddd.d Temperature unit: Degrees F Temperature sensor: Type J	<b>Miscellaneous</b> Password: _____ Meter address: 00 Serial number: 200111201423430
<b>Current Scaling (4-20 mA)</b> Current gain: 0.0340963 Current offset: -0.1501465 Voltage gain: 0.0175513 Voltage offset: -1.0410160 Test gain: 0.0169000	<b>Factory Calibration Constants</b> Test offset: -0.0507000 TC Type J gain: 1.0454590 TC Type J offset: 6947.075 TC Type J Cj ref.: 34415.38 TC Type K gain: 1.0459060 TC Type K offset: 6910.510 TC Type K Cj ref.: 34463.38 TC Type T gain: 1.0452330 TC Type T offset: 6920.954 TC Type T Cj ref.: 34447.75 TC Type E gain: 1.0452550 TC Type E offset: 6951.981 TC Type E Cj ref.: 34443.00
<b>Voltage Scaling (0-10 V)</b> Input 1: 0.00 Display 1: 0.0 Input 2: 10.00 Display 2: 50.0	RTD 100 Ohm PT (385) gain: 1.0422950 RTD 100 Ohm PT (385) offset: 6221.340 RTD 100 Ohm PT (392) gain: 1.0422950 RTD 100 Ohm PT (392) offset: 6221.340
<b>Relay/Alarm 1 Settings</b> Action: Automatic Reset Fail-safe: Off Set point: 40.0 On Delay: 0 Reset point: 10.0 Off Delay: 0	<b>Relay/Alarm 2 Settings</b> Action: Automatic Reset Fail-safe: Off Set point: 40.0 On Delay: 0 Reset point: 10.0 Off Delay: 0
<b>Display Response Variables</b> Adjustment: 0.0 Filter: 10 Bypass: 0.2 Transmit delay: 0	

## SPECIFICATIONS

**System Requirements:** Windows® 95/98/ME/2000/XP/Vista

**Communications:** RS-232 Adapter or RS-422/485 Adapter

**Meter Address:** 00 - 99

**Reports:**

- Data logging: Save as HTML file format
- Configuration: Save as PDC file format, export to HTML, or print configuration

**Baud Rate:** 300 - 19,200 bps

**Configuration:** One meter at a time

## ORDERING INFORMATION

Free MeterView Software	
Free software download at <a href="http://www.predig.com/meterview">www.predig.com/meterview</a>	
Accessories	
Model	Description
PDA7232	RS-232 Serial Adapter (includes PDA7420)
PDA7422	RS-422/485 Serial Adapter (includes PDA7420)
PDA7485-I	RS-232 to RS422/485 Isolated Converter
PDA7486-N	RS-232 to RS422/485 Non-Isolated Converter
PDA7488	Trident RS-232 & RS-485 Isolated Multi-Input Adapter Board
PDA8232-N	USB to RS-232 Converter
PDA8485-I	USB to RS-422/485 Isolated Converter
PDA8485-N	USB to RS-422/485 Non-Isolated Converter
PDA9485-01	Ethernet Serial Server

### Disclaimer

The information contained in this document is subject to change without notice. Precision Digital Corporation makes no representations or warranties with respect to the contents hereof, and specifically disclaims any implied warranties of merchantability or fitness for a particular purpose. ©2009 Precision Digital Corporation. All rights reserved.

# METERVIEW® 3.0 SOFTWARE

## DATA ACQUISITION

### Model PDA7503-1

Monitor one meter



### Model PDA7503-2

Monitor one to ten meters



### Model PDA7503-3

Monitor one to one hundred meters



- Save data to a file
- Monitor up to 10 meters per tab
- 10 tabs = 100 meter total capacity
- Acknowledge relays

### Sample Data Logging File

**PD765 Log File**

Name: C:\MV3logfile.htm      Created: 2/26/2003 5:34:12 PM

Serial Port: COM 1      Connection speed: 2400 Baud      Logging rate: 1 update every 10 seconds

Date & Time	Tag Number	Address	Display	Units	Relay 1	Relay 2
2/26/2003 5:34:12 PM	Tank 1 Level	06	17.70	Feet	P1 On	P2 Off
2/26/2003 5:34:12 PM	Tank 2 Level	07	18.18	Feet	P3 Off	P4 Off
2/26/2003 5:34:12 PM	Tank 3 Level	08	20.54	Feet	P5 On	P6 Off
2/26/2003 5:34:12 PM	Tank 1 Temp	09	74	°F	Off	Off
2/26/2003 5:34:12 PM	Tank 2 Temp	10	72	°F	Off	Off
2/26/2003 5:34:12 PM	Tank 3 Temp	11	72	°F	Off	Off
2/26/2003 5:34:22 PM	Tank 1 Level	06	17.58	Feet	P1 On	P2 Off
2/26/2003 5:34:22 PM	Tank 2 Level	07	18.04	Feet	P3 Off	P4 Off
2/26/2003 5:34:22 PM	Tank 3 Level	08	19.79	Feet	P5 Off	P6 Off
2/26/2003 5:34:22 PM	Tank 1 Temp	09	74	°F	Off	Off
2/26/2003 5:34:22 PM	Tank 2 Temp	10	72	°F	Off	Off
2/26/2003 5:34:22 PM	Tank 3 Temp	11	72	°F	Off	Off
2/26/2003 5:34:32 PM	Tank 1 Level	06	16.47	Feet	P1 On	P2 Off
2/26/2003 5:34:32 PM	Tank 2 Level	07	16.87	Feet	P3 Off	P4 Off
2/26/2003 5:34:32 PM	Tank 3 Level	08	17.10	Feet	P5 Off	P6 Off
2/26/2003 5:34:32 PM	Tank 1 Temp	09	74	°F	Off	Off

**GREAT FOR TANK LEVEL MONITORING!**

Your Local Distributor is: