

MATERIAL: SEE BOM
 DRAWN: SRM CHECKED:
 SCALE: N/A DATE: 01-18-2006



**DURASTAR
ASSEMBLY**

DRAWING NO.:
DS1000-A

REV.
0

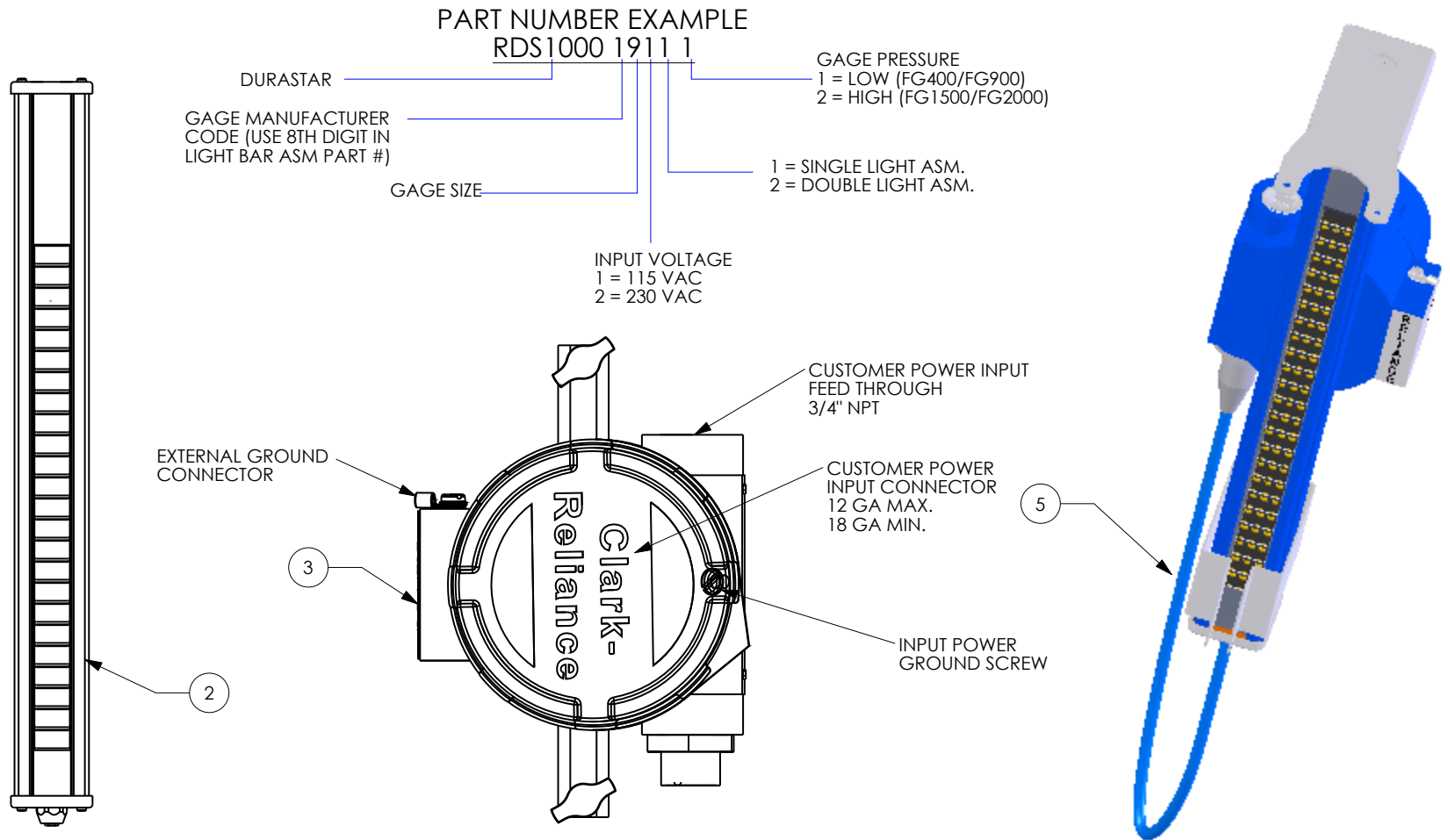
REV. 0 PER CDC 06-016: SRM

PART NO.: RDS1000_####_#

TOLERANCE CLASS: B

SHEET: 1 OF 1

* TOLERANCES DEFINED BY PES-004



- NOTES:
 1) SINGLE ASSEMBLIES USE (1) RDS1002_#_#_# LIGHT BAR ASM.
 DOUBLE ASSEMBLIES USE (1) RDS1002_#_#_# LIGHT BAR ASM
 AND (1) RDS1003_#_#_# LIGHT BAR ASM.
 2) ITEMS 1,4 NOT PICTURED.
 3) MOUNTING BRACKETS (NOT PICTURED)
 ARE INCLUDED IN THE LIGHT BAR (ITEM 2) SUB-ASSEMBLY.
 4) OPTIONAL 2.5' POWER CORD EXTENSION P/N V20601.

ITEM	PART NUMBER	DESCRIPTION	QTY.
1	R500_E235A	IOM	1
2	SEE NOTE 1	LIGHT BAR ASSEMBLY	SEE NOTE 1
3	RDS1001_#	POWER SUPPLY	1
4	V20301	SHEET PROTECTOR	1
5	RDS7009	POWER CORD	1