

Tools and Strategies for Optimal Gas and Flame Detector Placement



Your Host

John Greivell
Vice President of Sales
Lesman Instrument Co
johng@lesman.com



Featured Speaker

Murtaza Gandhi
Senior Process Safety Engineer
Baker Risk
mgandhi@BakerRisk.com



Follow the Conversation LIVE
[@Lesman_Inst](https://twitter.com/Lesman_Inst) [#LesmanWebinar](https://twitter.com/LesmanWebinar)

Tools and Strategies for Optimal Gas and Flame Detector Placement

Murtaza I. Gandhi, P.E.

BAKER ENGINEERING AND RISK CONSULTANTS, INC.



©2019 Baker Engineering and Risk Consultants, Inc.



Agenda

- Basics of fire and gas detector mapping
- Shortcomings of the traditional approach
- Discussion of performance based detector mapping
- Importance of testing to validate results
- Comparison of fire and gas detection lifecycle and SIS lifecycle
- Summary



Understanding Basics – Flame Detector

- Flame Detector – sensor designed to detect and respond to the presence of flame or fire, allowing flame detection
- Types:
 - Ultraviolet
 - Infrared
 - UV/IR



Understanding Basics – Gas Detector

- Gas Detector – Device that detects the presence of gases in an area, often as a part of the safety system
- Detectors can help early detection of different types of gases including flammable, toxic, oxygen, and others
- Types: Electrochemical, catalytic bead, IR, Photoionization and ultrasonic

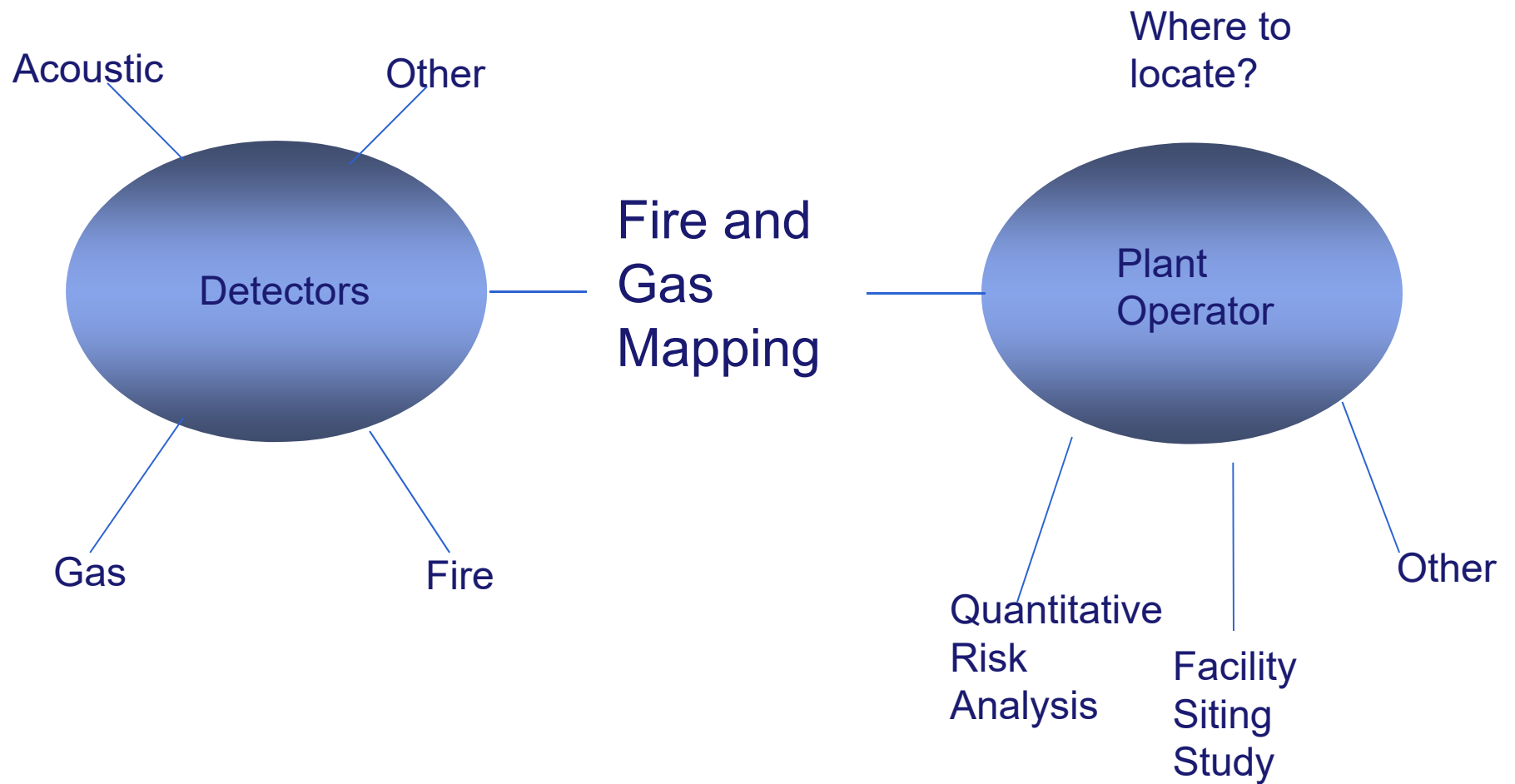


Introduction

- What is F&G?
 - Fire and Gas Detection
 - Used to alert personnel of a potential fire or gas release
 - Outputs can include:
 - Visual and audible alarms
 - Operator intervention
 - Isolation of processes (manual/automatic)
 - Activation of deluge systems (manual/automatic)



How to Locate Fire and Gas Detectors





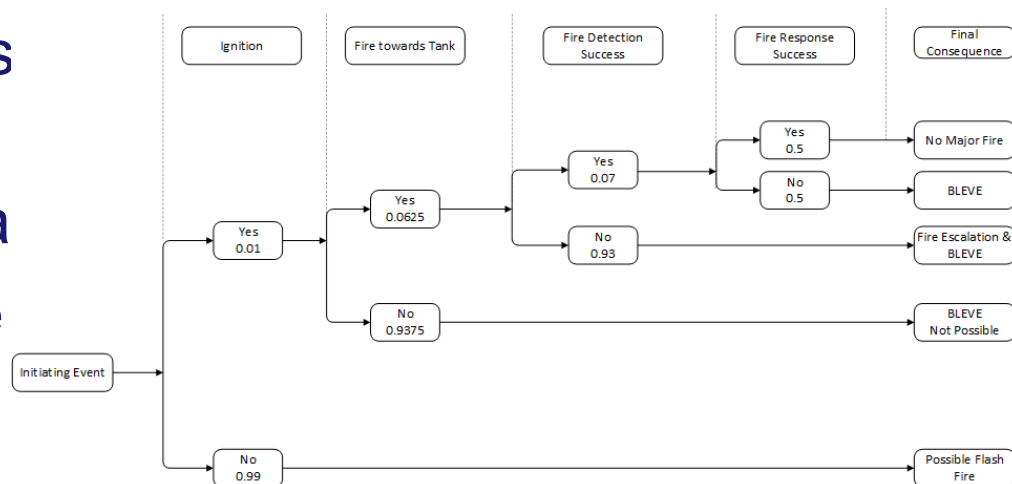
Introduction

- What makes F&G studies difficult?
 - HSE 8 years of offshore data – 60% of known releases were detected
 - No current technical industry standards
 - API Pub 2031 (1991)
 - Most users have internal standards
 - Best industry practice
 - Traditional studies
 - Experience based
 - CFD modeling involves high cost to place very few detectors



Performance Based Detector Mapping

- ISA84 TR7 provides guidance on the implementation of fire and gas detectors
- According to ISA84 TR7, performance of these systems depends on three main components:
 - Detector coverage
 - Fire and Gas System (FGS) safety availability
 - Mitigation effectiveness
- Two main approaches coverage
 - Geographic coverage
 - Scenario coverage





Types of Coverage

- Simply defined,
 - Scenario coverage indicates the number of hazardous scenarios that can be successfully detected by FGS out of all the plausible scenarios
 - Geographic coverage indicates the area or a volume that can be covered with detectors if a release or fire occurs in the monitored area



Challenges with Calculating Detector Coverage

- Depends on the number of scenarios defined
 - What are the right number of scenarios?
- Depends on the fluctuations in the plume concentration
 - Is there enough time for the sensor to detect?
- How to model cross-wind and up-wind releases?
- Different detectors have different response times
 - Response characteristic impacts if detection is successful
 - Impacts the speed of the response

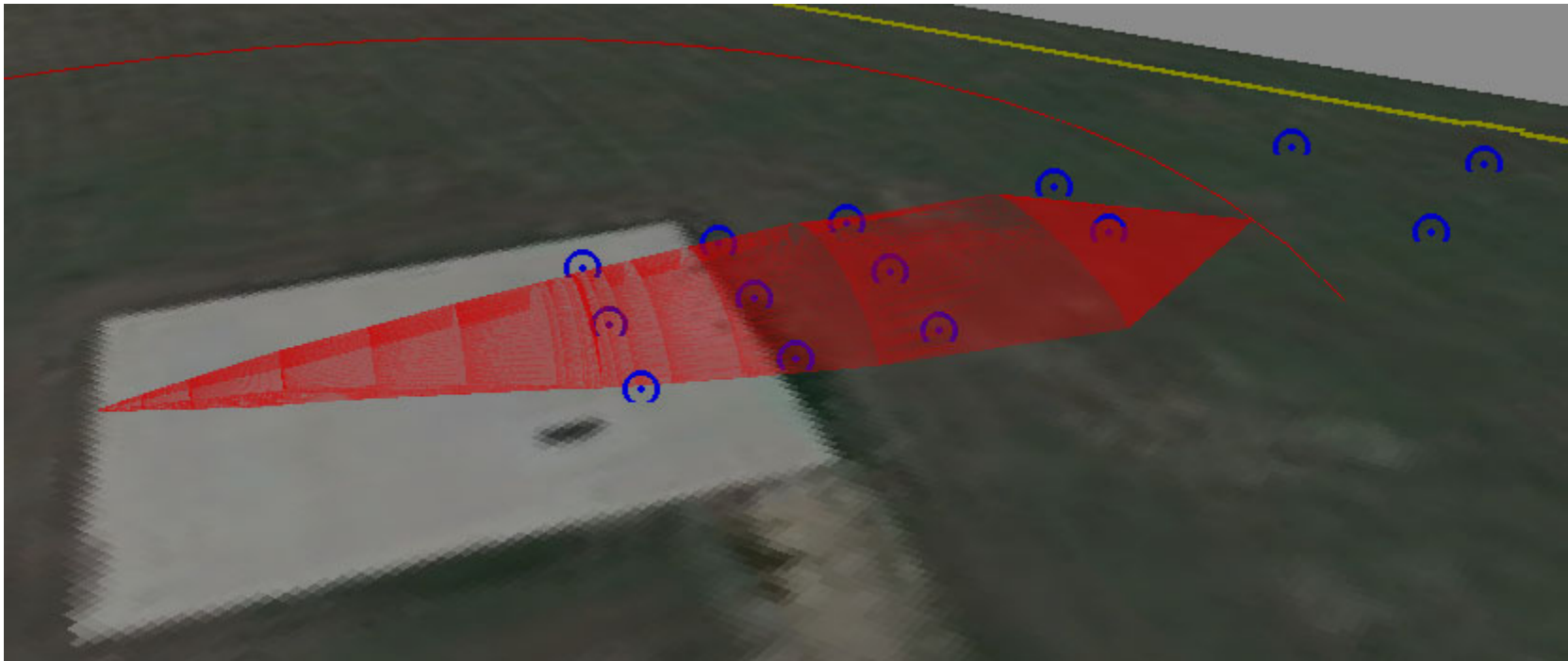


How Testing Helps to Validate Results

- To answer some of the questions, we performed a series of tests
- Tests were performed with saturated propane for 1/2", 3/4" and 1" releases in 5 different orientations
- 74 tests were performed ranging from 1 to 1.5 minutes
- 14 detectors were placed 60ft up to 200ft from the release point (3 different manufacturers)

Case Study Results

- Horizontal release downwind





Case Study – Results (for 0.5inch tests)

- Scenario coverage for 1001 detector was observed to be <60%
- Scenario coverage for 2002 detector was observed to be <40%
- Most of the releases in the up or west direction were not detected
- Wide ranging fluctuations were observed in concentrations during the test duration
- Speed of rise and maximum concentrations varied significantly between detectors



Performing FGS Mapping with Scenario Coverage



Methodology

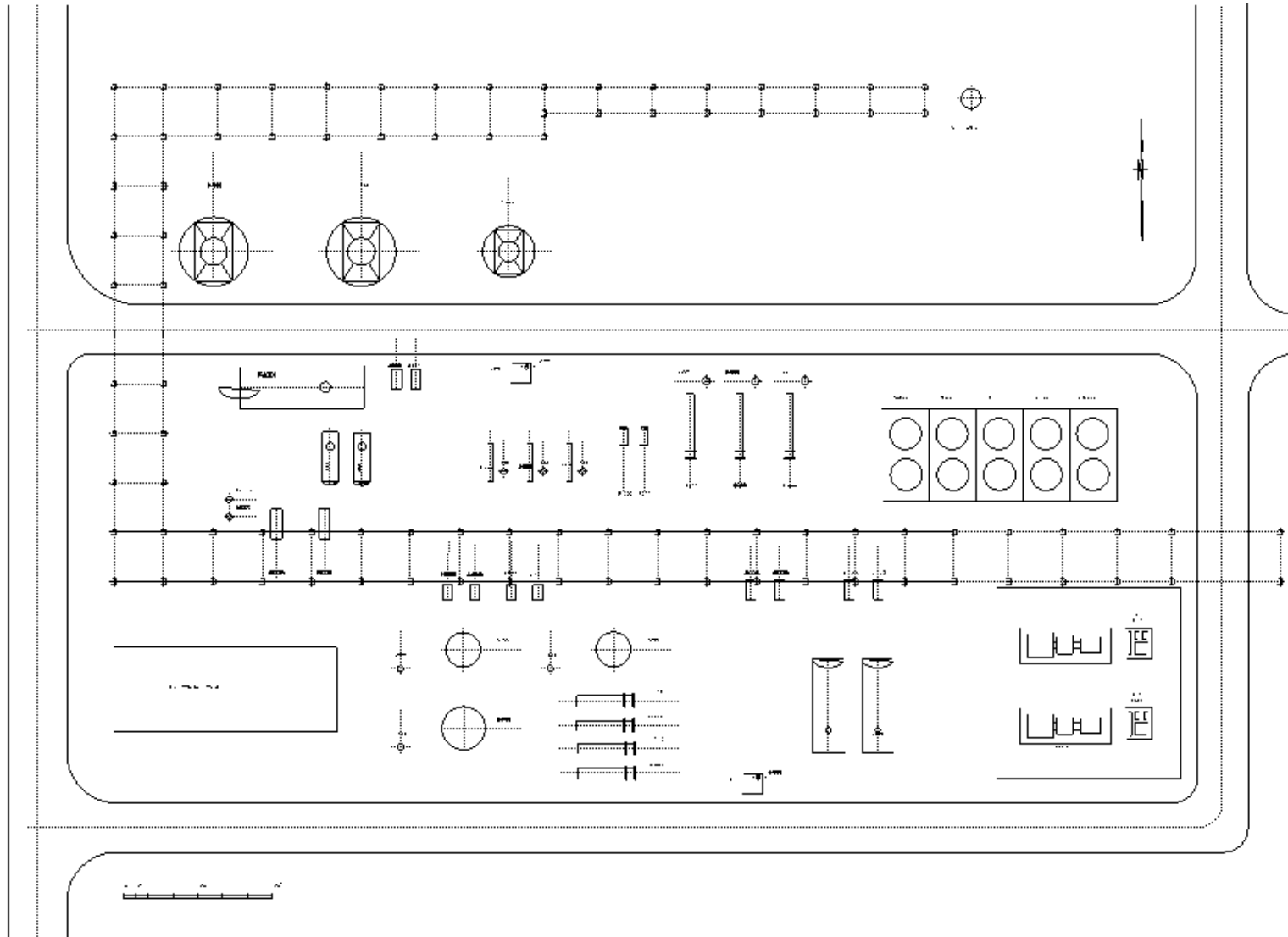
- Model development
- Import consequence and risk contours to aid in fire and gas detector placement
 - Flammable Contours
 - Toxic Contours
 - Thermal Contours
 - Risk Contours
- Placement and orientation of fire and gas detectors within the site
- Analyze and review detector coverage



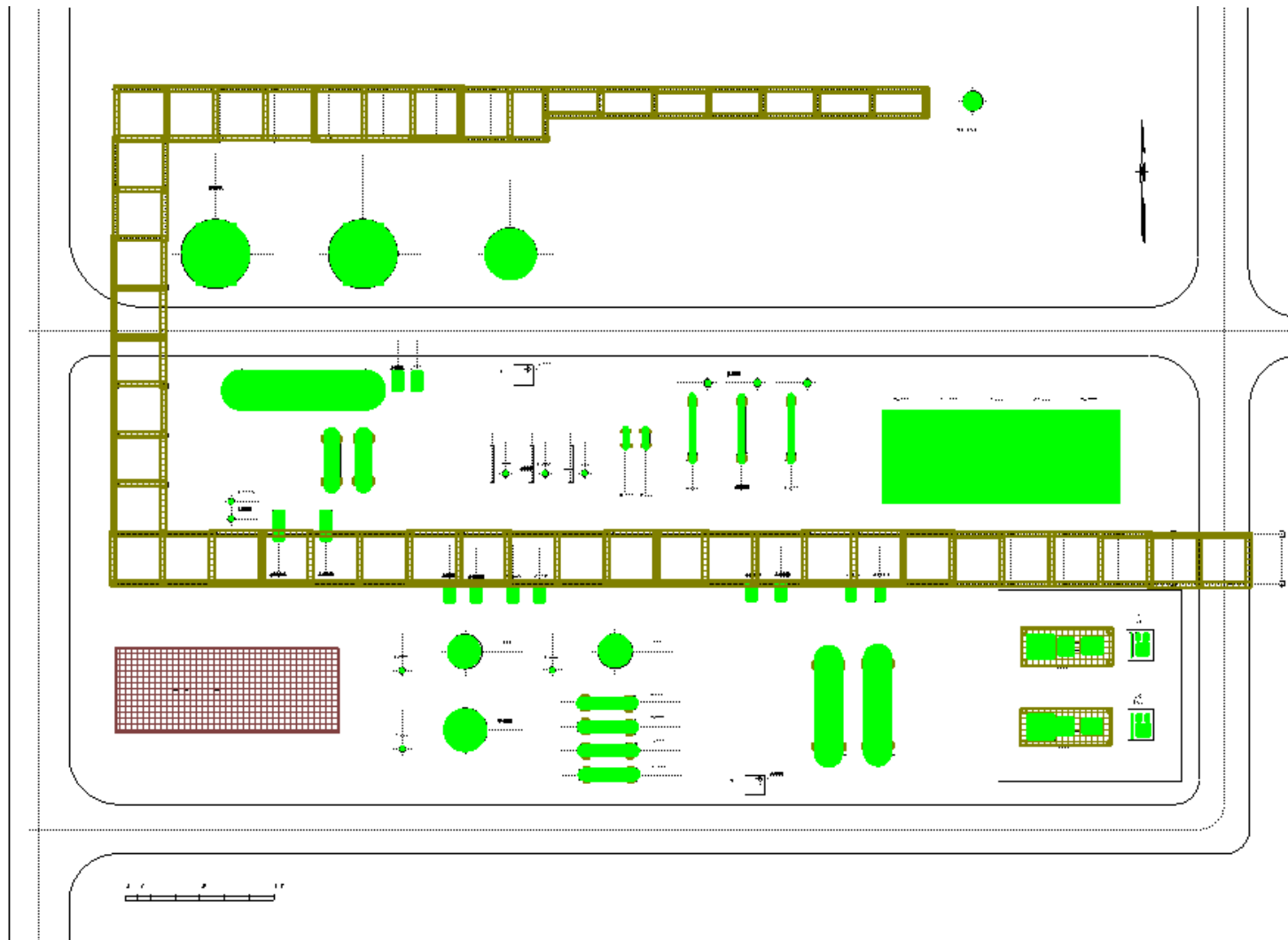
Model Development

- Start with a CAD plot plan of the unit
- A unit survey is conducted to determine the dimensions of major equipment and structures
- Major equipment and structures are added to the FGS software model in 3-dimensions

Plot Plan

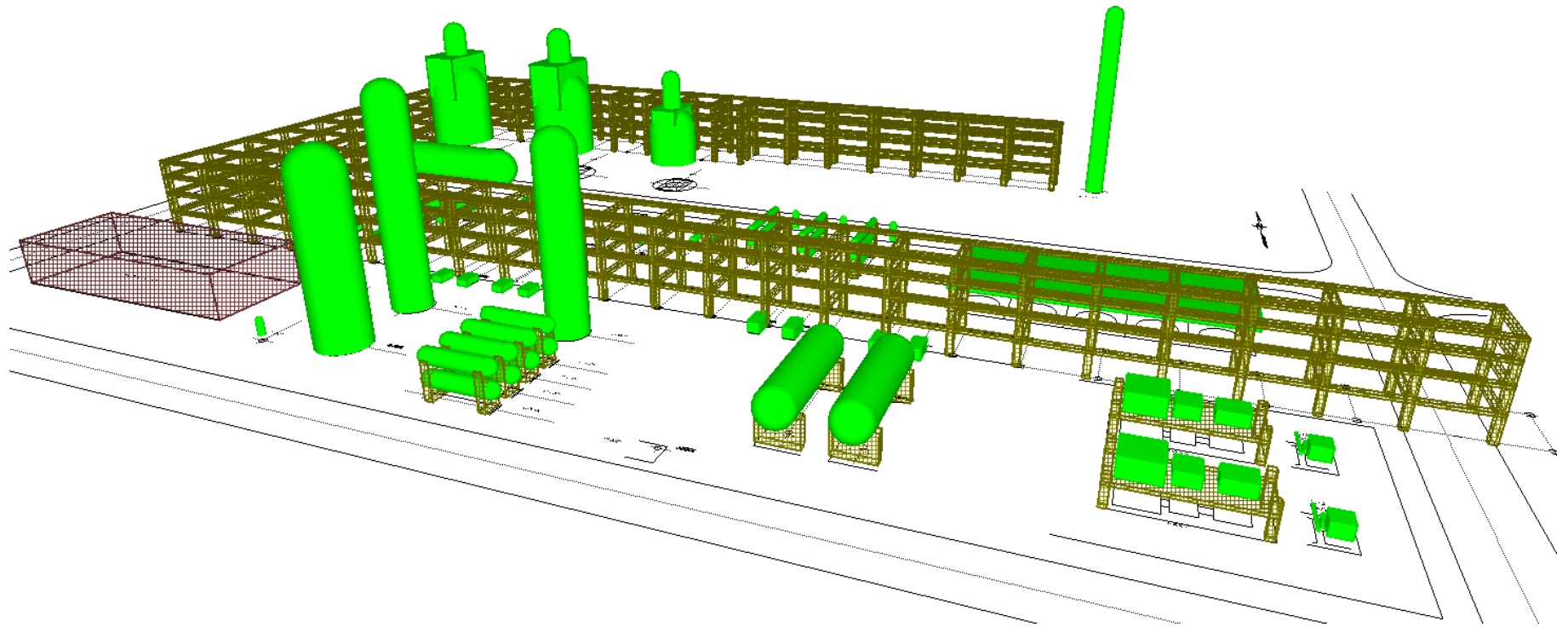


Complete Model – 2D





Complete Model – 3D



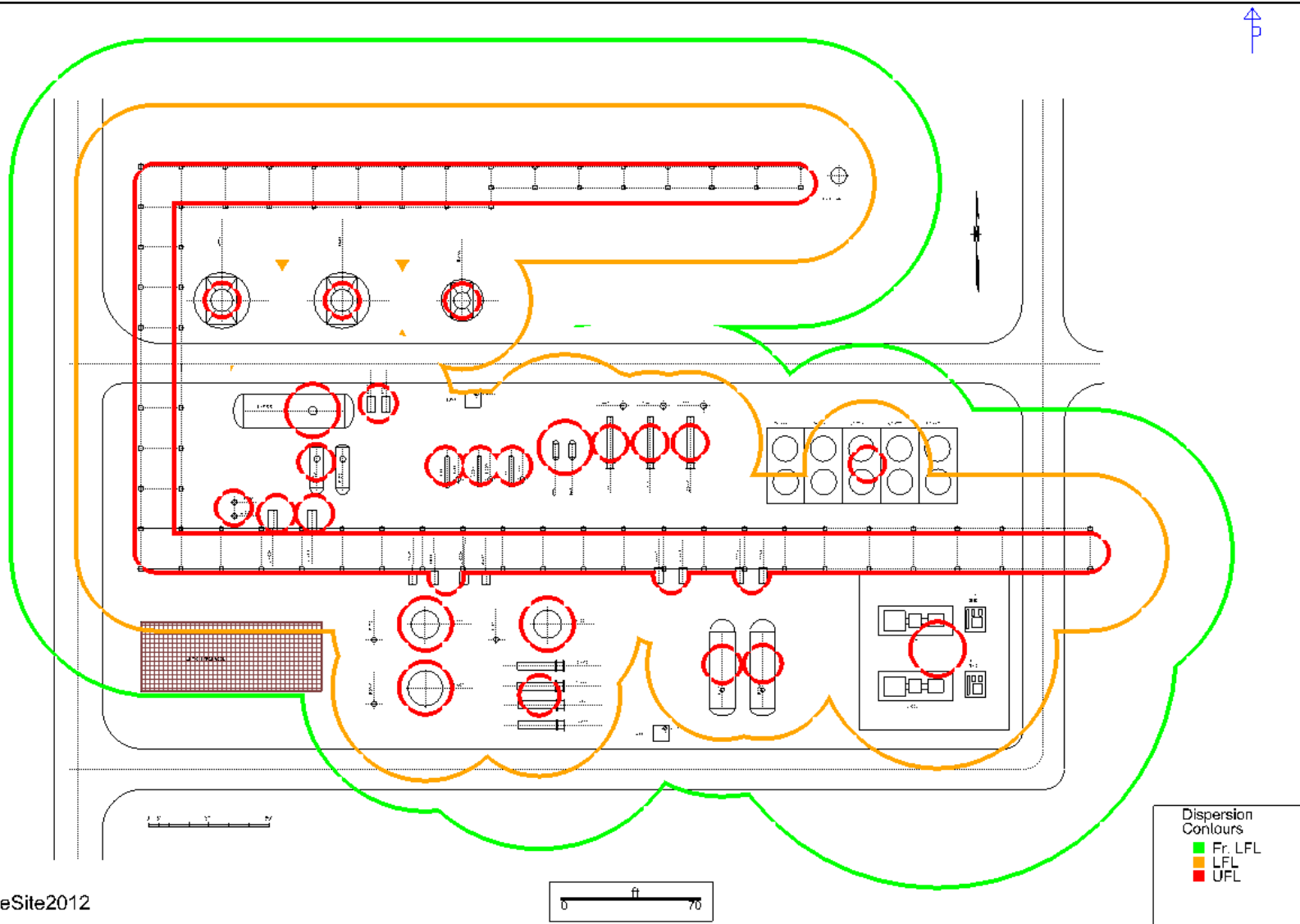


Consequence and Risk Contours

- Contours are imported into the model from the site consequence models
- Flammable contours are imported at values of UFL, LFL, $\frac{1}{2}$ LFL
- Toxic contours are imported at values of appropriate probit concentrations
- Thermal contours are imported at values of 4 kW/m², 12.5 kW/m², and 37.5 kW/m²
- Risk contours
 - Flammable, toxic, and thermal risk only



Flammable Contours



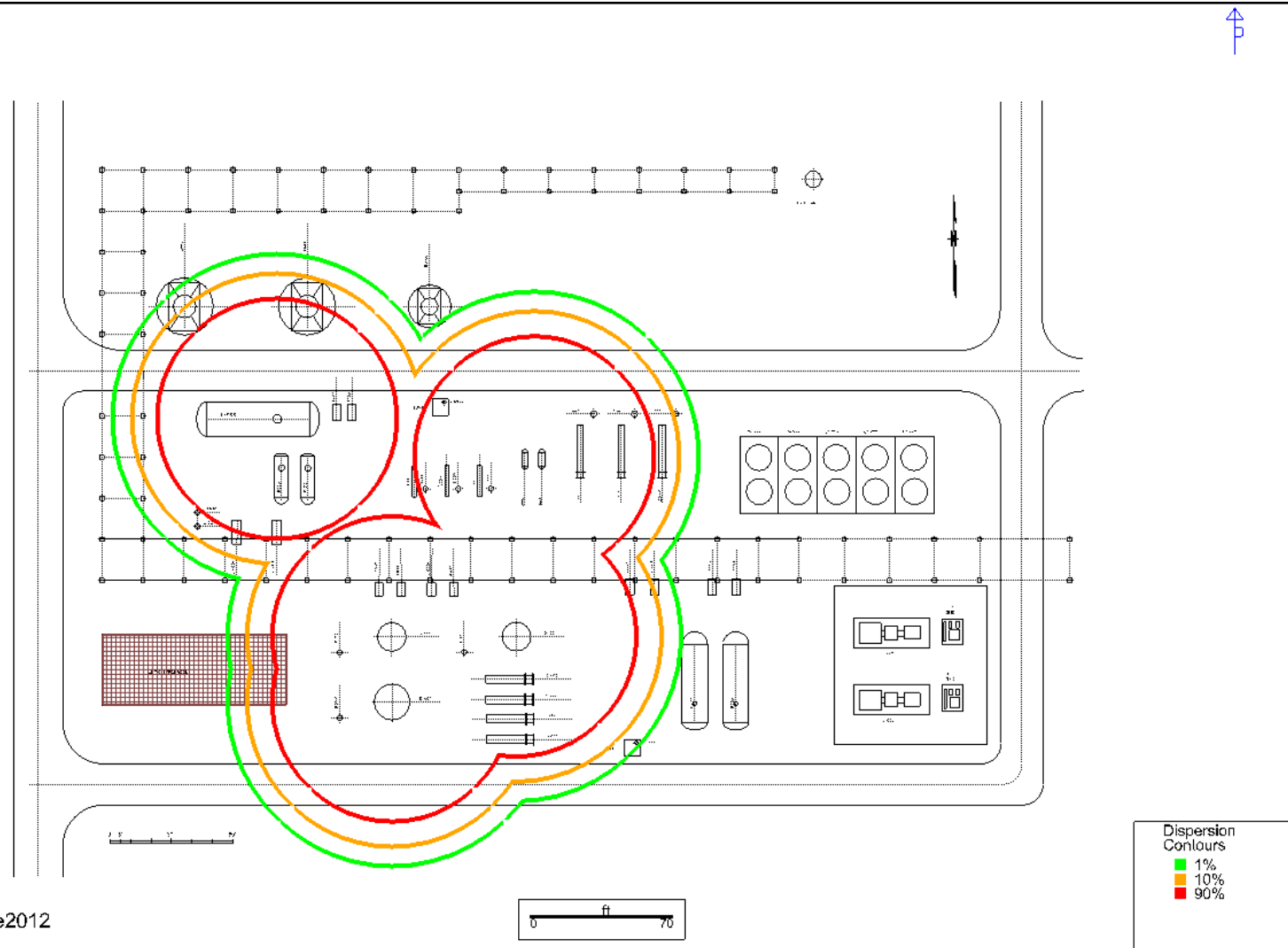
SafeSite2012

0 ft 70

Dispersion
Contours
Fr, LFL
LFL
UFL

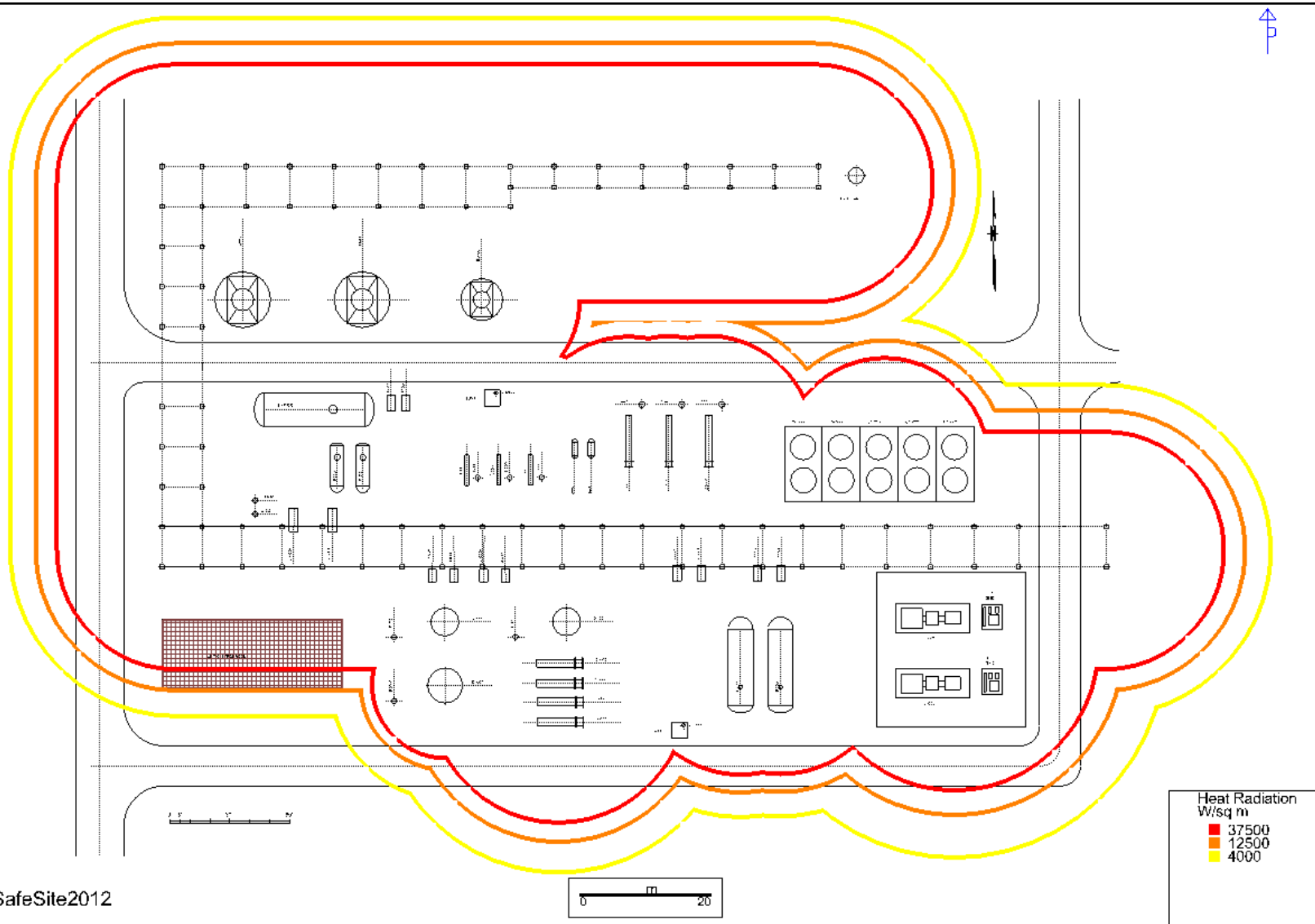


Toxic Contours



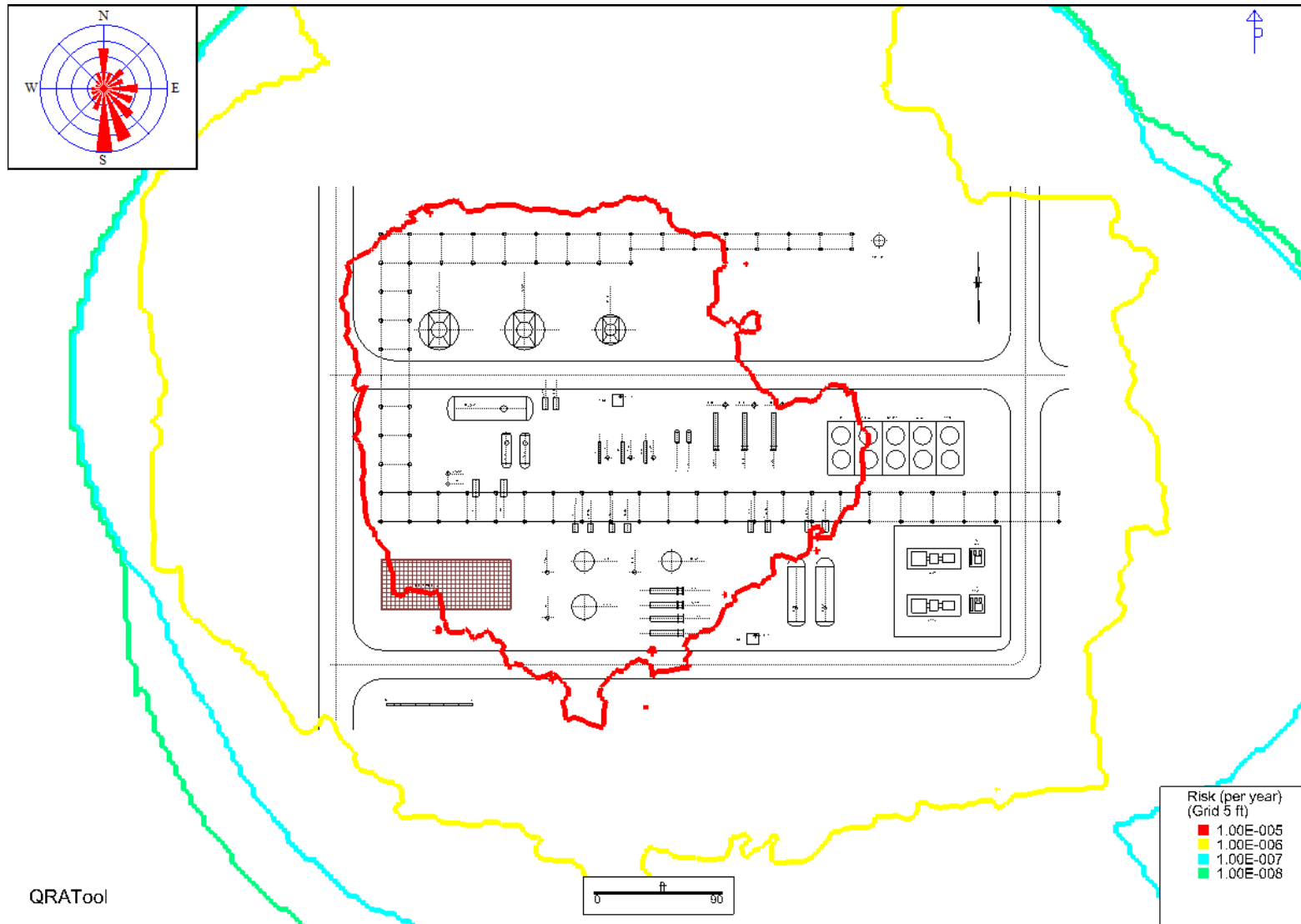


Thermal Contours





Risk Contours



QRATool

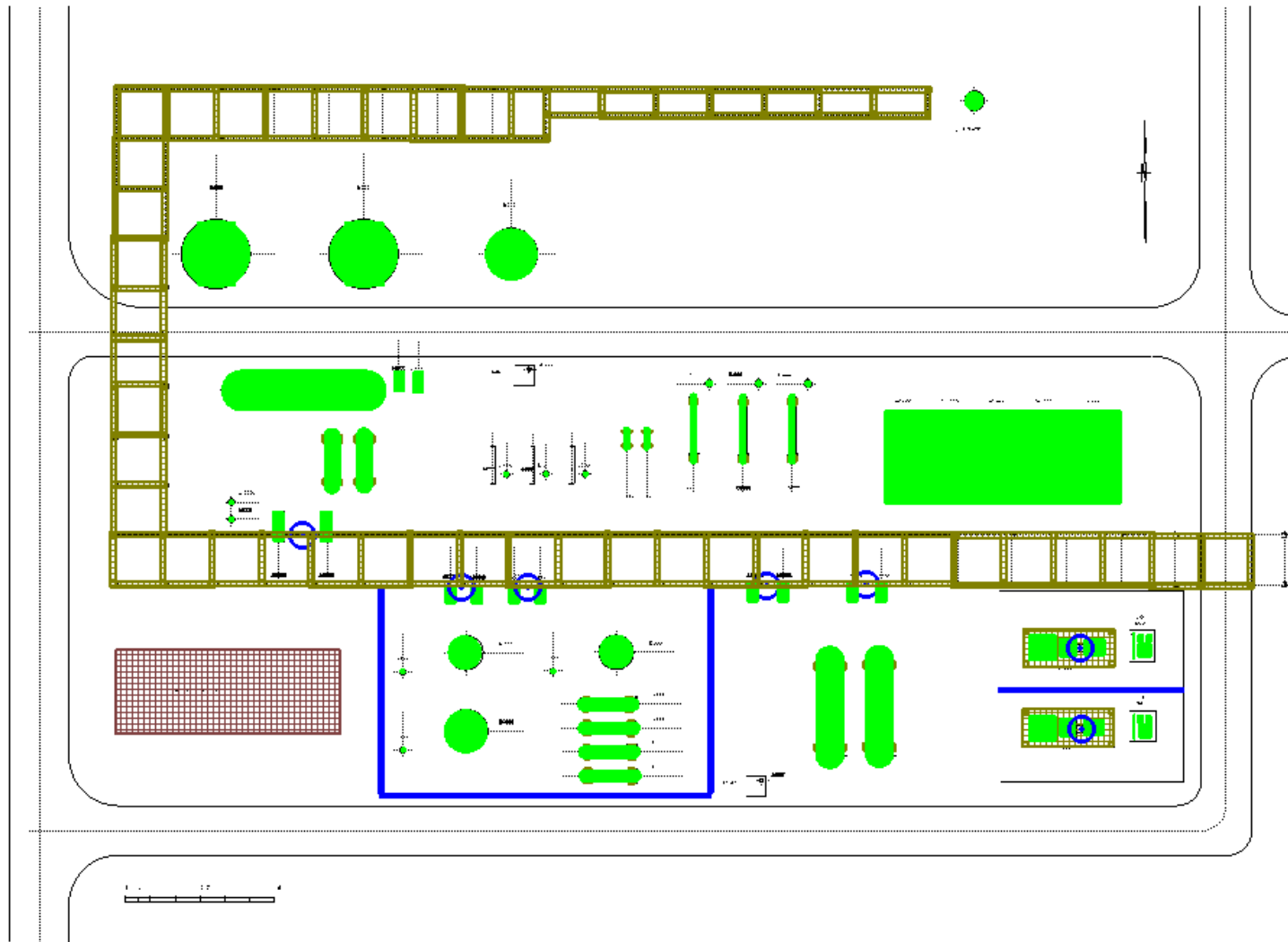


Fire and Gas Detection

- Fire and gas detectors are located based on consequence and risk contours, client guidelines, and industry practices
- Gas detectors
 - Point gas detectors are given coordinates and a height to show a physical location in 3D
 - Line detectors are given coordinates and a height to allow them to interact with the 3D model
 - Acoustic detectors are given coordinates and a height to allow them to interact with 3D model
- Fire detectors
 - Conical flame detectors

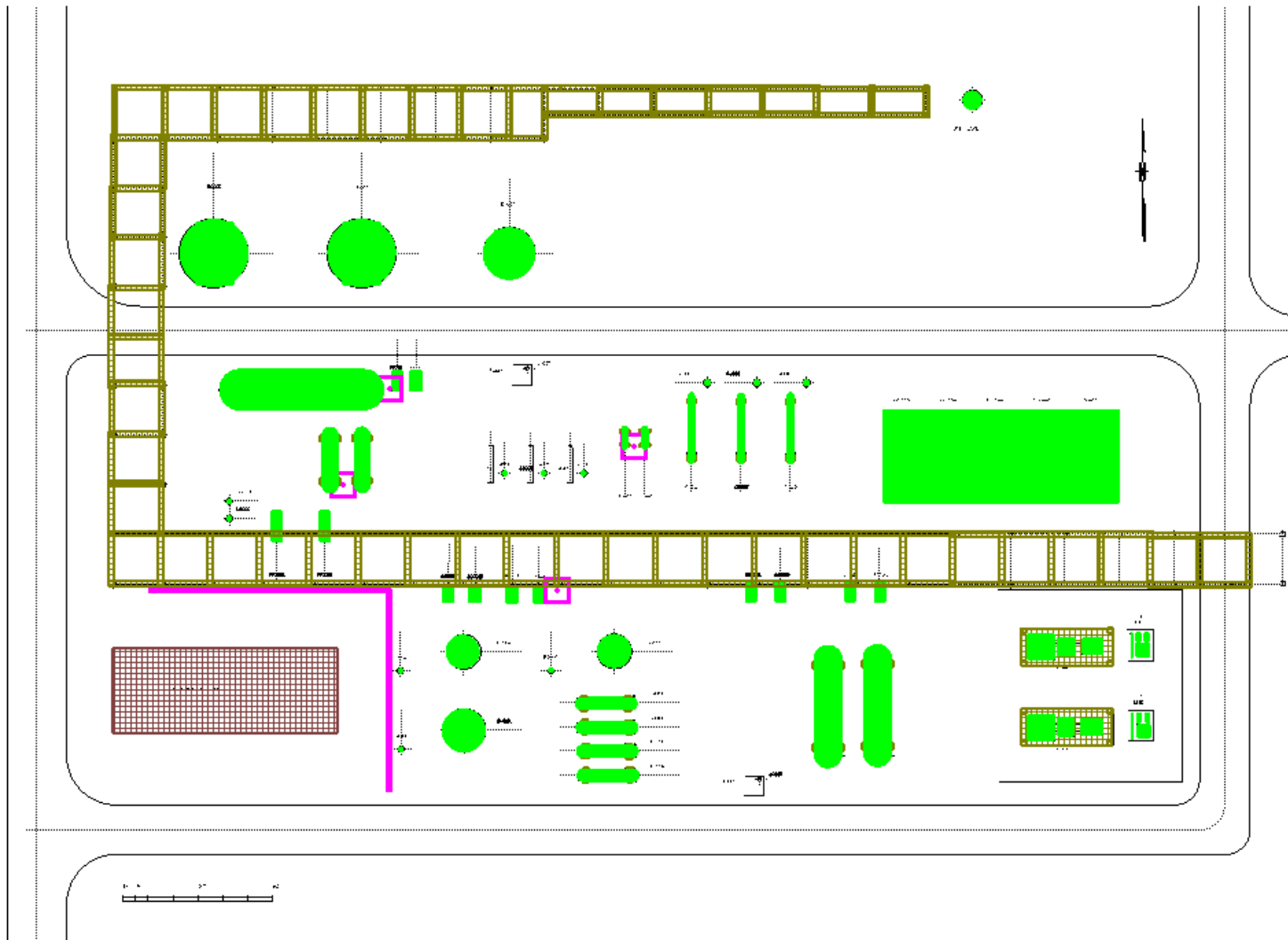


Example Flammable Gas Detection

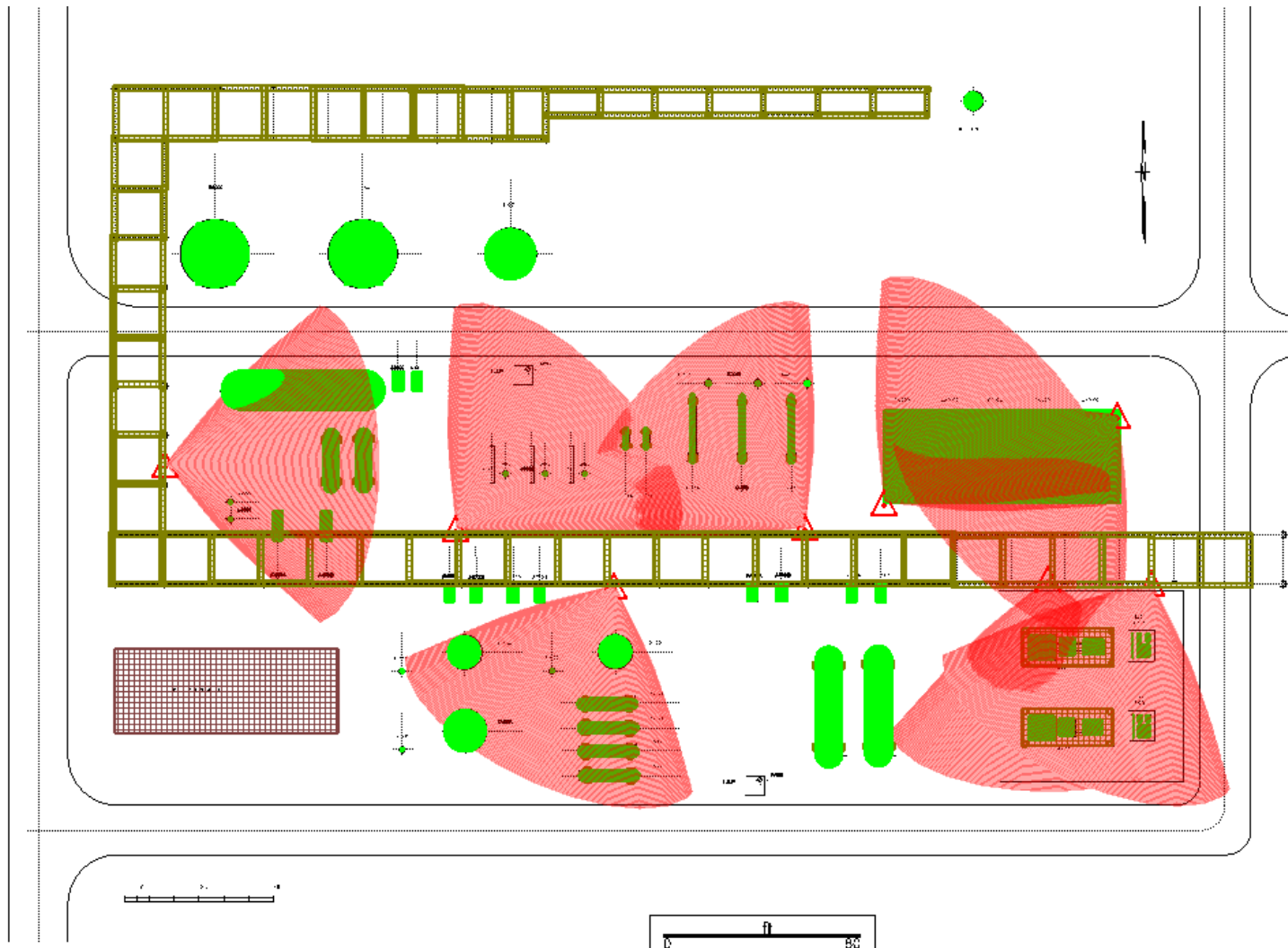




Example Toxic Gas Detection

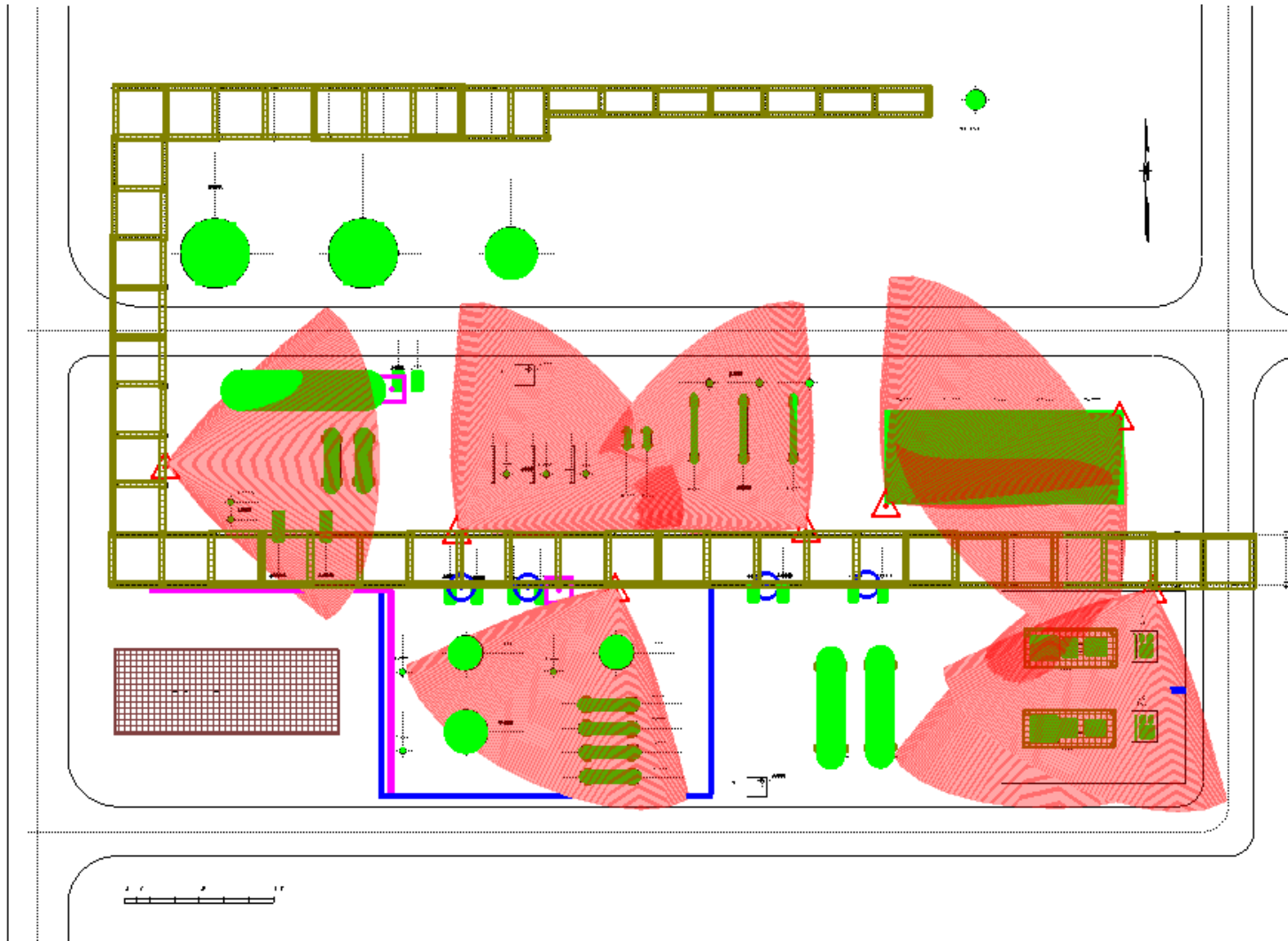


Example Fire Detection



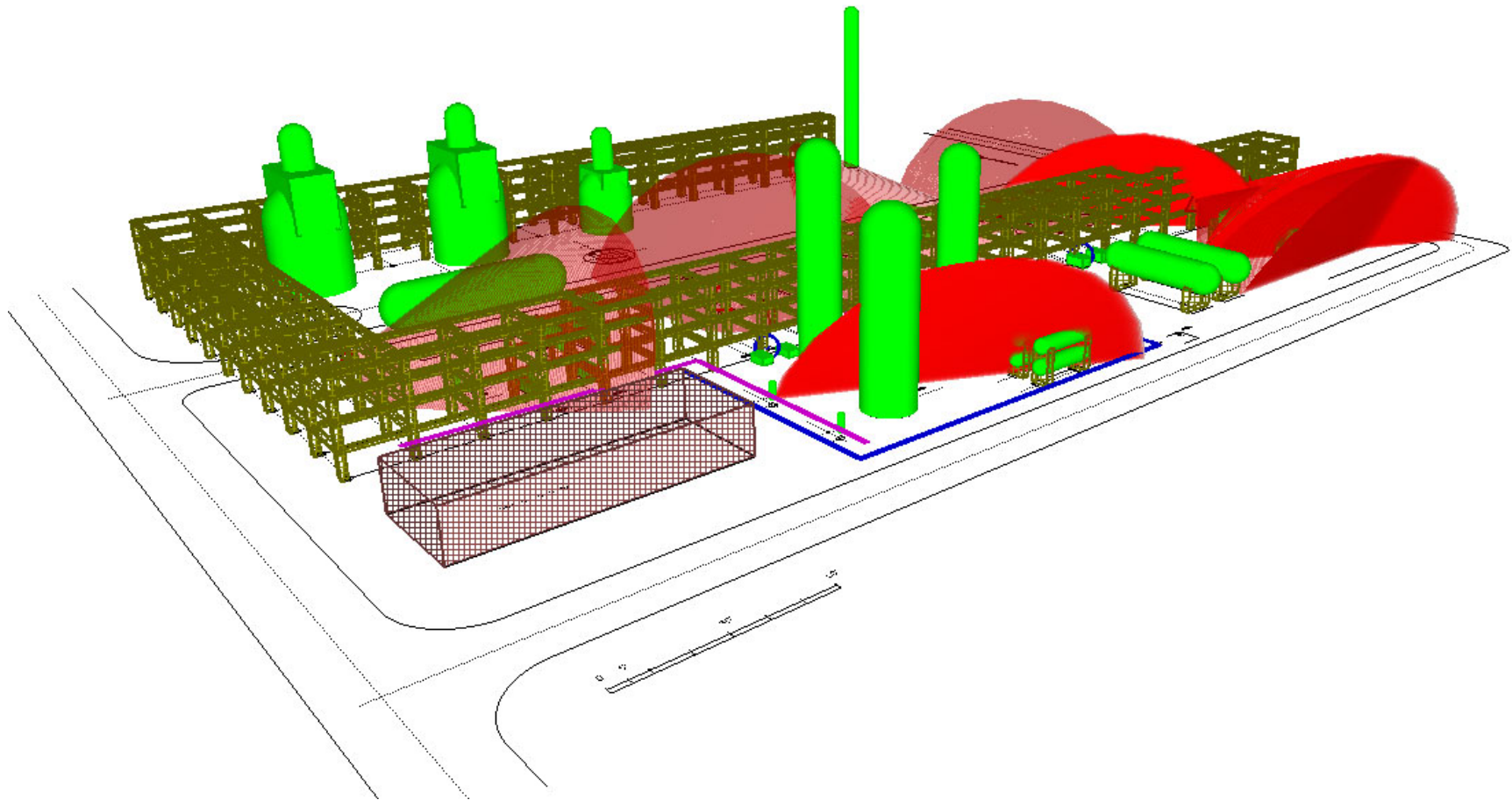


Completed Model – 2D





Completed Model – 3D

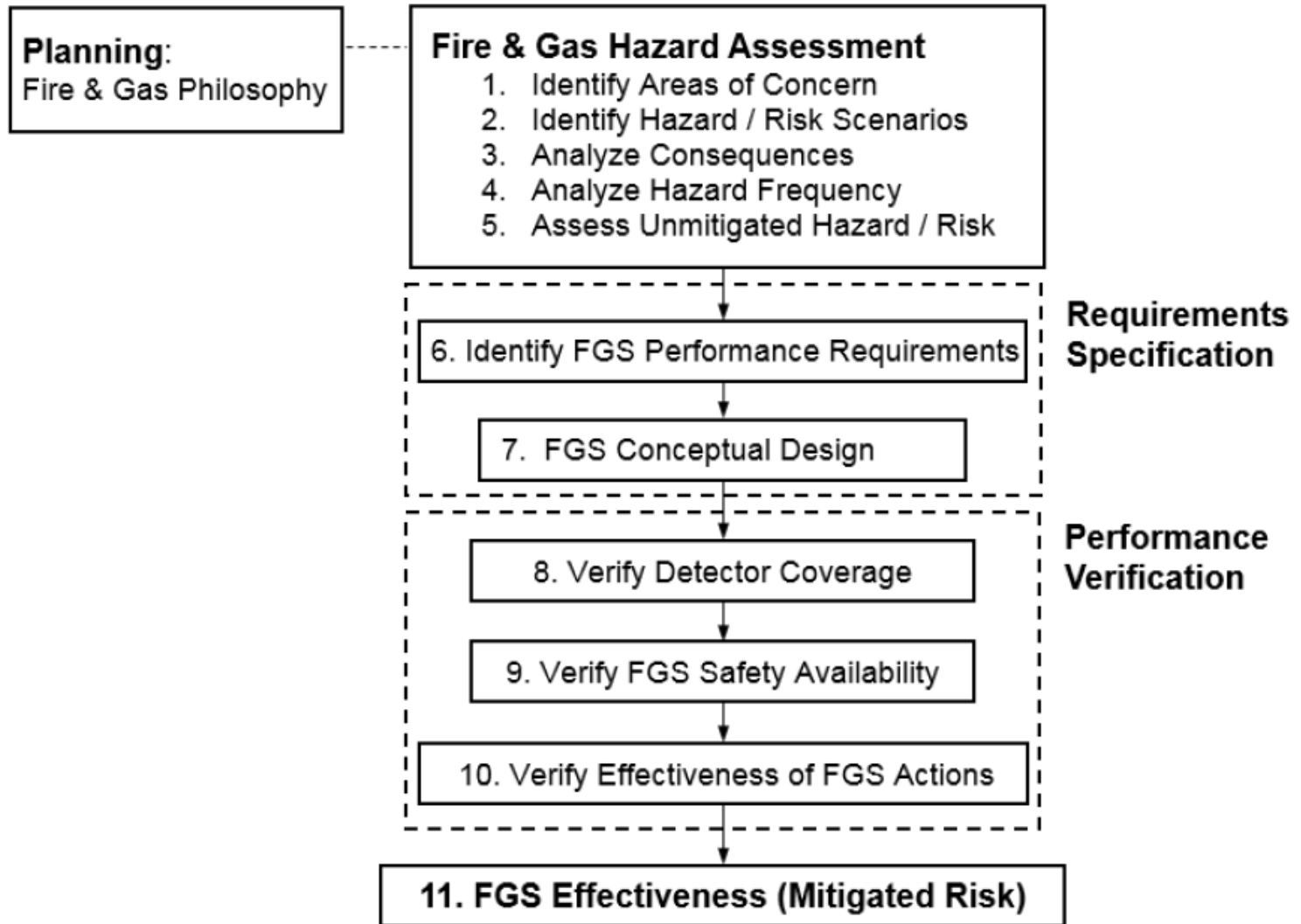




Comparison of FGS and SIS Life Cycles

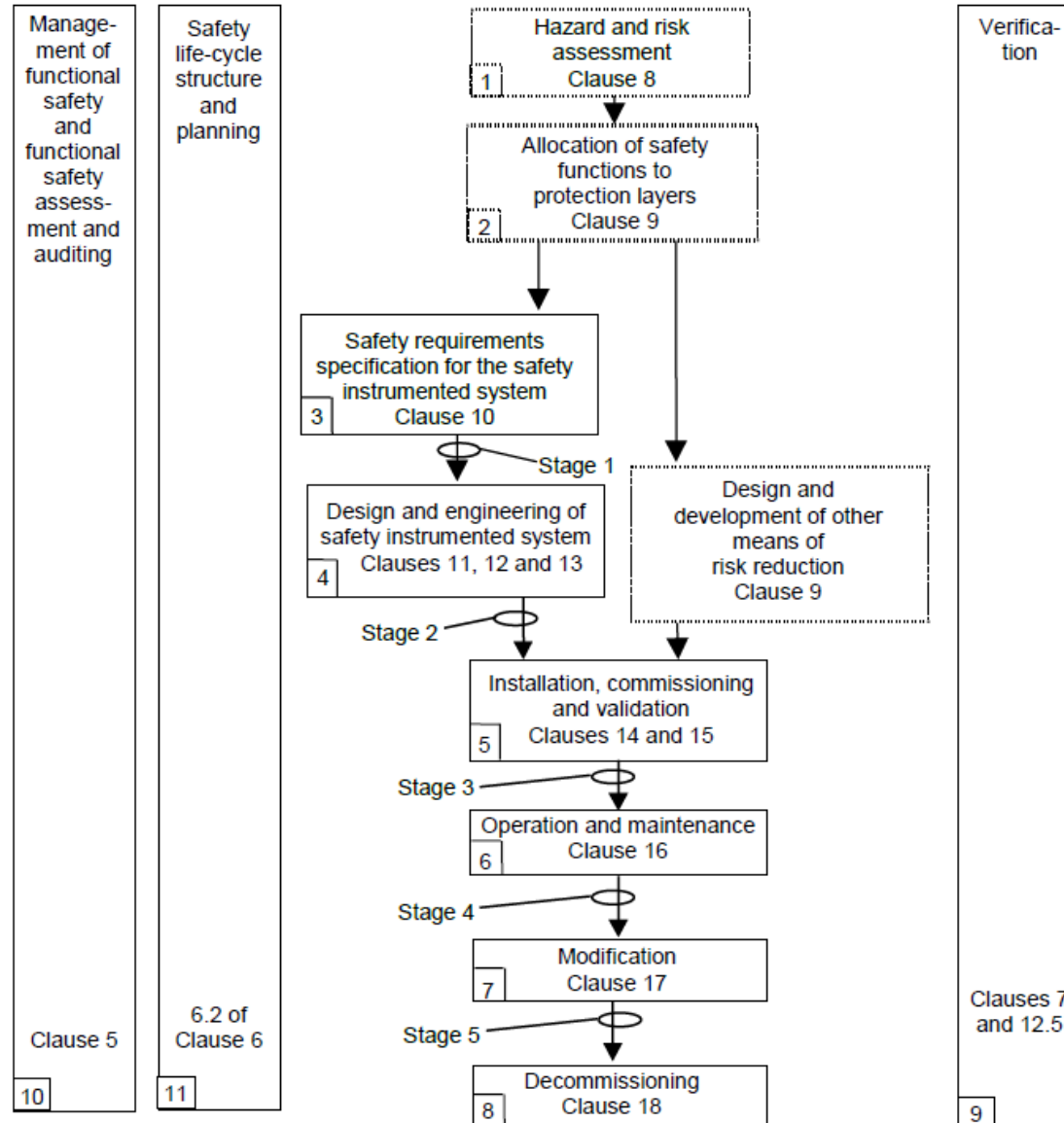


FGS Life Cycle





SIS Life Cycle





blog.lesman.com



www.linkedin.com/company/lesman-instrument-company



[@Lesman_Inst](https://twitter.com/Lesman_Inst)



www.youtube.com/user/LesmanInstrumentCo